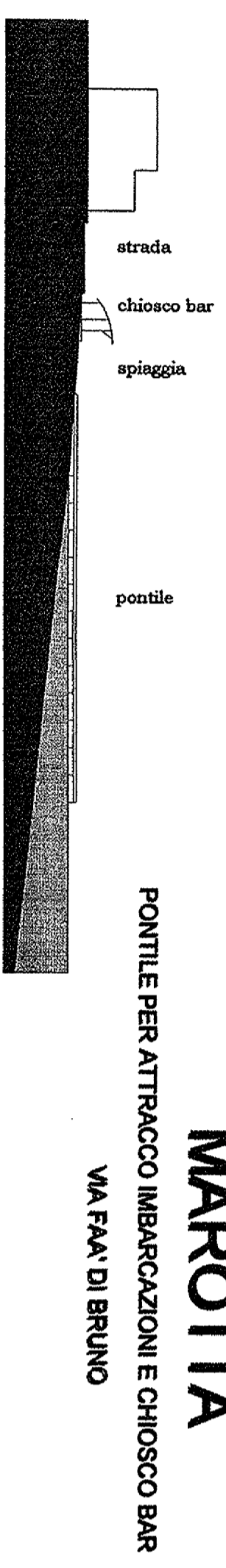


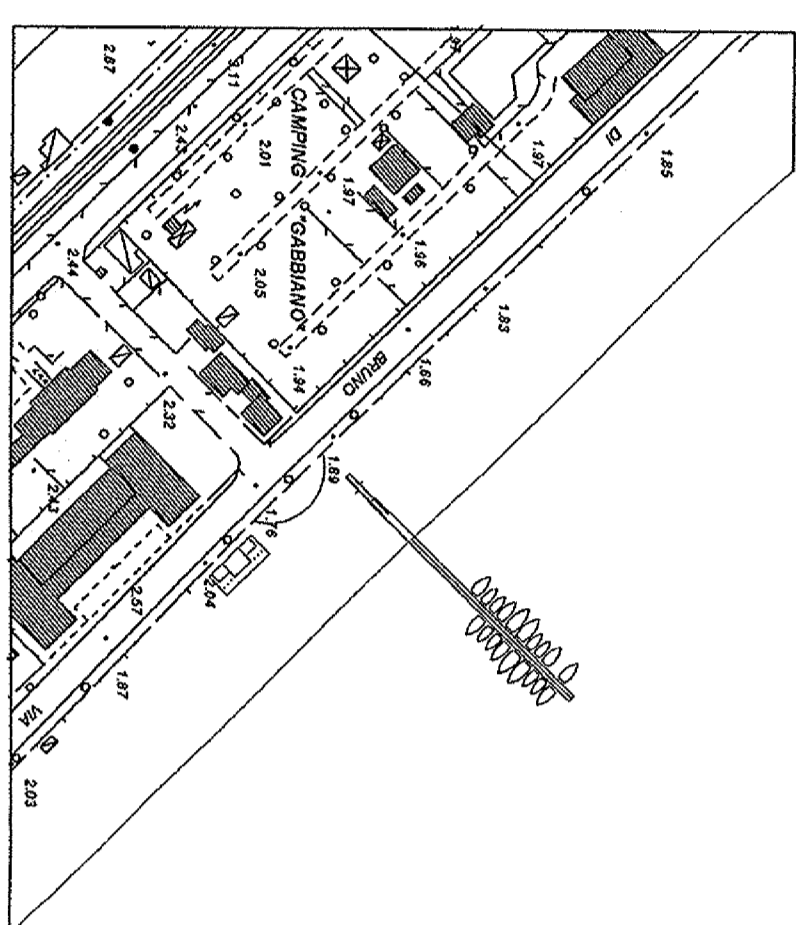


Oggetto	TAV
INTERVENTI DI RIQUALIFICAZIONE	5.1
Data	Scala
NOVEMBRE 2010	



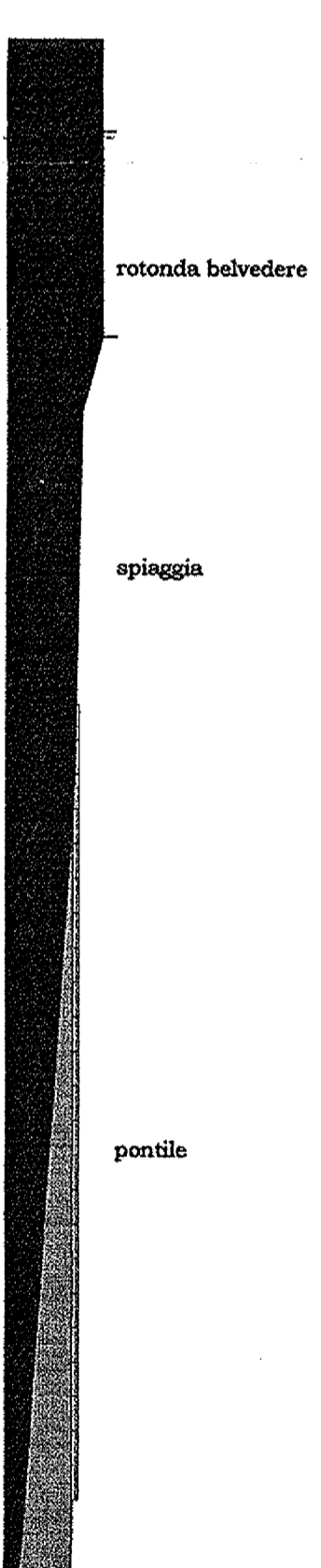
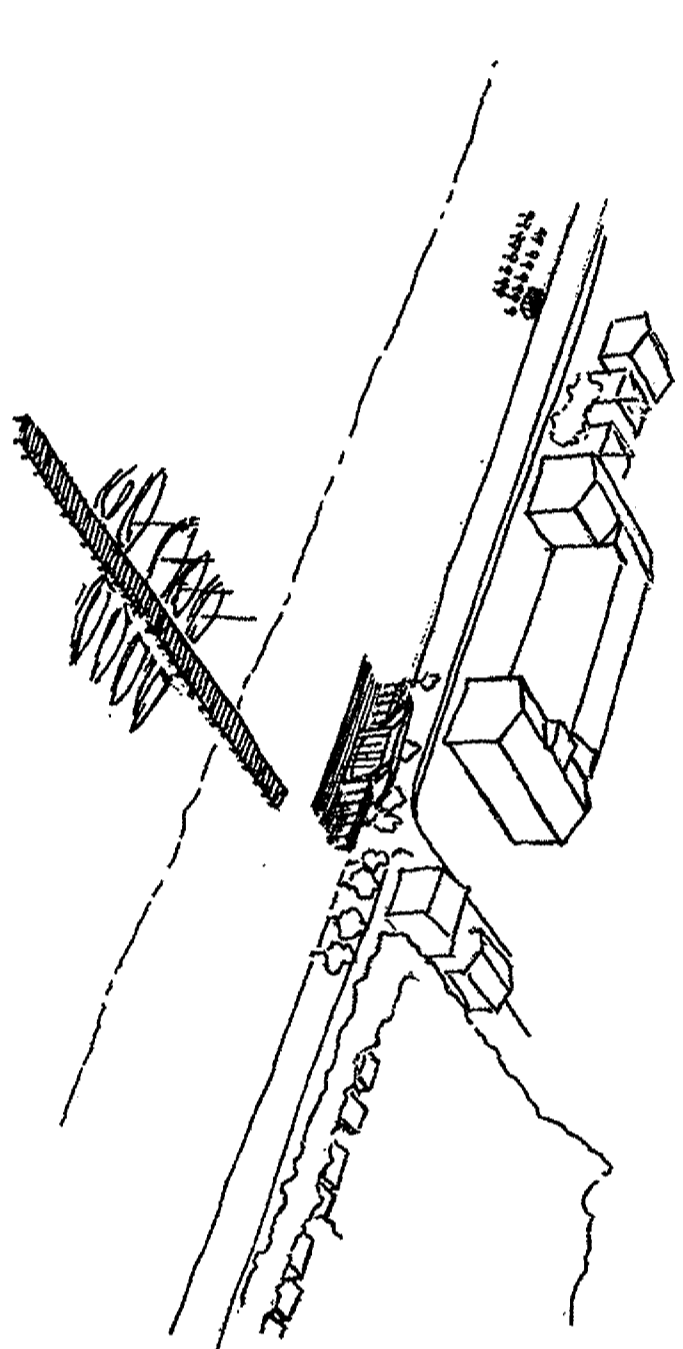
MAROTTA

PONTILE PER ATTRACCO IMBARCAZIONI E CHIOSCO BAR
VIA FAN' DI BRUNO



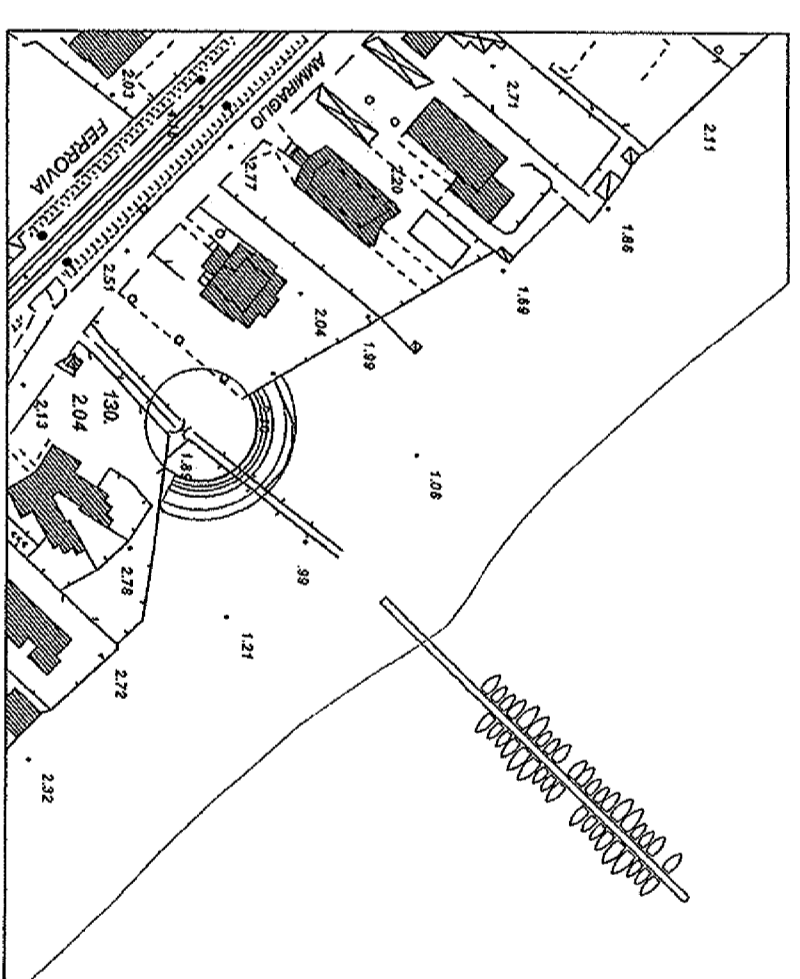
Planimetria scala 1:2.000

Profilo scala 1:1.000



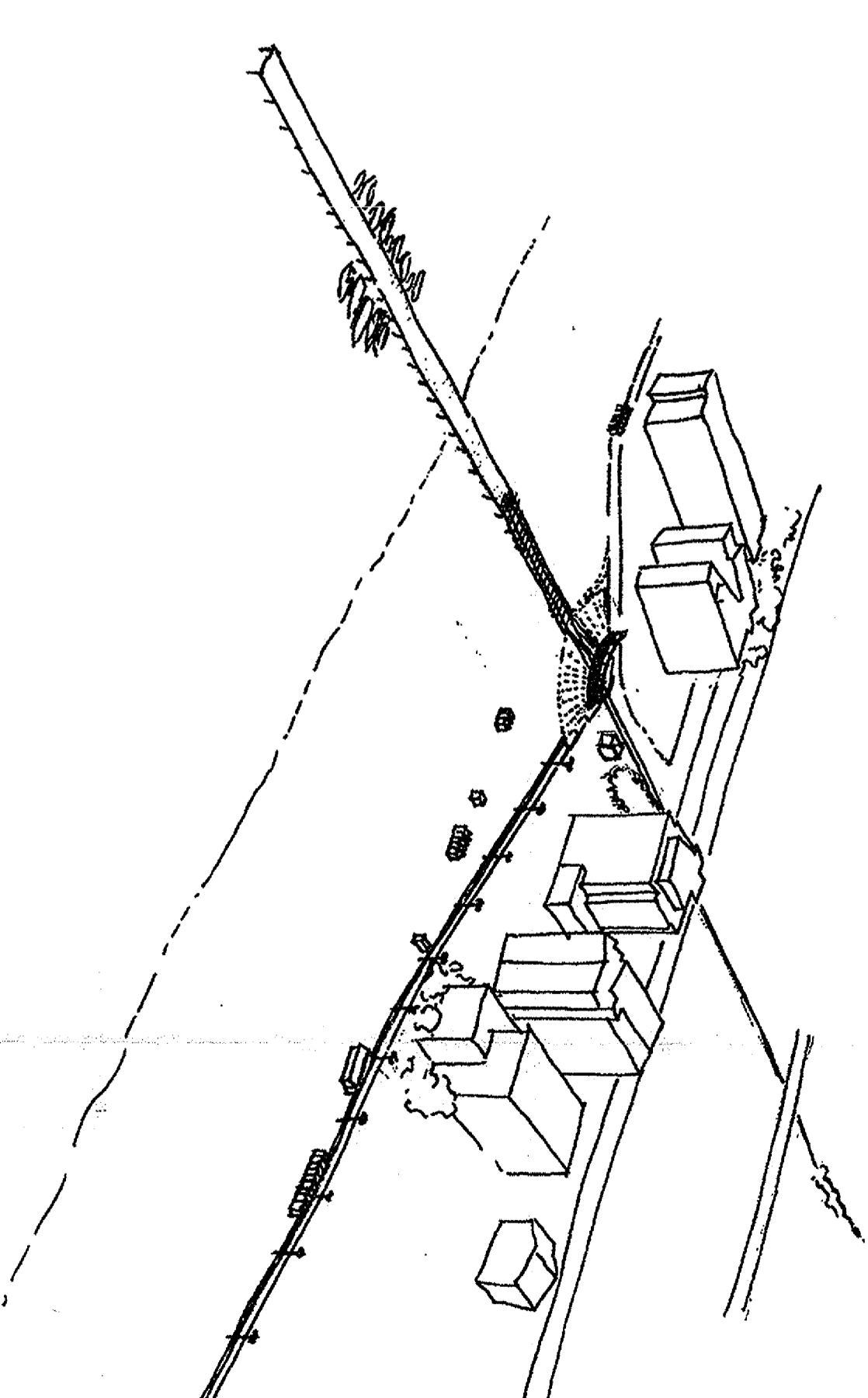
PONTE SASSO

ROTONDA BELVEDERE E PONTILE PER ATTRACCO IMBARCAZIONI
RIO CRIVACCO



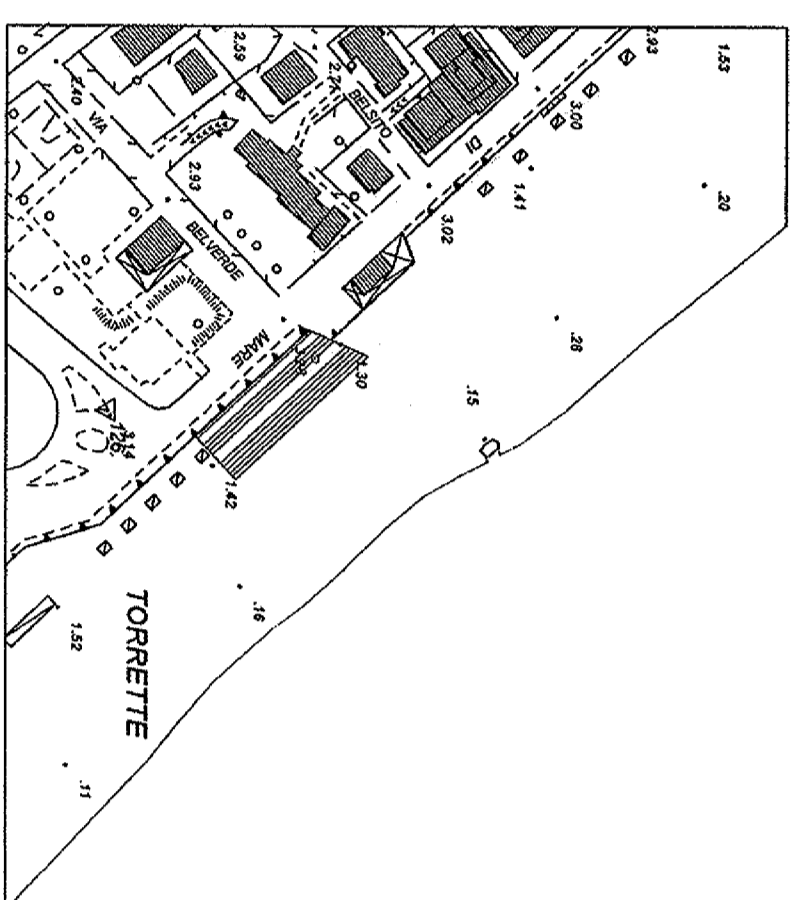
Planimetria scala 1:2.000

Profilo scala 1:1.000



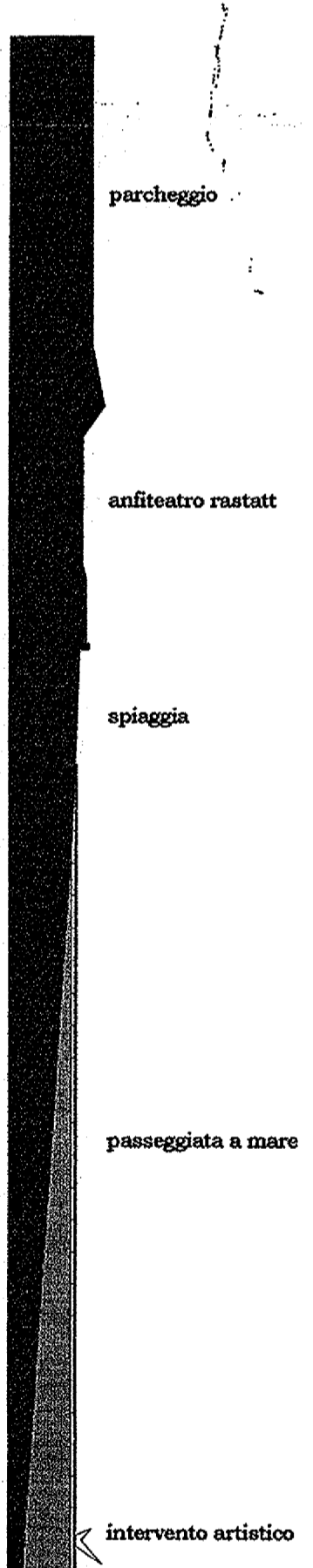
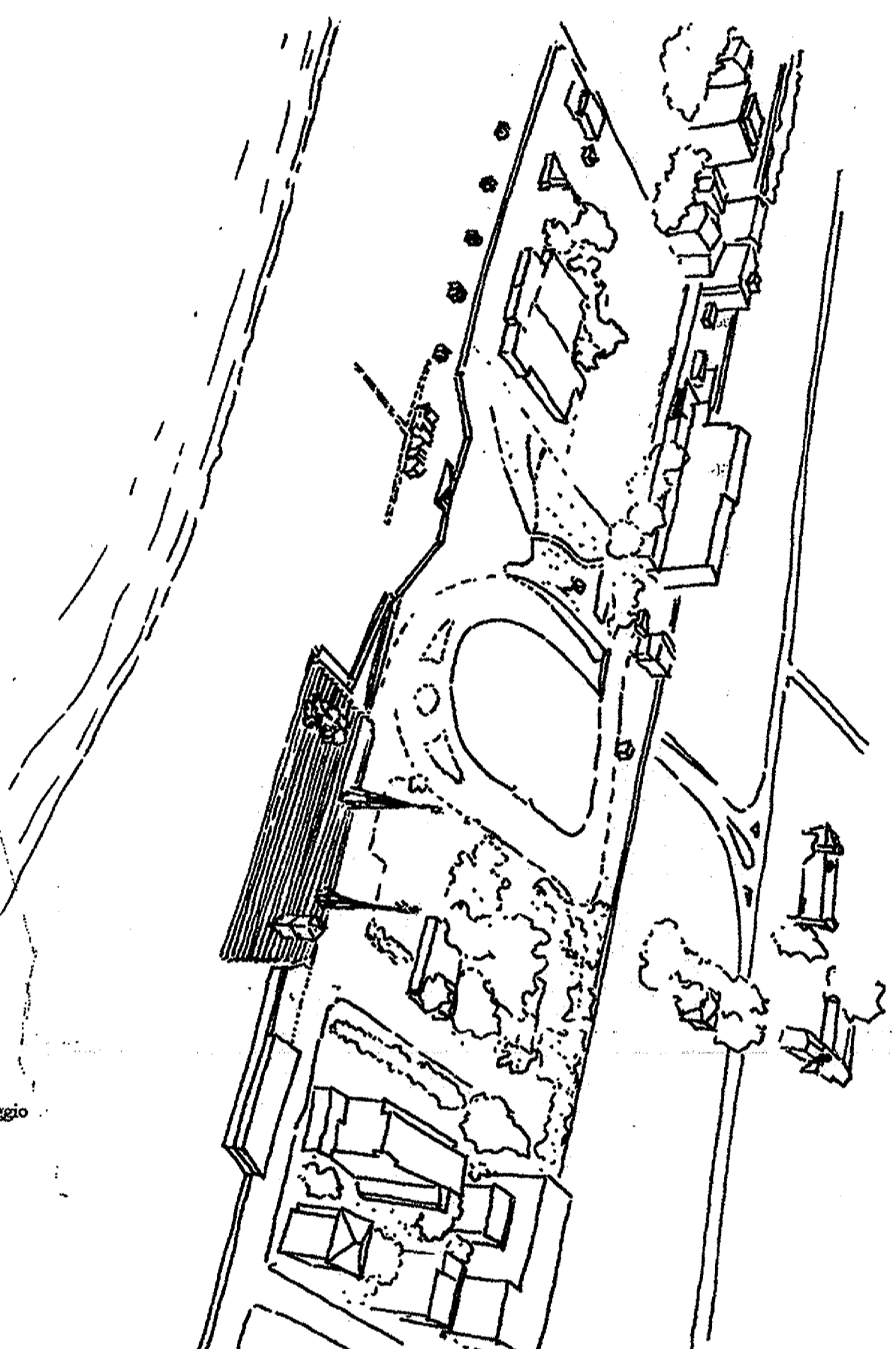
TORRETTE

SCALINATA A MARE



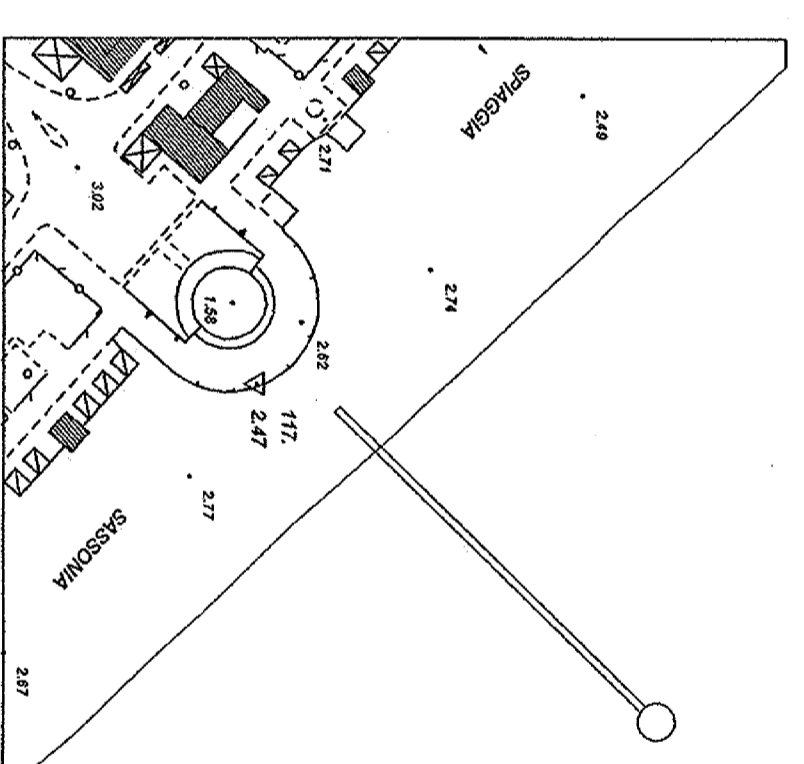
Planimetria scala 1:2.000

Profilo scala 1:1.000

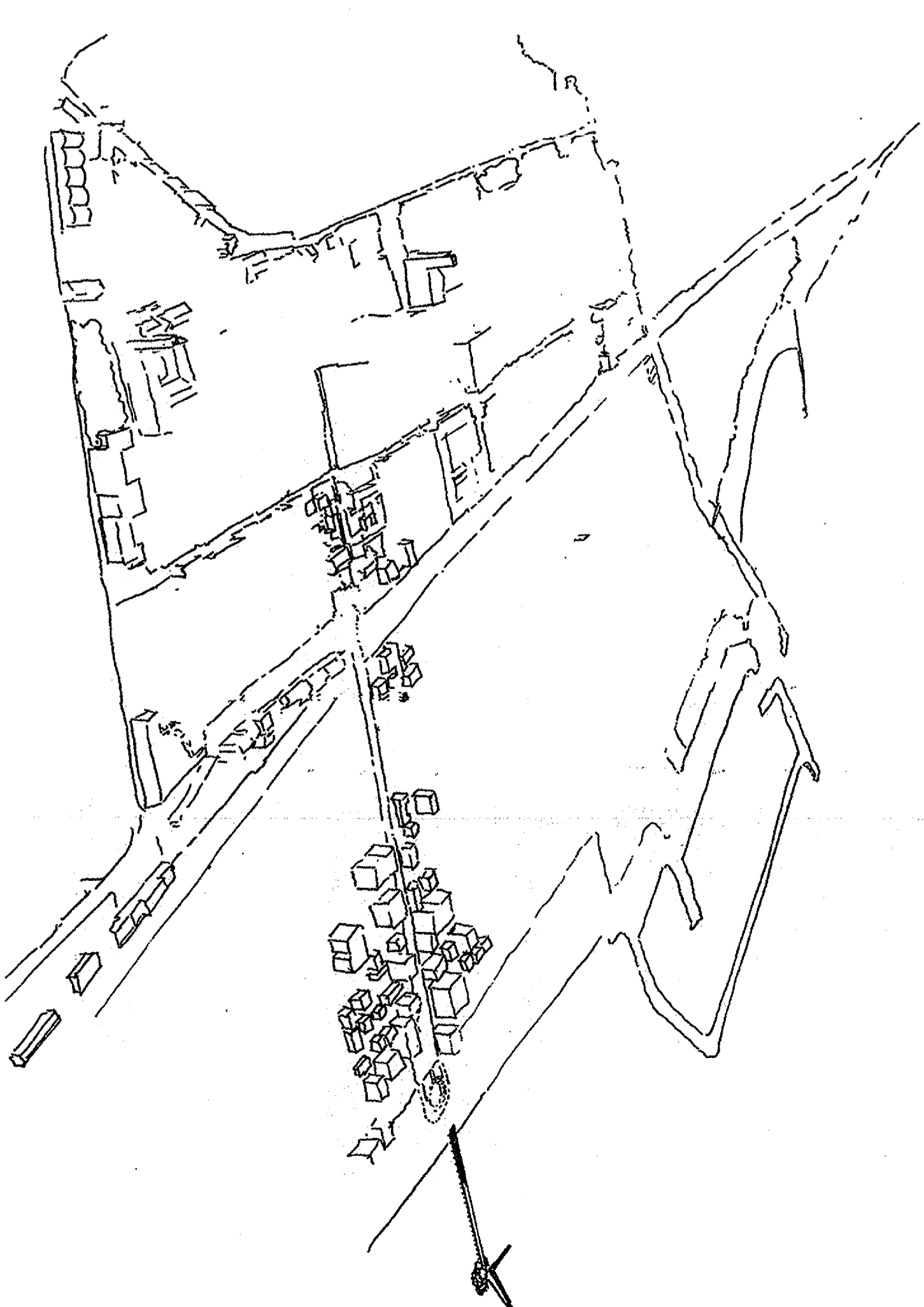


SASSONIA

PASSEGGIATA E "SENNO" A MARE

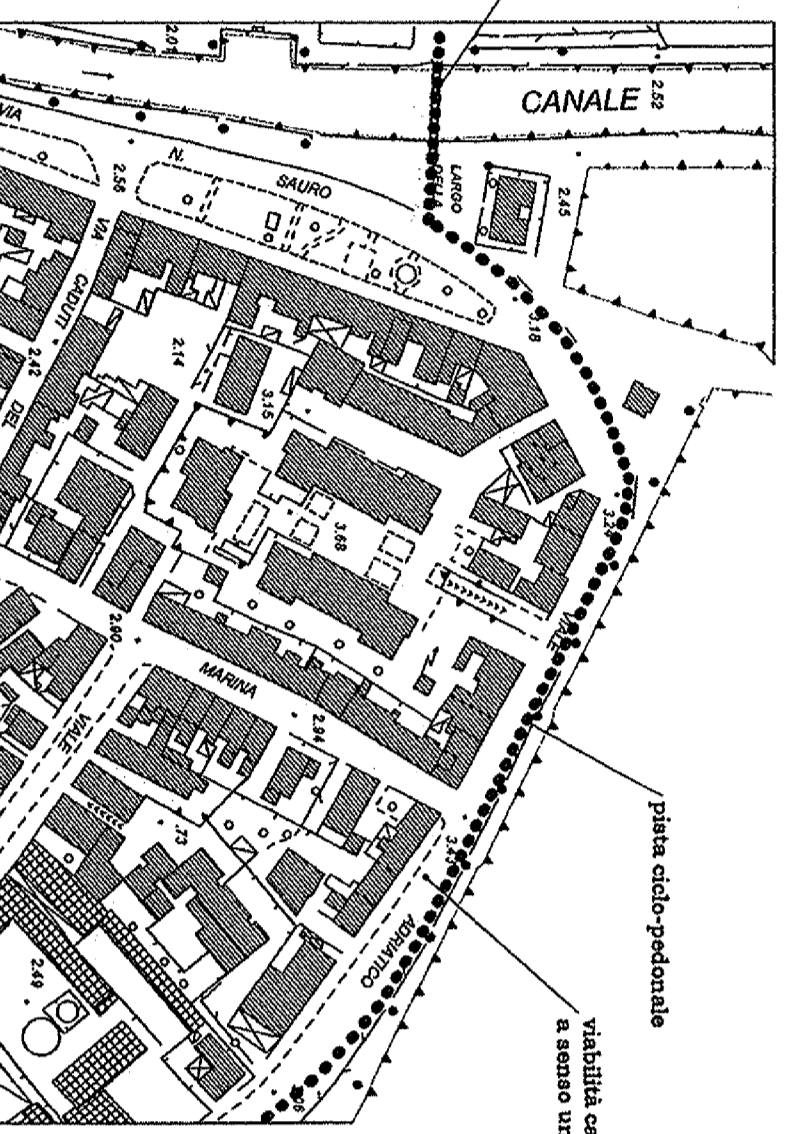


Profilo scala 1:1.000

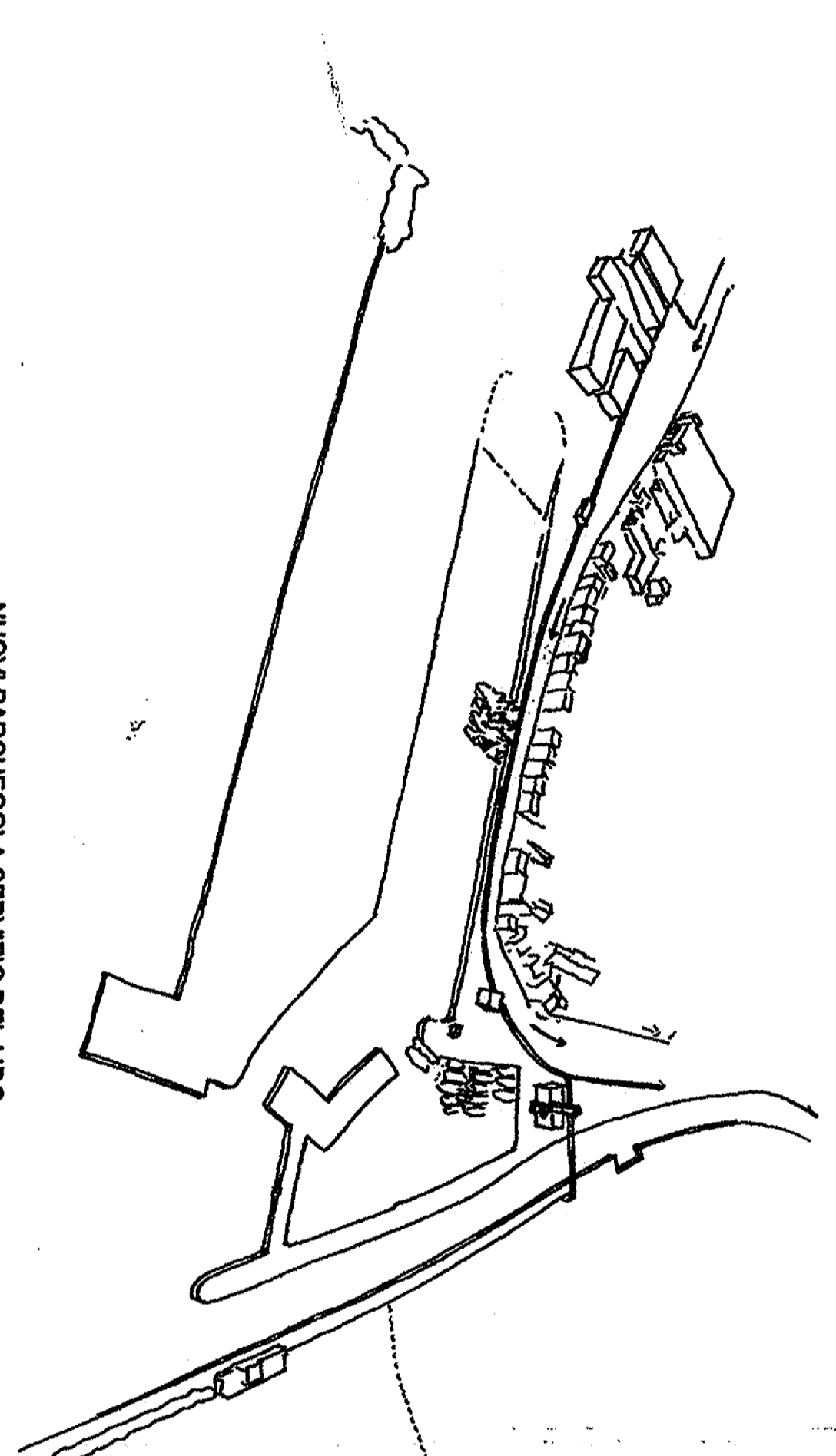


SASSONIA-LIDO

COLLEGAMENTO CICLO-PEDONALE

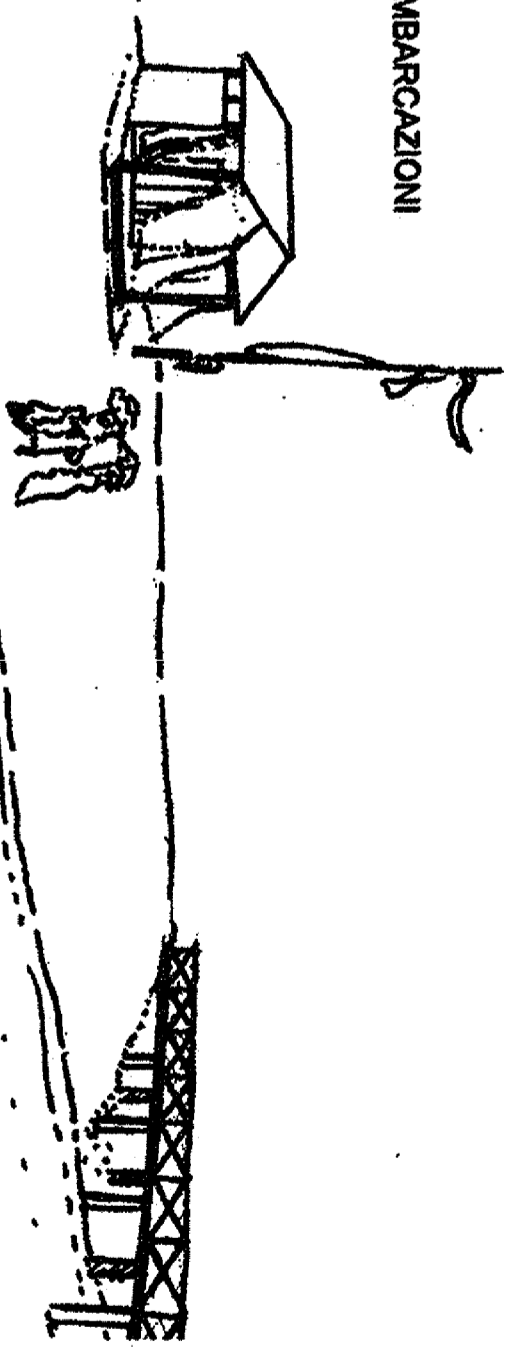


Planimetria scala 1:2.000



Planimetria scala 1:2.000

CAPANNI TIPO PARCHEGGIO IMBARCAZIONI



TORRETTE-PONTE SASSO

COLLEGAMENTO CICLO-PEDONALE



Planimetria scala 1:5.000

PISTA CICLO-PEDONALE
VISTA TIPO

