



Chità di Fano  
(Provincia di Pesaro e Urbino)



PROGETTAZIONE URBANISTICA  
ED ARCHITETTONICA



Dot. Arch. Filippo Andreoli

PROGETTAZIONE OPERE STRUTTURALI

Dot. Ing. Fabio Tomasi

L. DI URBANIZZAZIONE

Dot. Ing. Stefano Anselmi

PROGETTAZIONE UMANITÀ

POLITECNOS soc. coop.

TECNOLOGICI

POLITECNOS soc. coop.

PROGETTAZIONE AREE VERDE

AGRIANTE

INDICINE GEOLOGICHE

GEOSON

Comune di FANO

TAV.  
URB.05

PROGETTO PER LA REALIZZAZIONE DI DUE EDIFICI COMMERCIALI  
IN ATTUAZIONE DEL COMPARTO ST3\_P09 DI VIALE PICENO

PROPRITÀ: Madonna Ponte s.r.l. - BR Holding s.r.l.

PLANVOLUMETRICO:  
OPERE DI URBANIZZAZIONE:

SCHEMI TIPOLOGICI

DATA: Giugno 2012

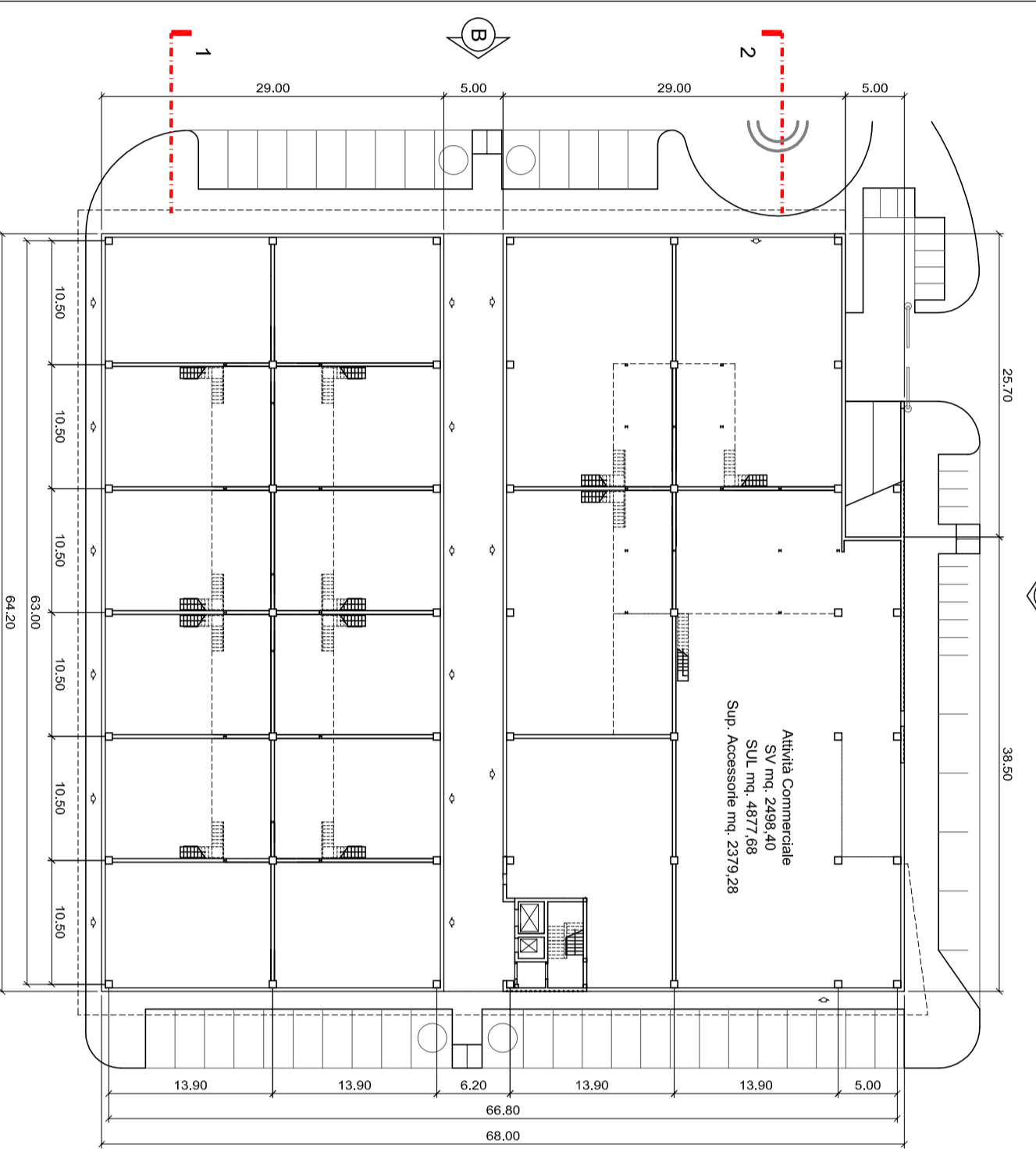
AGG. Gennaio 2013

AGG.

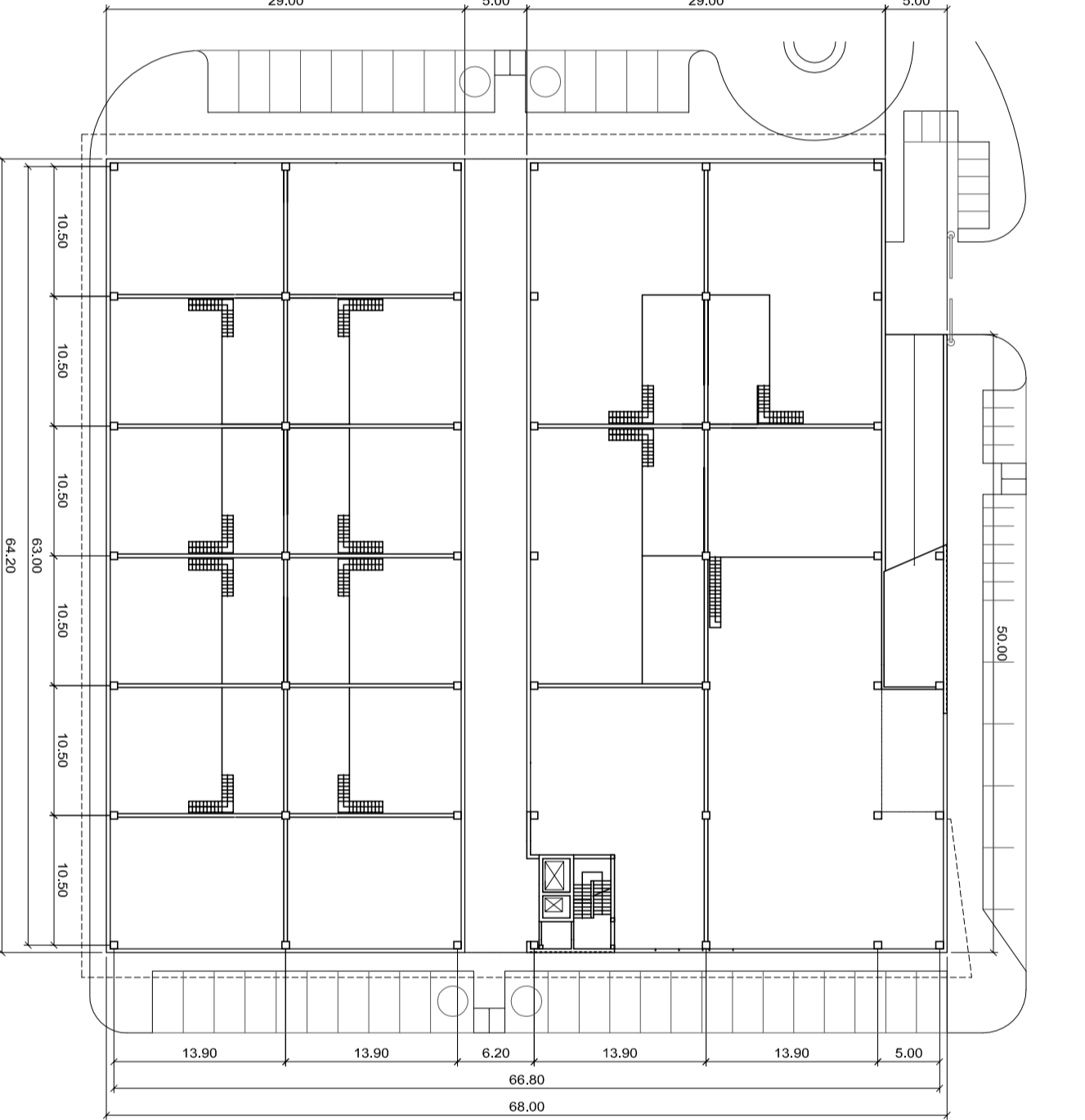
SCALA: 1:500

### EDIFICIO A

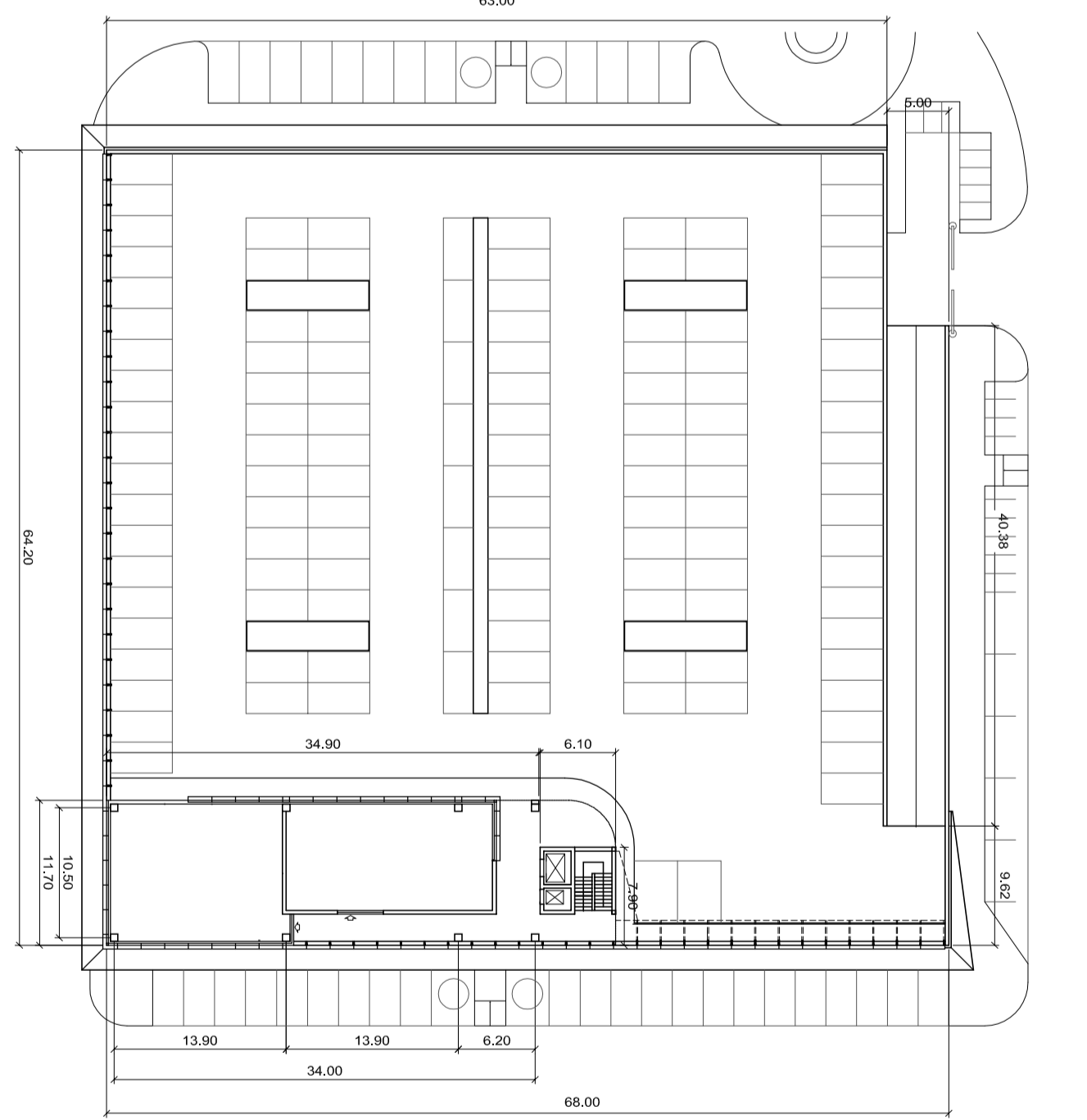
PANITA PIANO TERZA



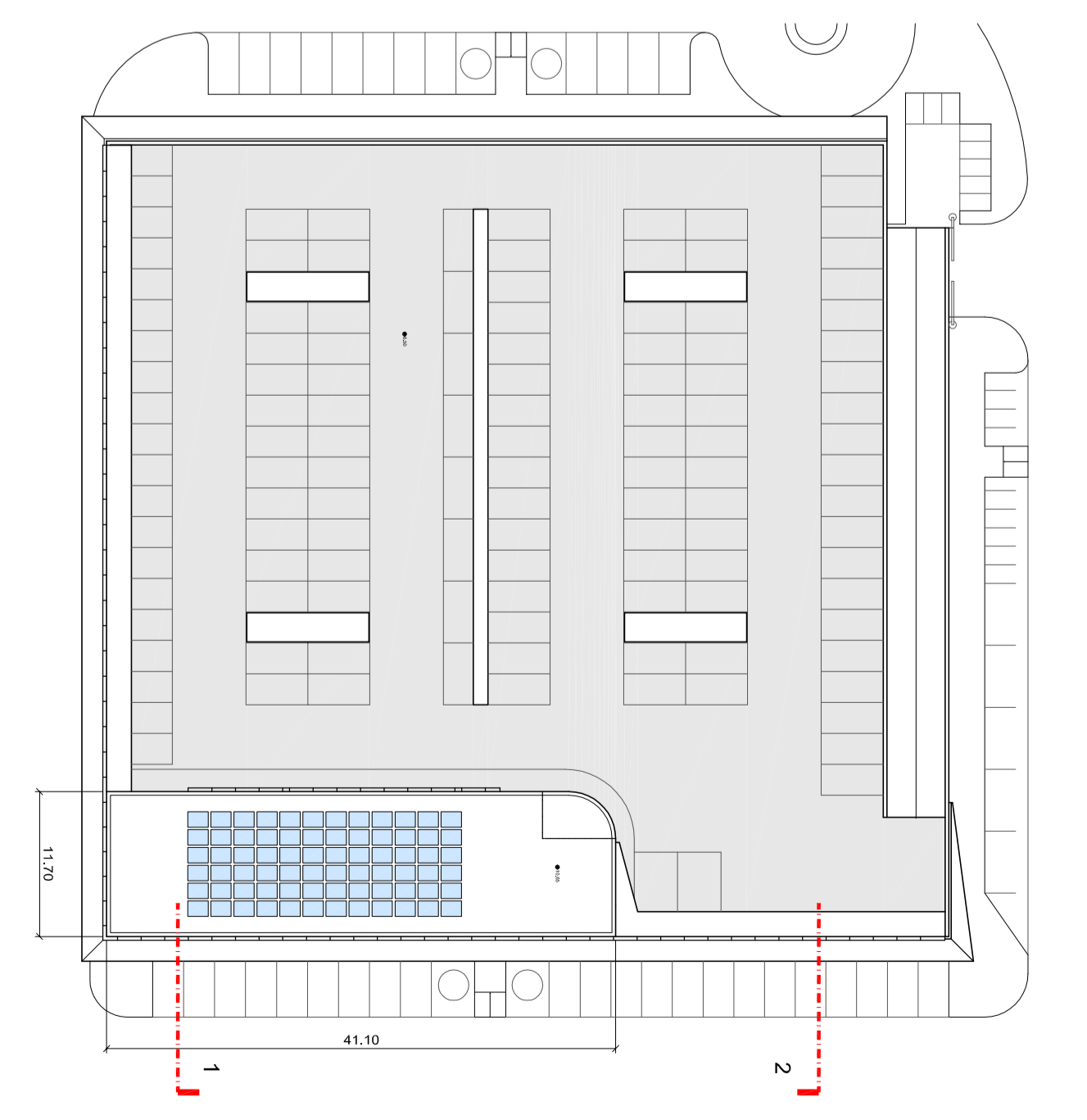
PANITA PIANO SOPRALCO



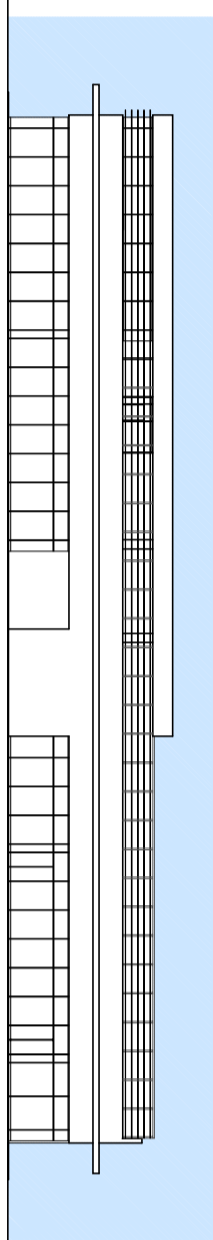
PANITA PIANO PRIMO



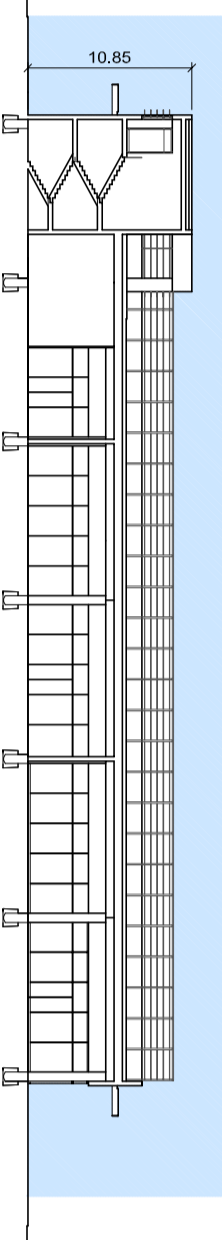
PANITA COPERTURA



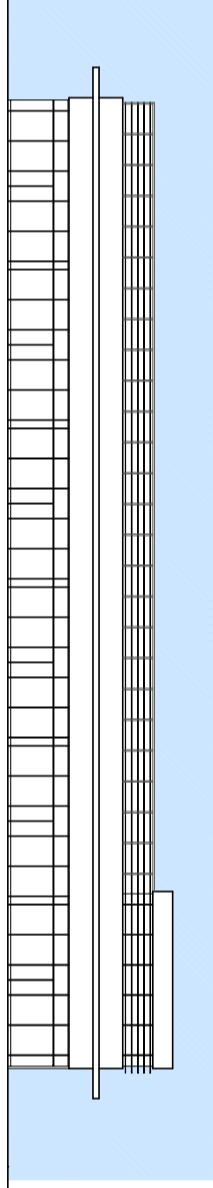
PROSPETTO 'D'



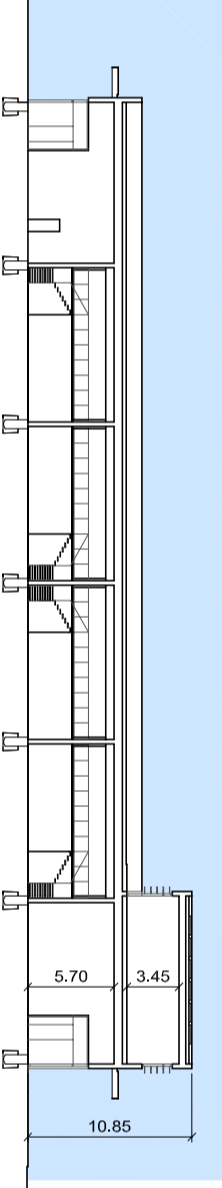
SEZIONE 2



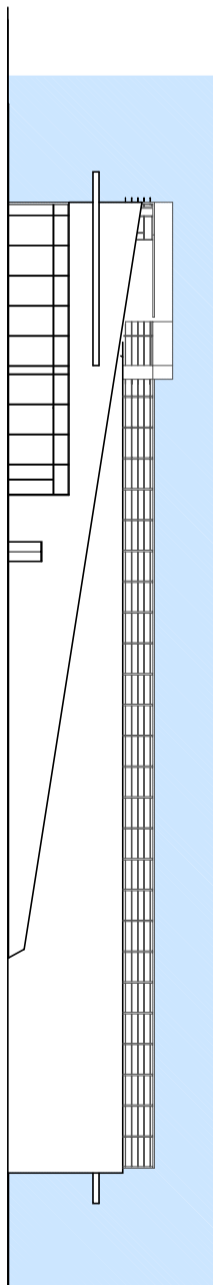
PROSPETTO 'A'



SEZIONE 1



PROSPETTO 'C'

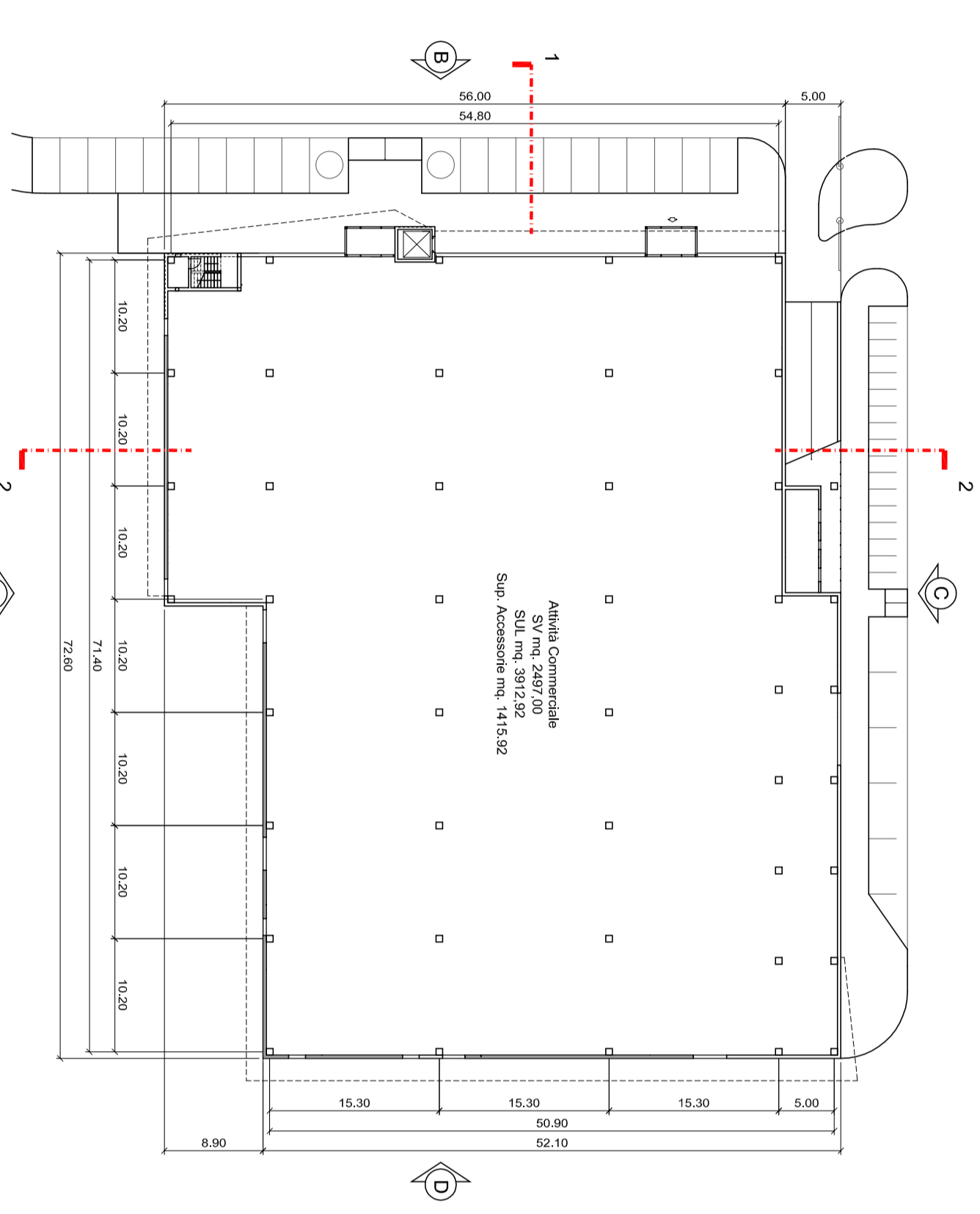


PROSPETTO 'B'

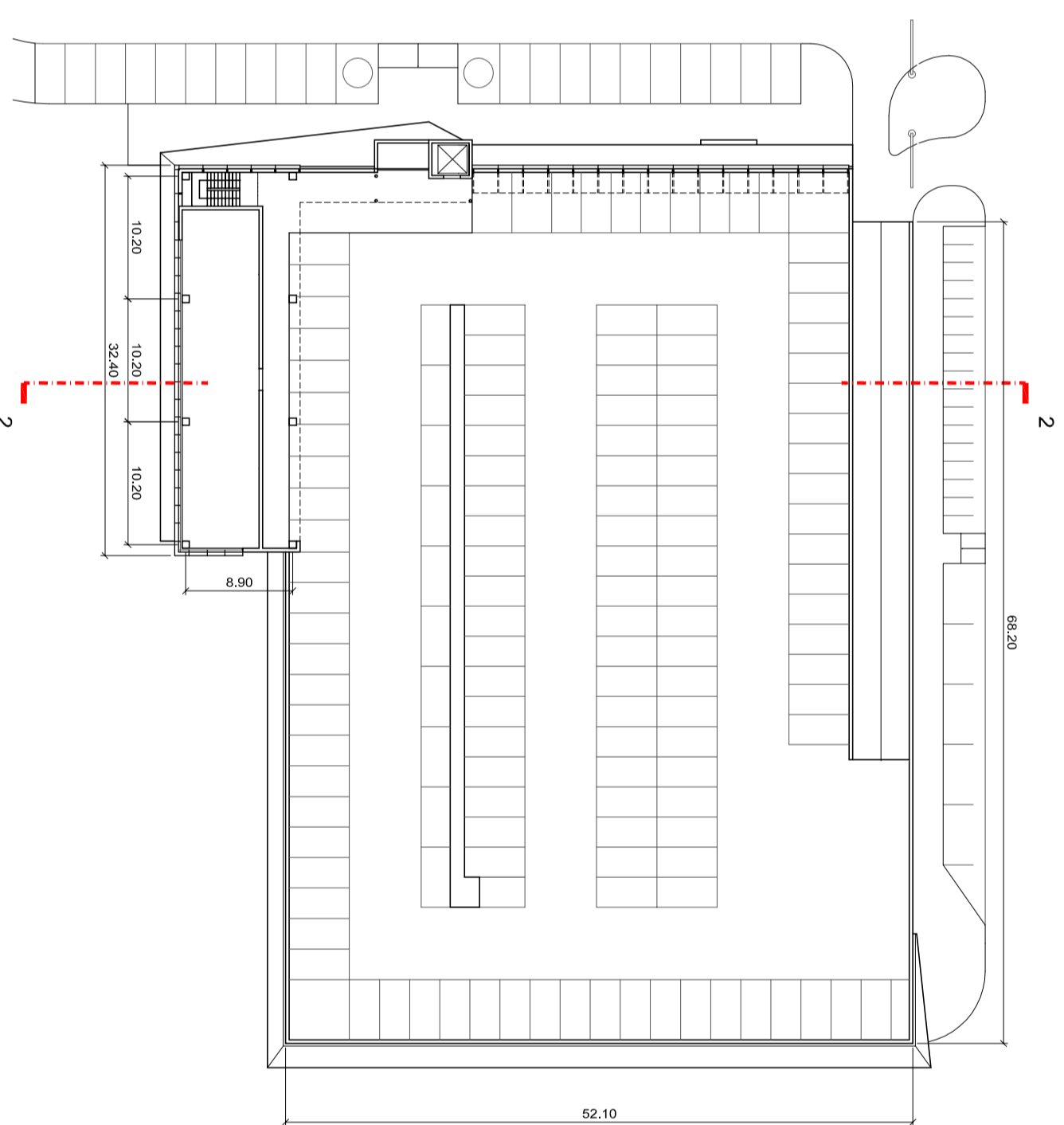


### EDIFICIO B

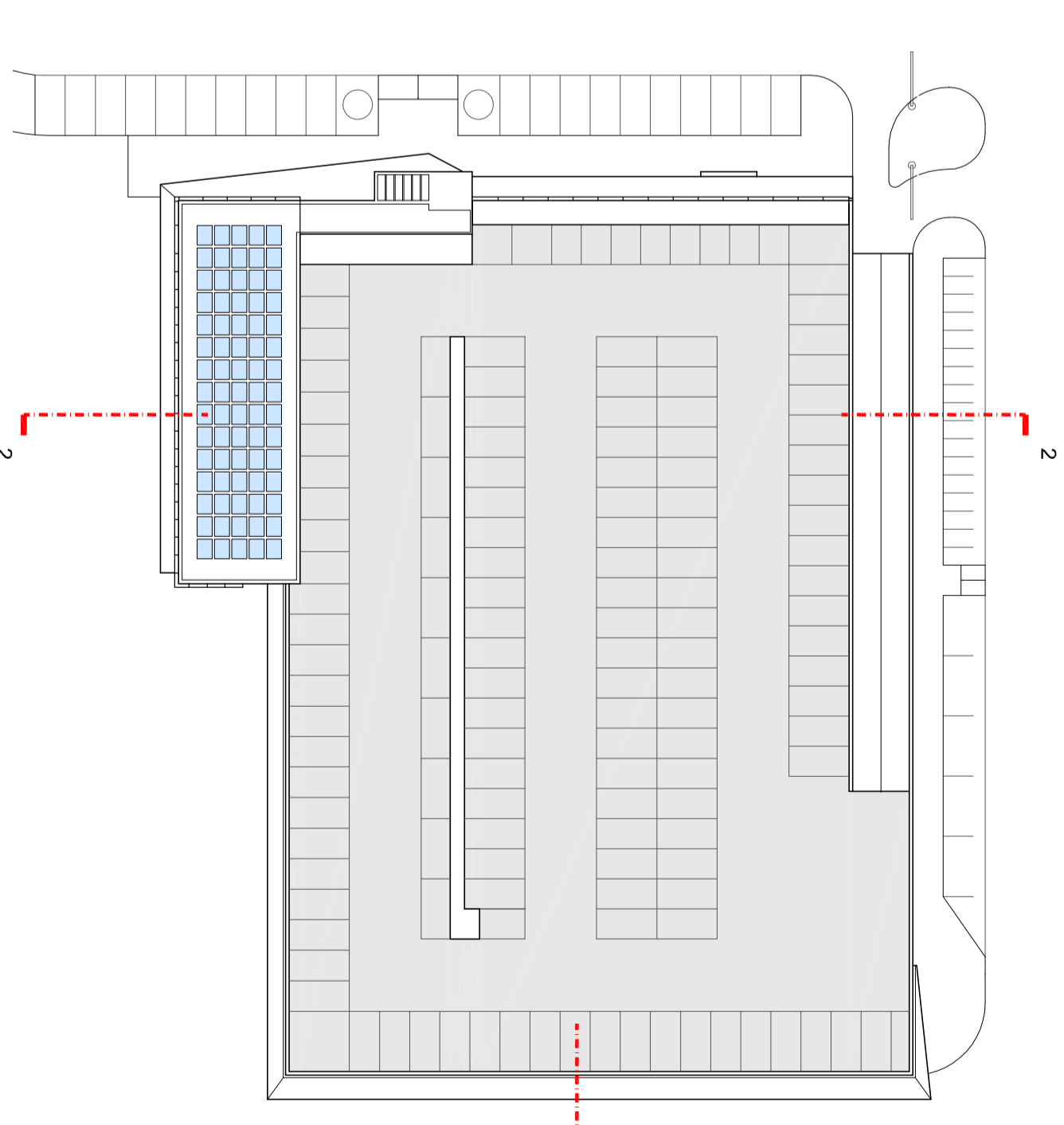
PANITA PIANO TERZA



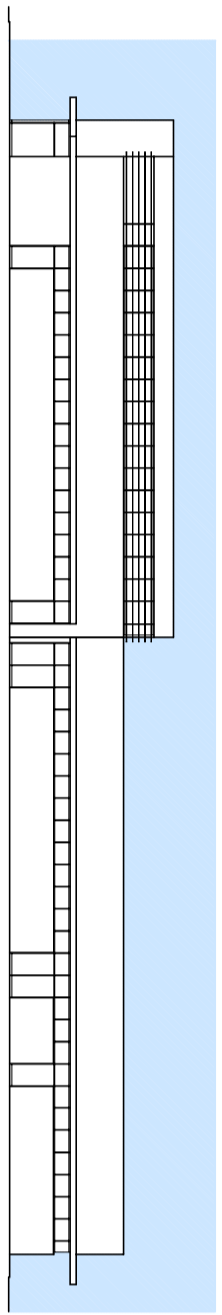
PANITA PIANO PRIMO



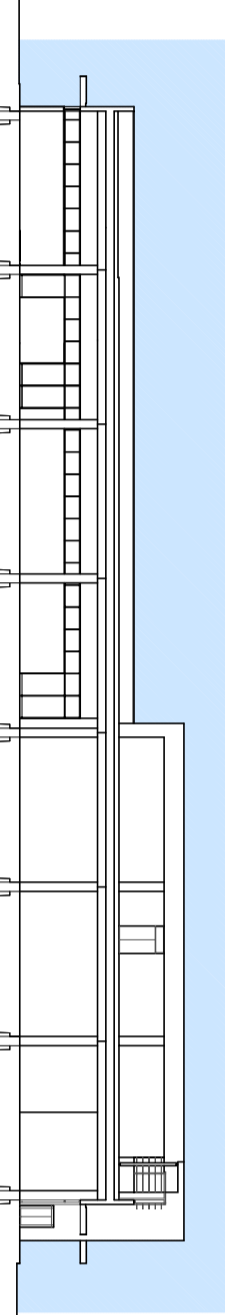
PANITA COPERTURA



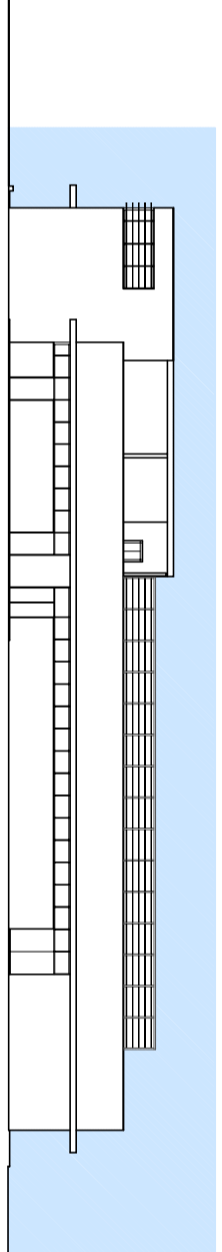
PROSPETTO 'X'



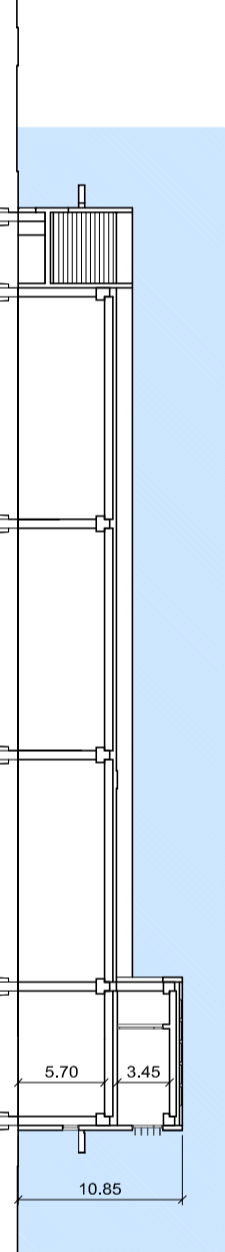
SEZIONE 'Z'



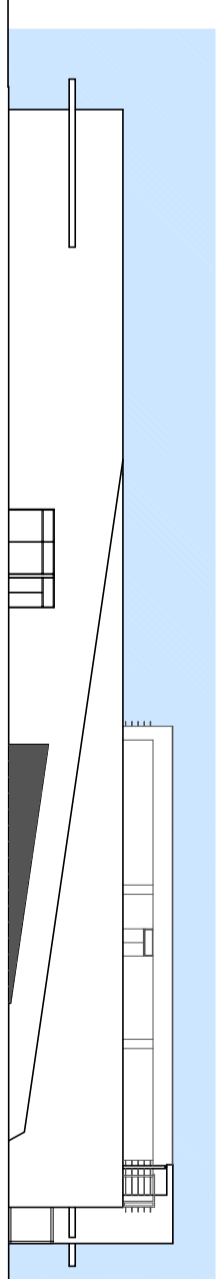
PROSPETTO 'D'



SEZIONE 'Y'



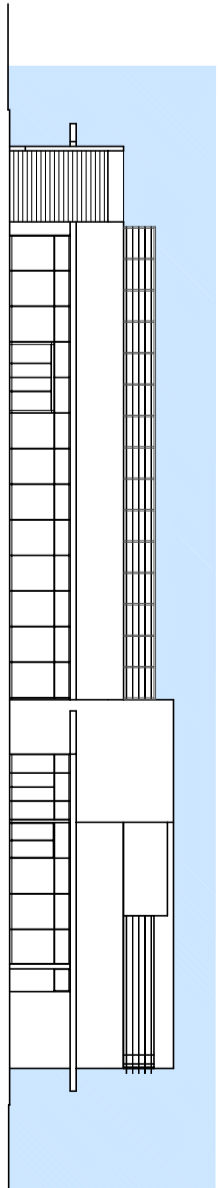
PROSPETTO 'C'



PROSPETTO 'B'

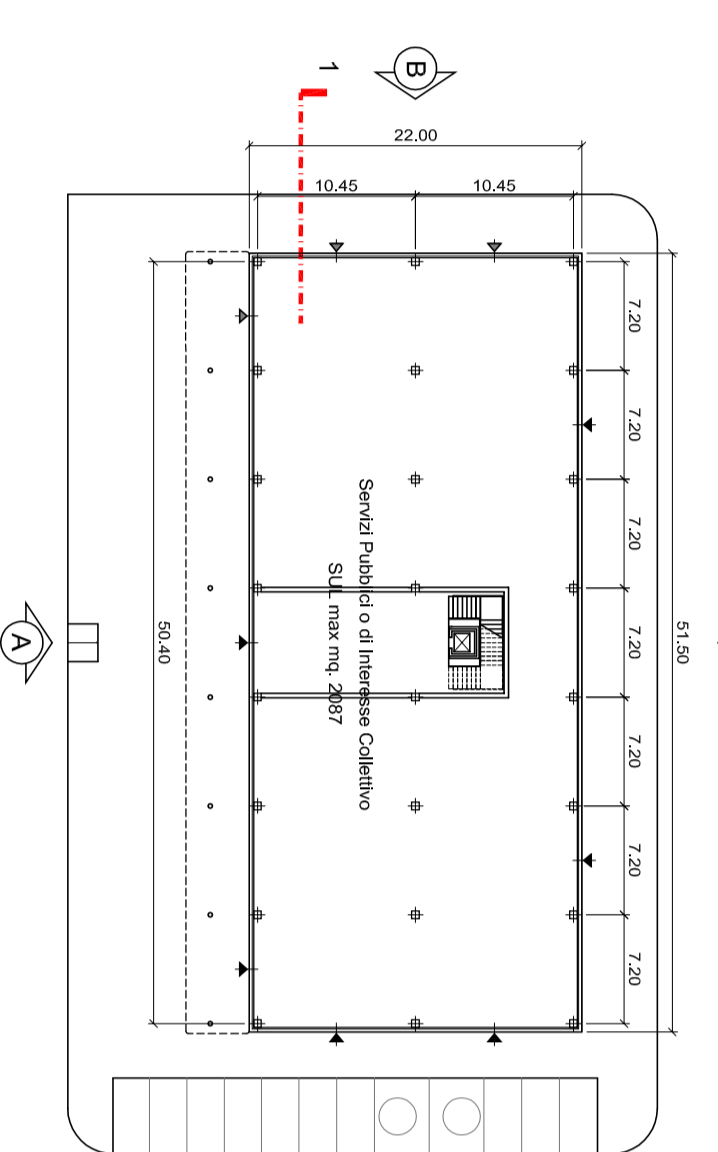


PROSPETTO 'B'

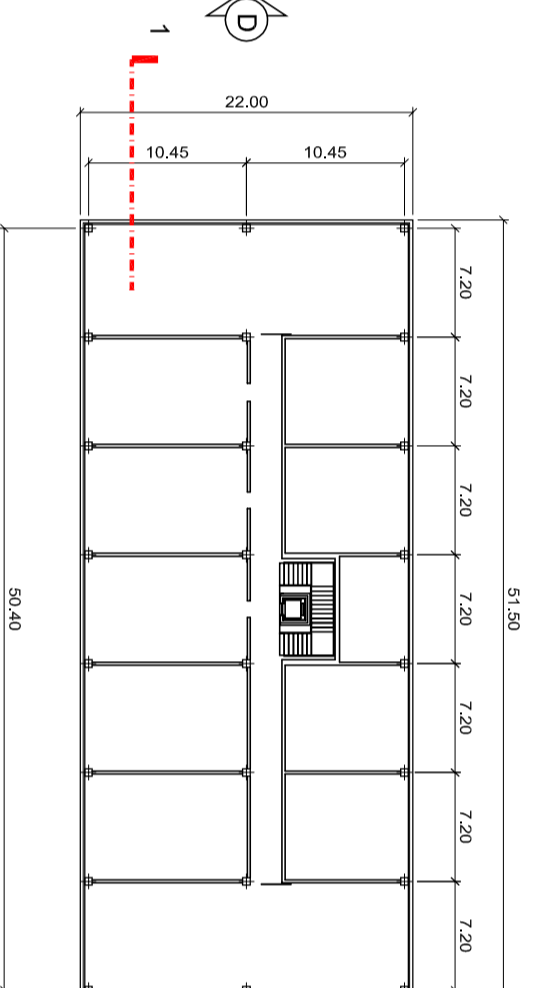


### EDIFICIO C

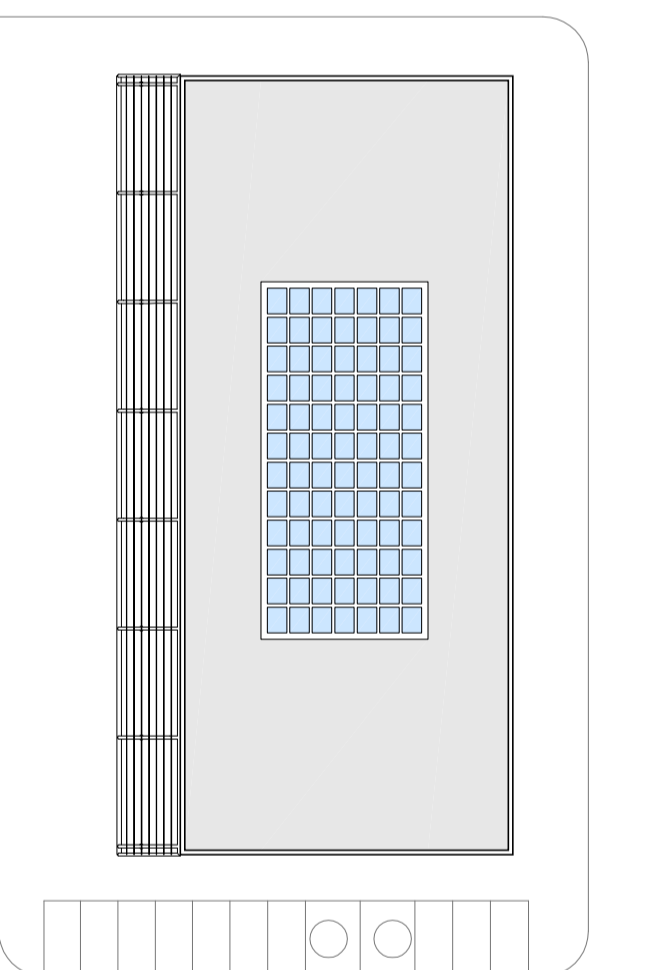
PANITA PIANO TERZA



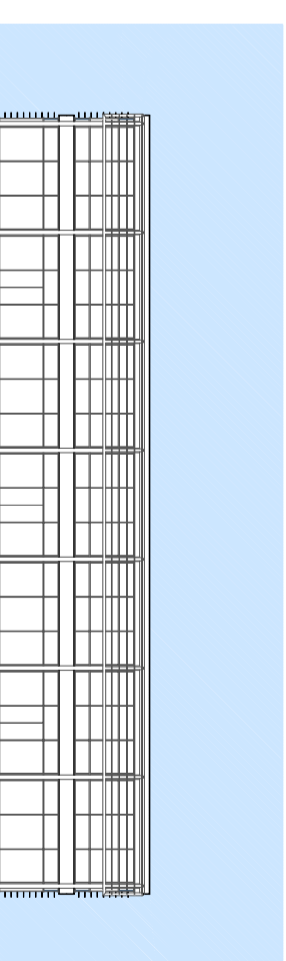
PANITA PIANO PRIMO



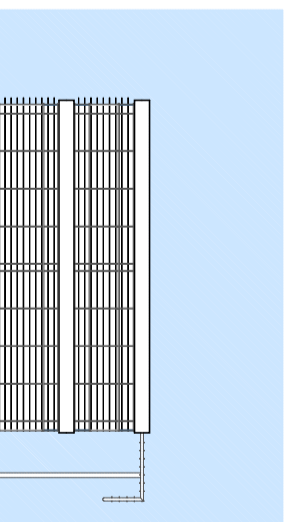
PANITA COPERTURA



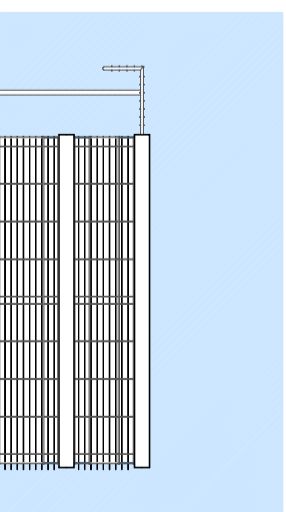
PROSPETTO 'A'



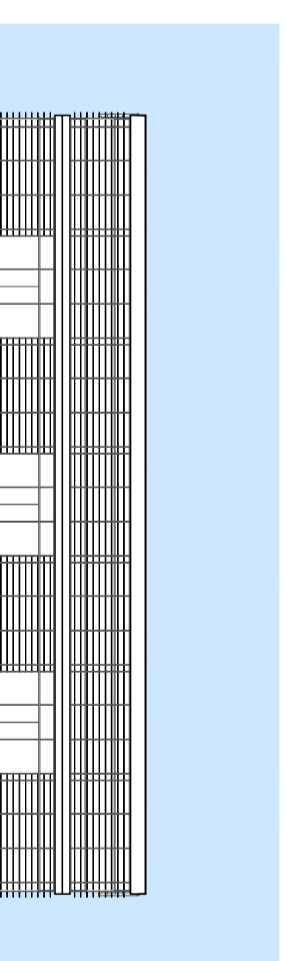
PROSPETTO 'B'



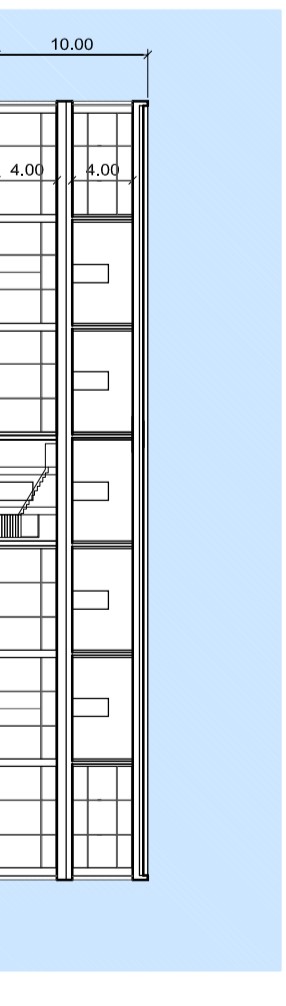
PROSPETTO 'D'



PROSPETTO 'C'



SEZIONE 'Y'



Gli schemi contenuti nel presente elaborato sono da intendere indicativi.  
La definizione degli elementi di progetto dei singoli edifici saranno stabiliti nelle  
successive fasi del progetto in relazione alle specifiche esigenze.