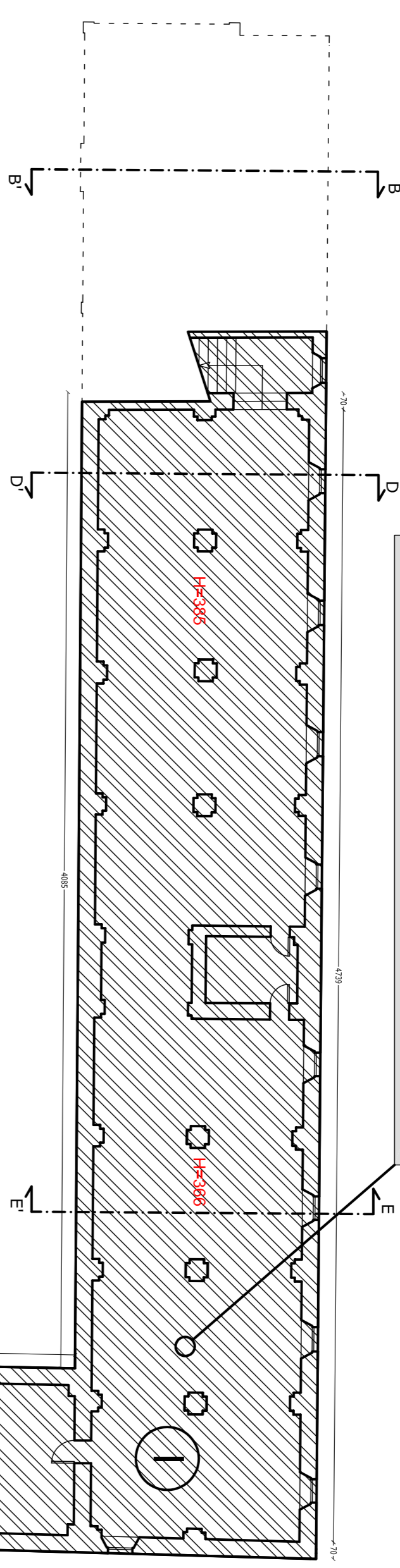
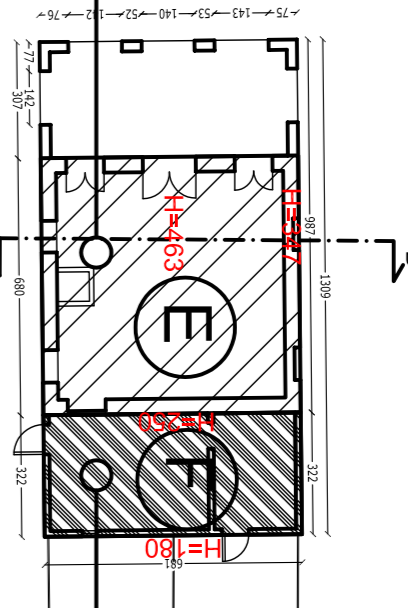


I
 SUL = 729,07 mq x 0,5 = 364,51 mq
 H_m = 3,55 m
 VOL = 2588,20 mc x 0,5 = 1294,10 mc

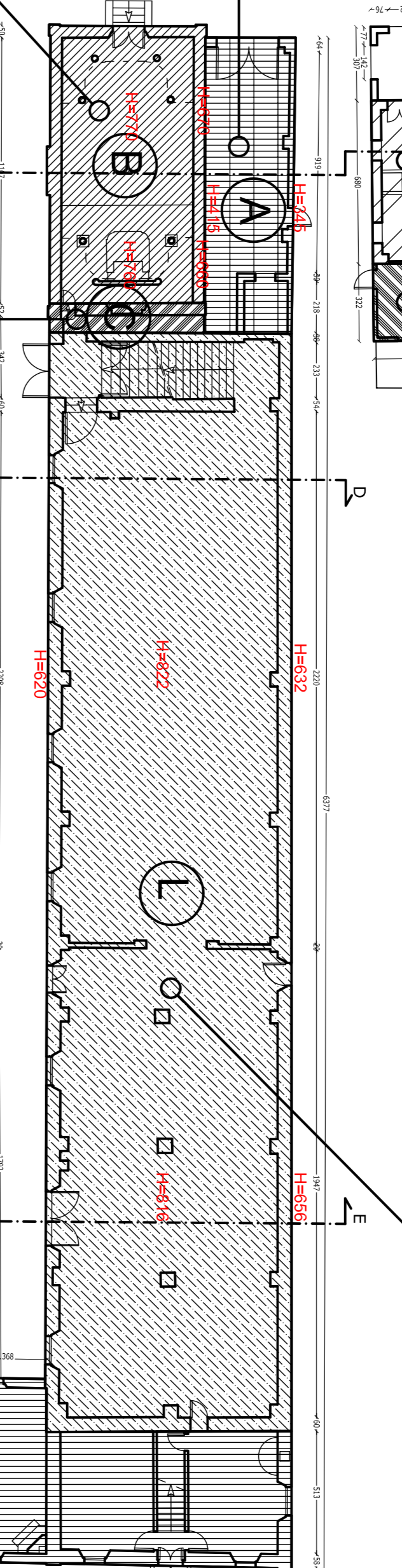


E
 SUL = 46,31 mq
 H_m = 4,05 m
 VOL = 187,56 mc



F
 SUL = 21,93 mq
 H_m = 2,15 m
 VOL = 47,15 mc

L
 SUL = 464,48 mq
 H_m = 7,30 m
 VOL = 3390,70 mc

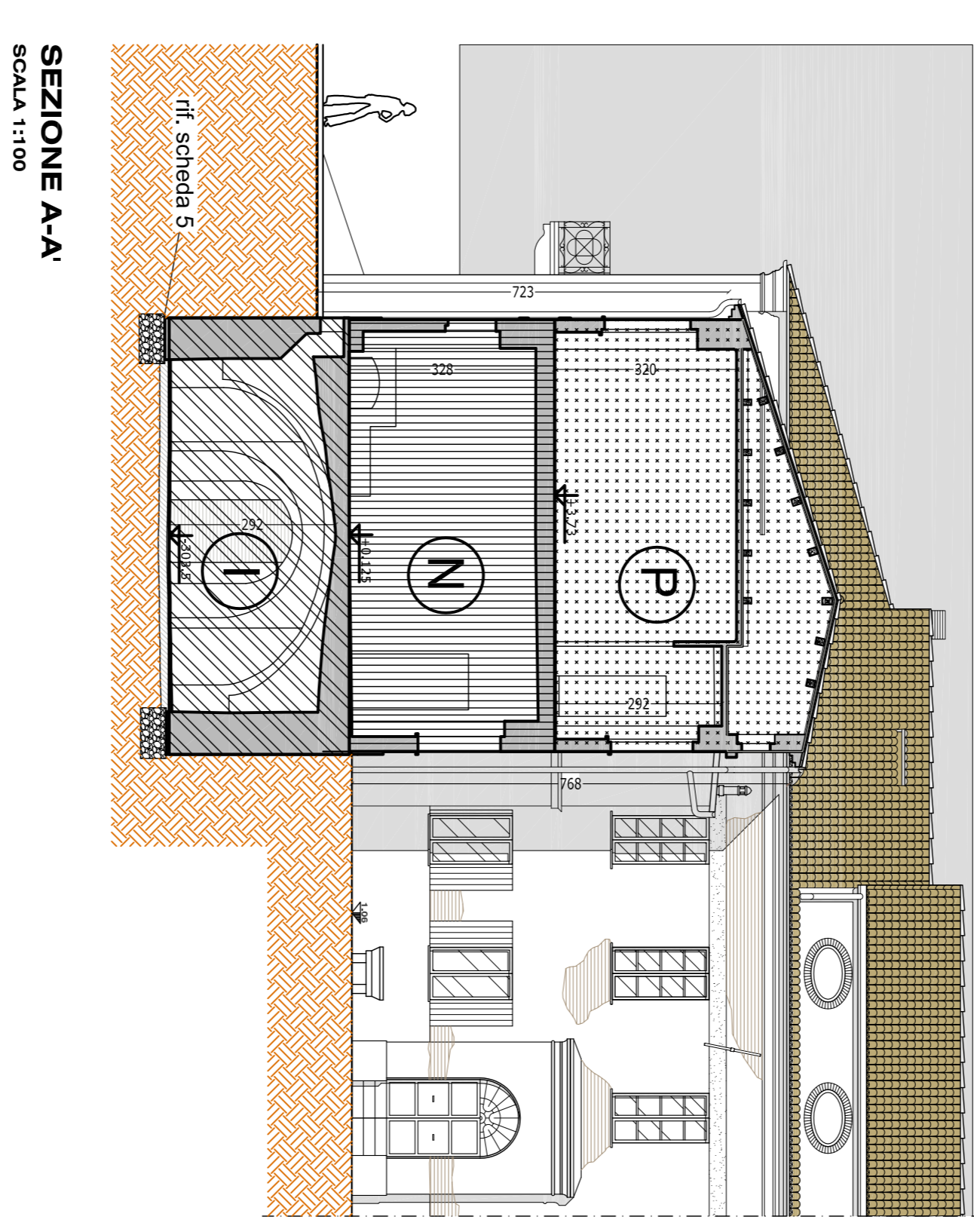
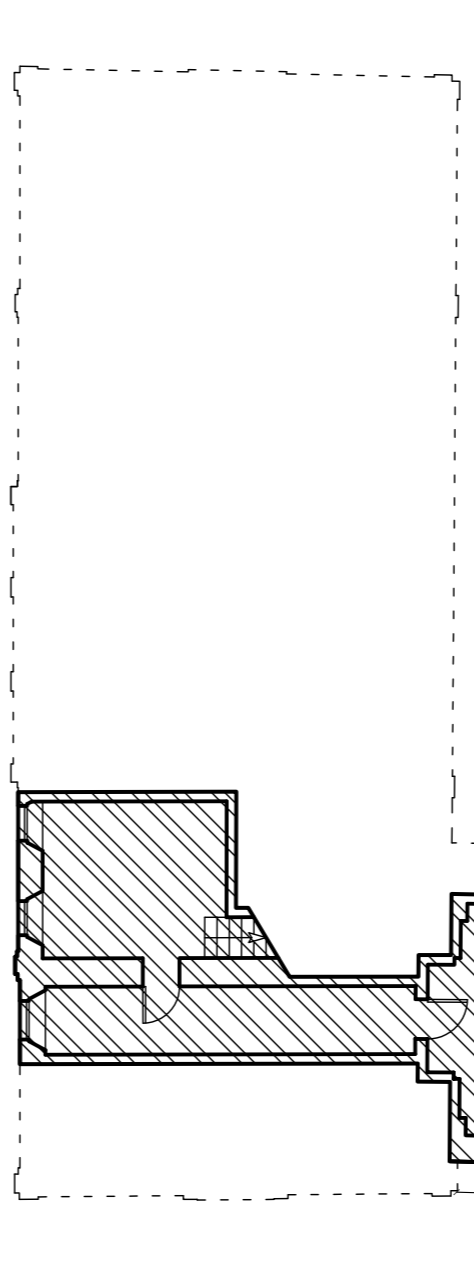
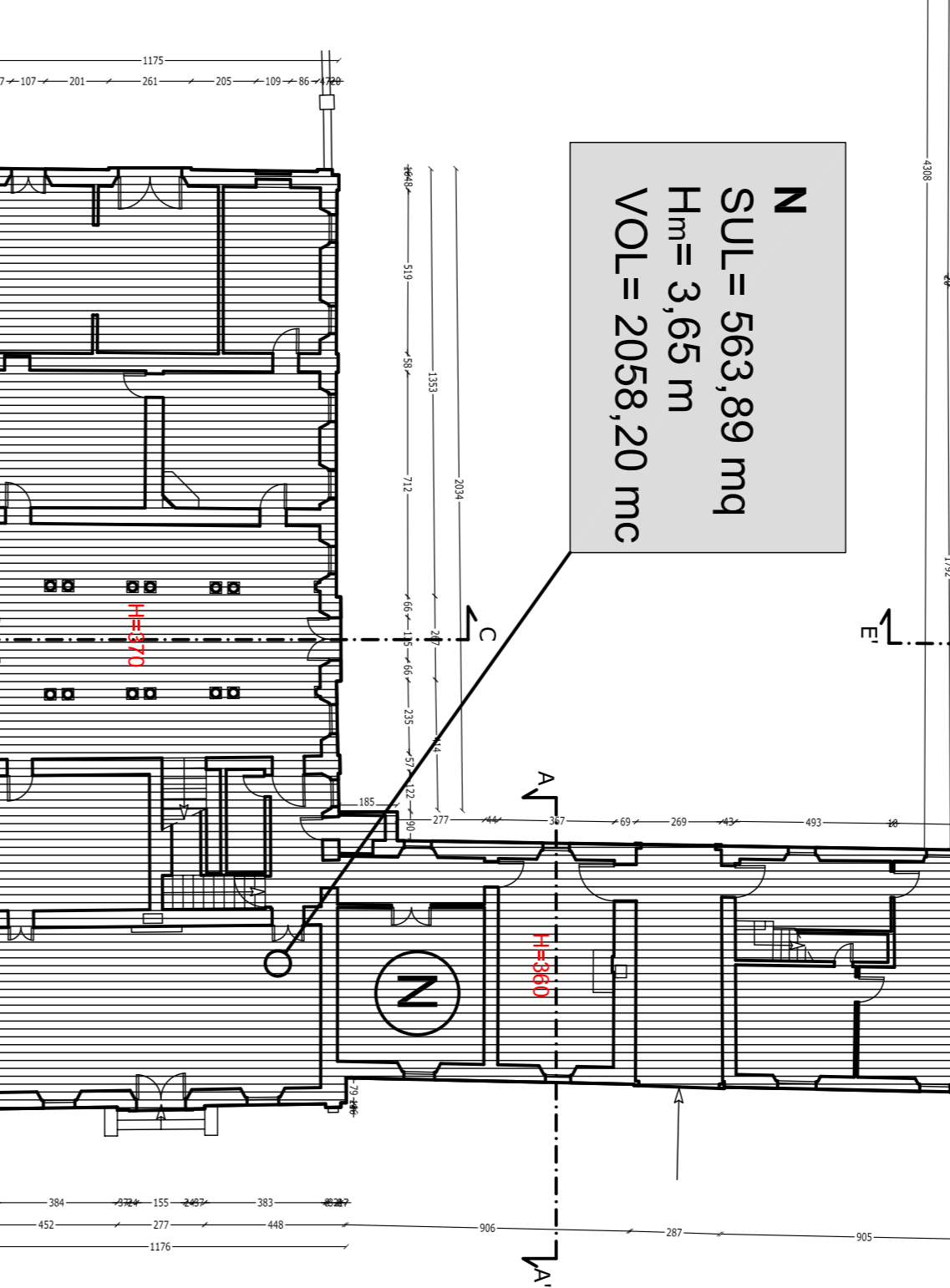


A
 SUL = 45,45 mq
 H_m = 3,80 m
 VOL = 172,71 mc

B
 SUL = 74,71 mq
 H_m = 7,15 m
 VOL = 534,18 mc

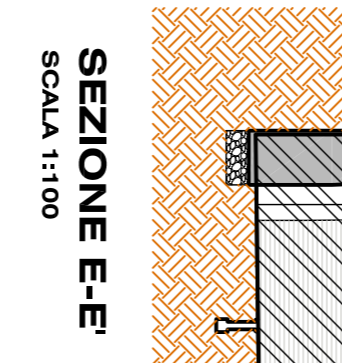
C
 SUL = 7,92 mq
 H_m = 8,30 m
 VOL = 65,74 mc

N
 SUL = 563,89 mq
 H_m = 3,65 m
 VOL = 2058,20 mc



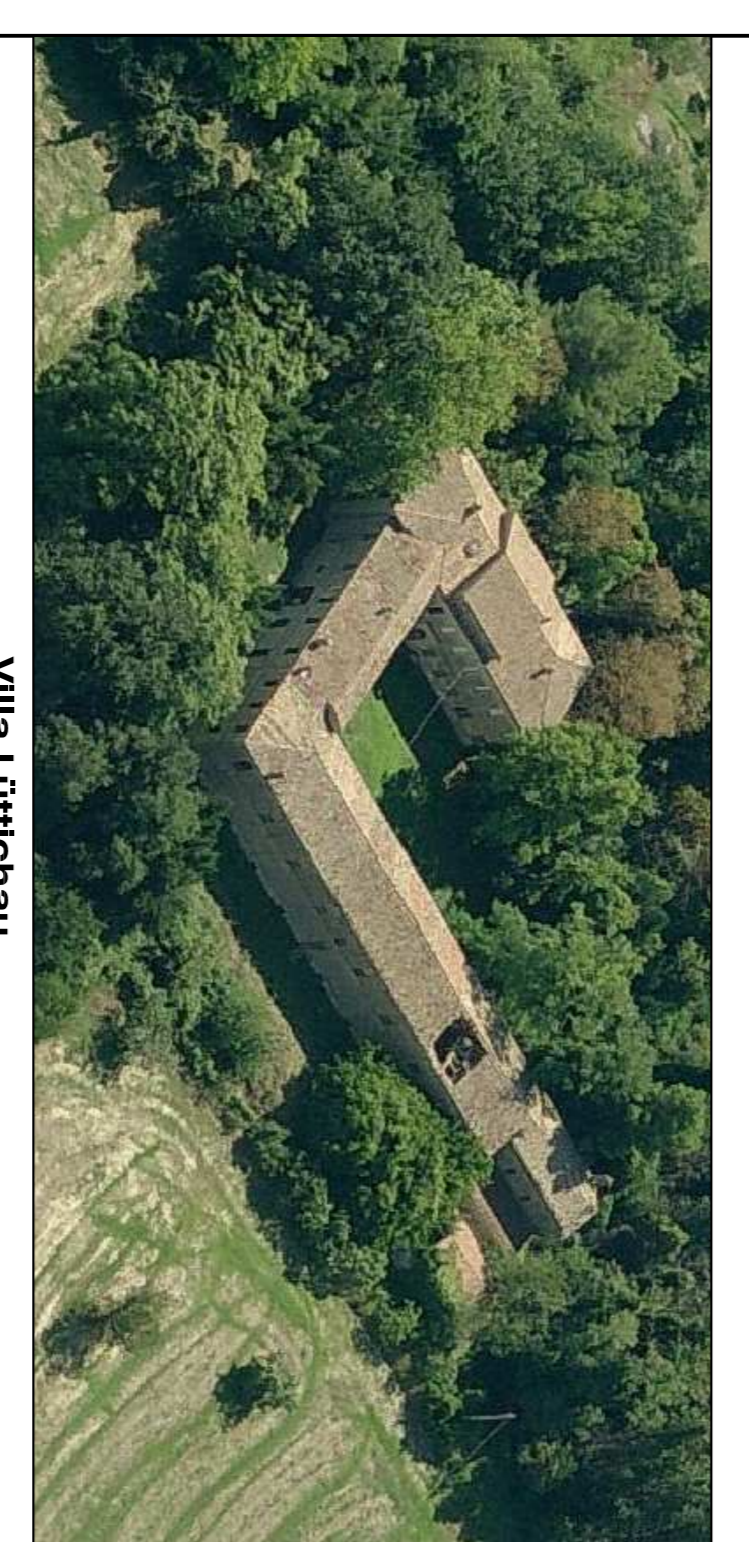
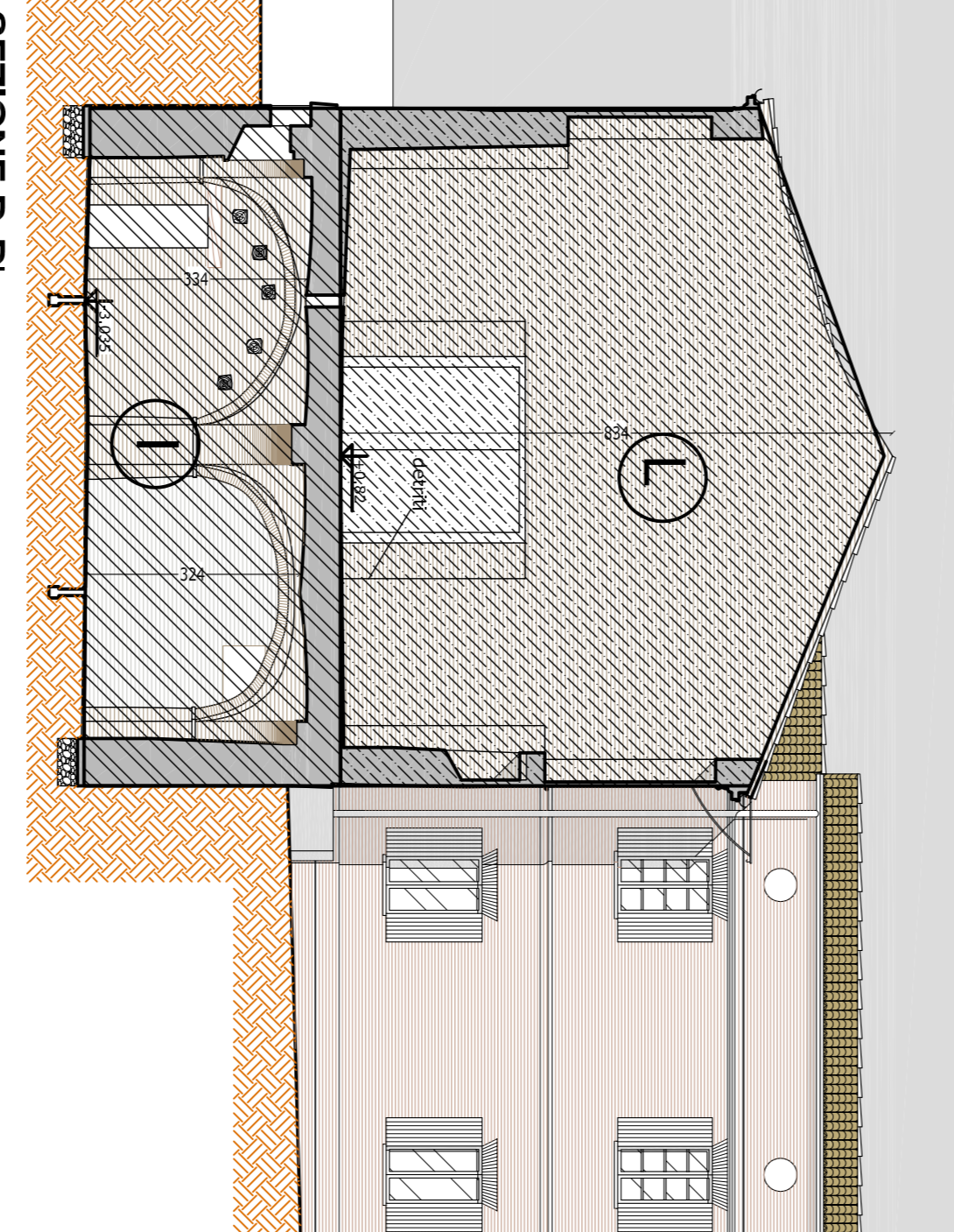
D
 SUL = 31,62 mq
 VOL = compreso nel calcolo del VOL al Piano Terra

M
 SUL = 459,92 mq
 VOL = compreso nel calcolo del VOL al Piano Terra



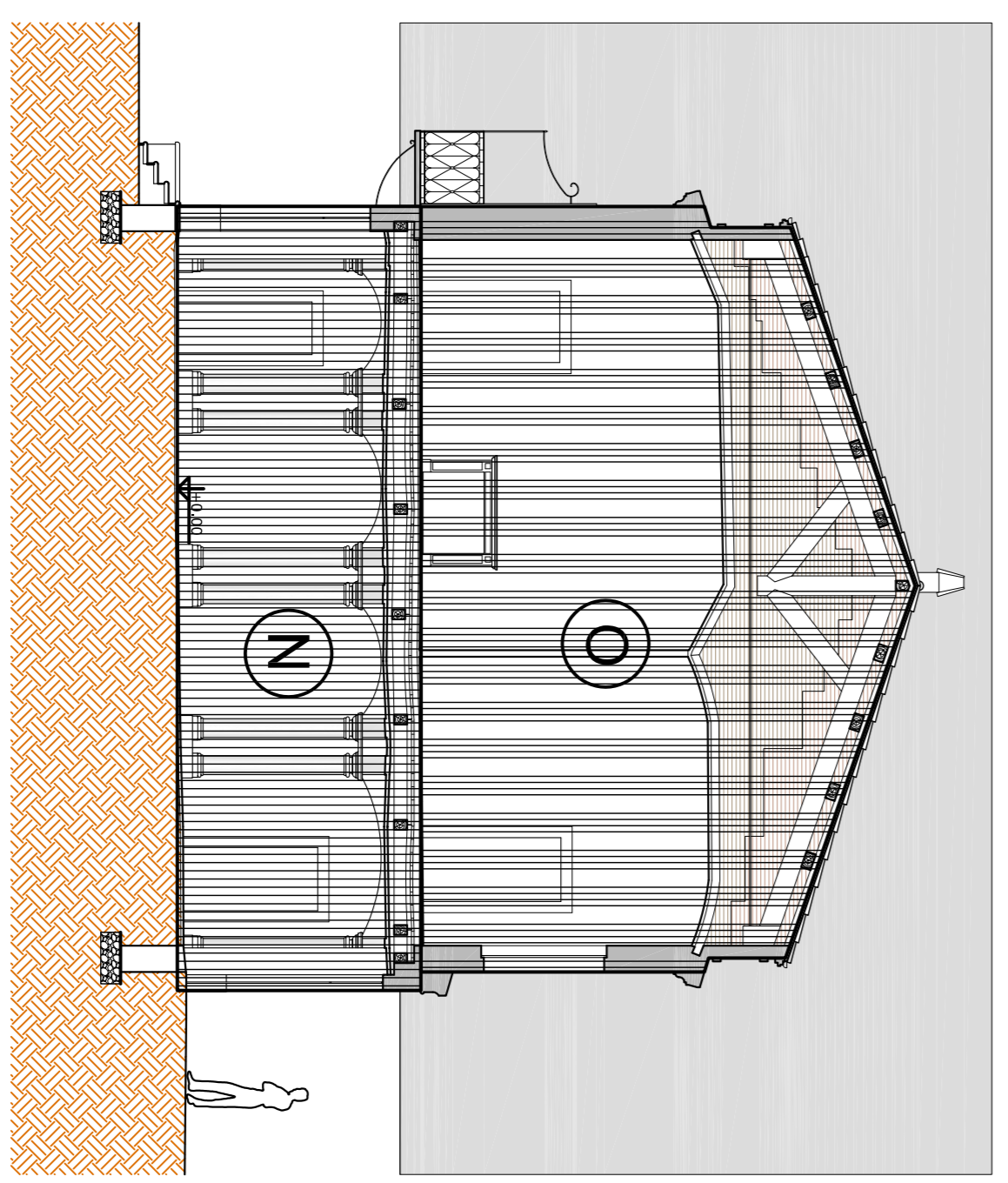
Q
 SUL = 62,20 mq
 H_m = 3,80 m
 VOL = 236,36 mc

P
 SUL = 163,02 mq
 H_m = 4,30 m
 VOL = 700,99 mc



Villa Lütichau
 Piano di recupero per il completamento delle opere di cui al P.C. n. 21/109 del 14/02/2011 e per la direzione e di interesse collettivo.
 Villa Lütichau, località Farveto di Fano (PU)
 STUDIO ASSOCIATO ERICCO ASSOCIATI

ELABORATO	STATO DI FATTO	DATA	DATA
CALENDARIO DEI VOLUMI E DELLA SUL	19	EMMISSIONE	REVISIONE
1:100 - 1:200	13/09/2010		
DOTT. ANGELO SIMONDI DOMENICO	DOTT. S. CECILIA FANO		



O
 SUL = 343,40 mq
 H_m = 5,50 m
 VOL = 1888,70 mc

