

## SCHEMI TIPOLOGICI

### FABBRICATO "A"

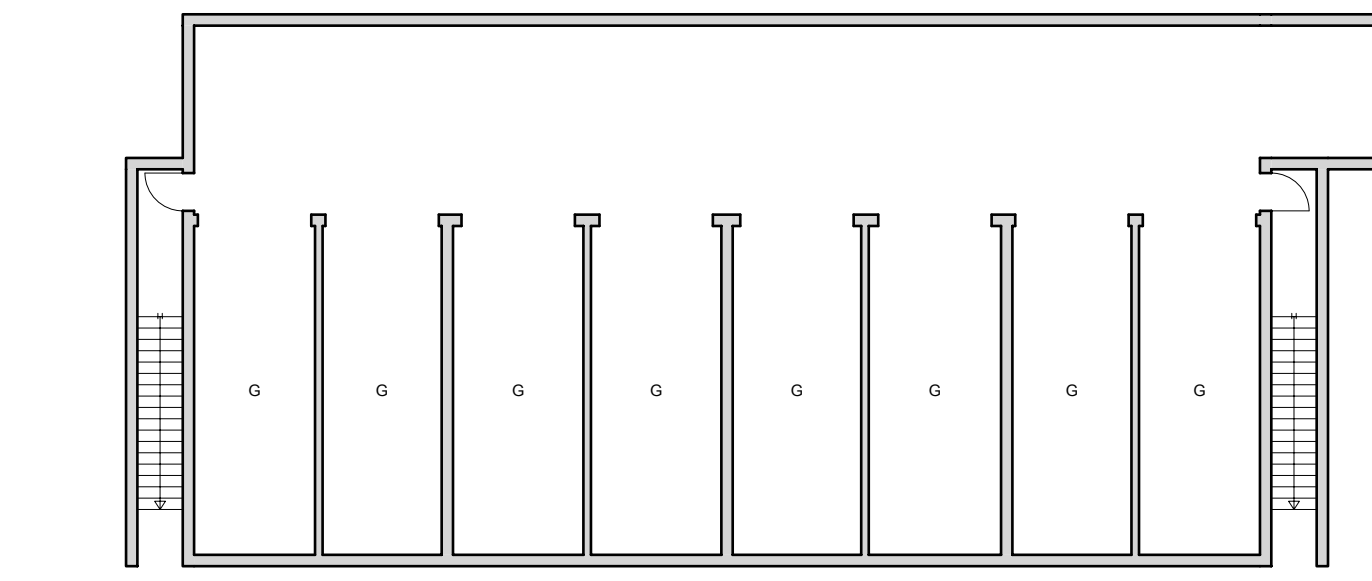
### FABBRICATI "B" e "C"

### FABBRICATI "D" ed "E"

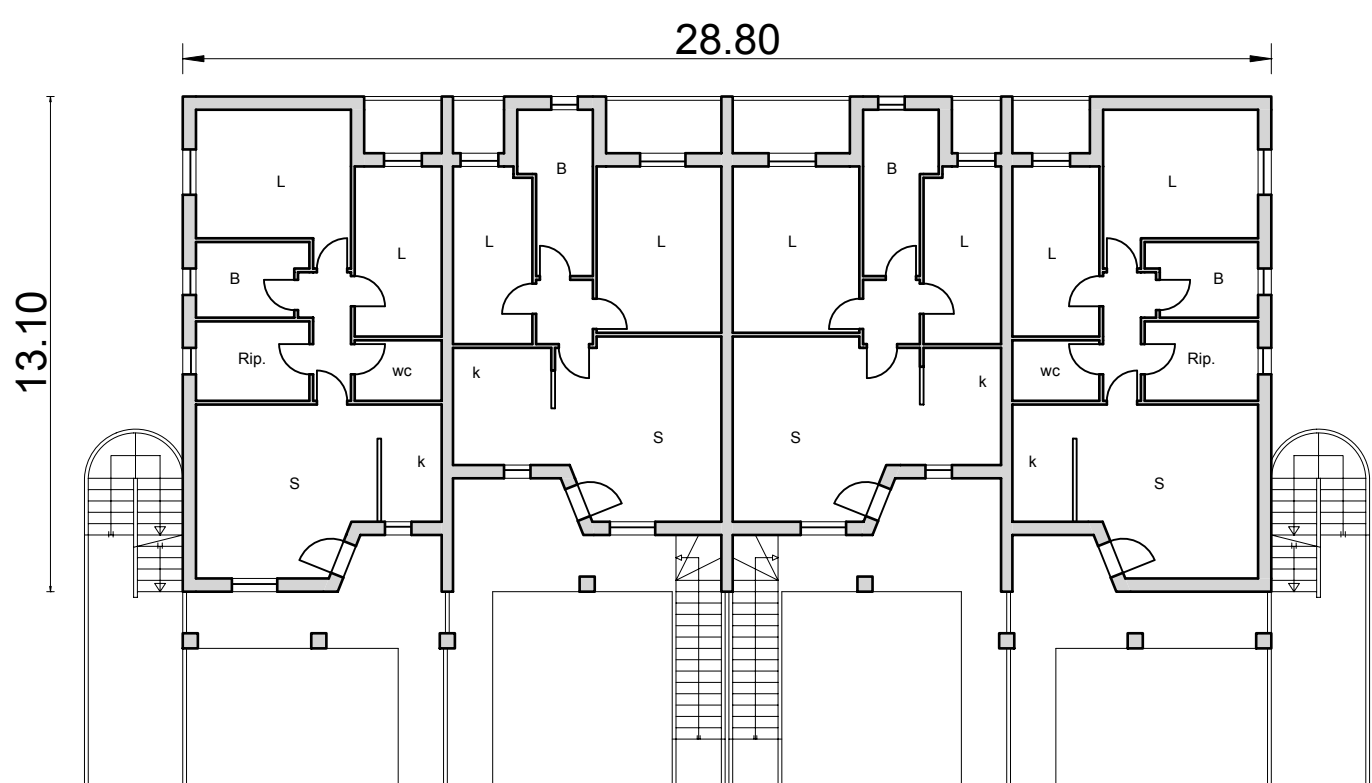
#### CALCOLO SUPERFICI UTILE LORDA GENERALE FABBRICATI "A" - "B" - "C" - "D" - "E"

Fabbricato "A" = 634.00 m<sup>2</sup>  
 Fabbricato "B" = 315.00 m<sup>2</sup>  
 Fabbricato "C" = 315.00 m<sup>2</sup>  
 Fabbricato "D" = 320.00 m<sup>2</sup>  
 Fabbricato "E" = 320.00 m<sup>2</sup>

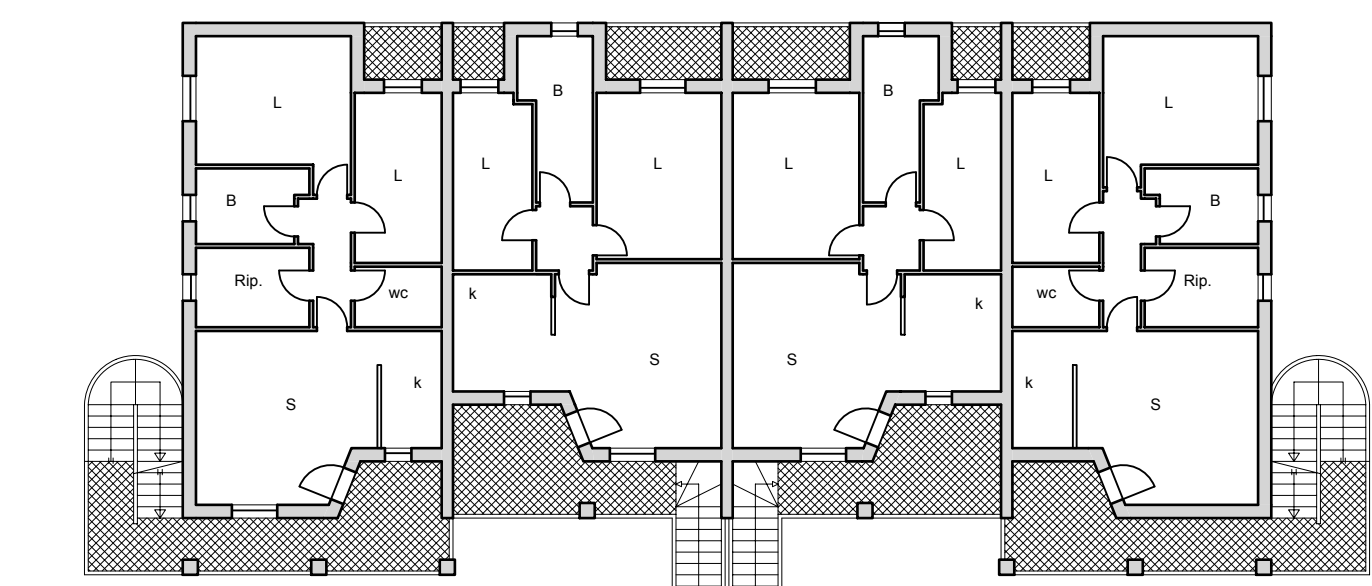
TOTALE SUL = 1904.00 m<sup>2</sup> < SUL AMMISSIBILE = 1904.53 m<sup>2</sup>



PIANO INTERRATO



PIANO TERRA

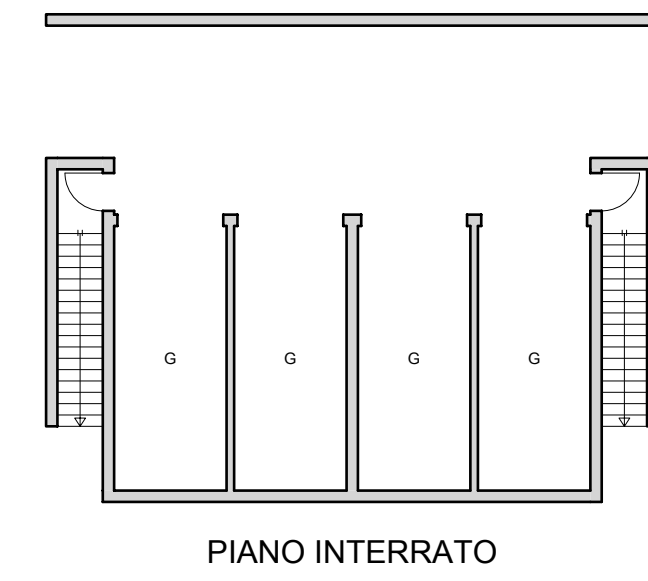


PIANO PRIMO

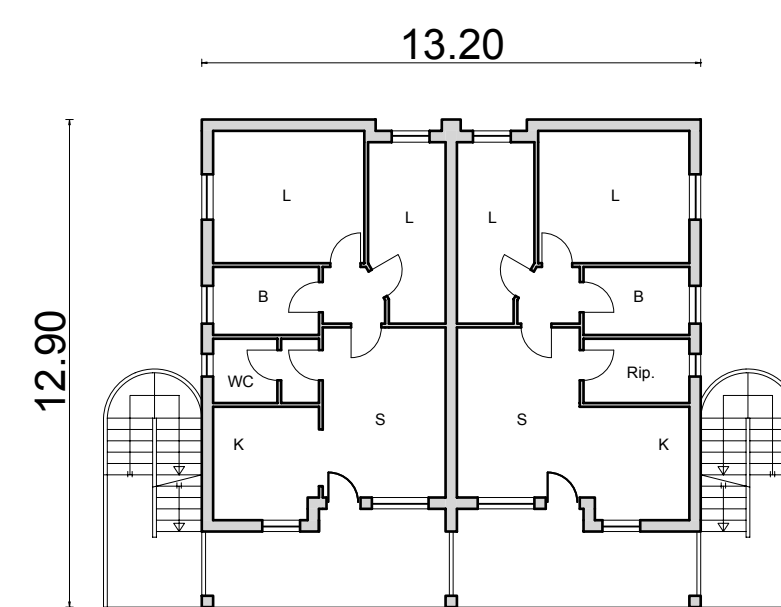
#### CALCOLO SUPERFICI UTILE LORDA FABBRICATO "A"

Fabbricato "A"  
 - PIANO TERRA = 317.00 m<sup>2</sup>  
 - PIANO PRIMO = 317.00 m<sup>2</sup>  
 Sommano = 634.00 m<sup>2</sup>

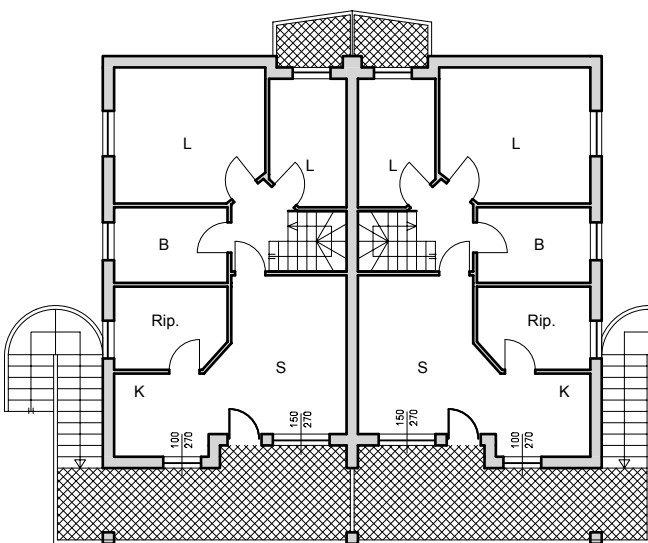
SUPERFICIE TOTALE = 634.00 m<sup>2</sup>



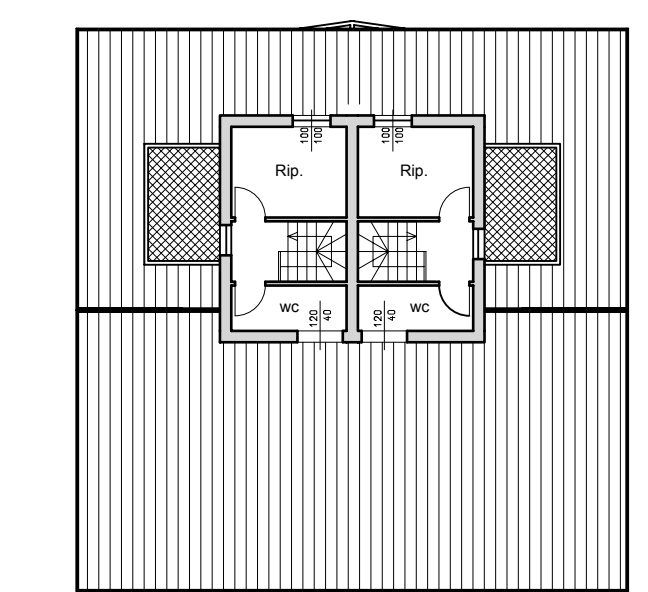
PIANO INTERRATO



PIANO TERRA



PIANO PRIMO



PIANO SECONDO

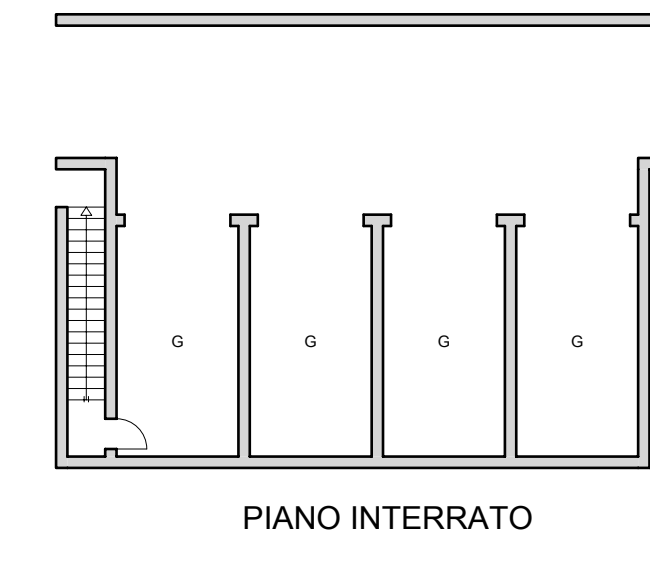
#### CALCOLO SUPERFICI UTILE LORDA FABBRICATI "B" e "C"

Fabbricato "B"  
 - PIANO TERRA = 136.50 m<sup>2</sup>  
 - PIANO PRIMO = 136.50 m<sup>2</sup>  
 - PIANO SECONDO = 42.00 m<sup>2</sup>  
 Sommano = 315.00 m<sup>2</sup>

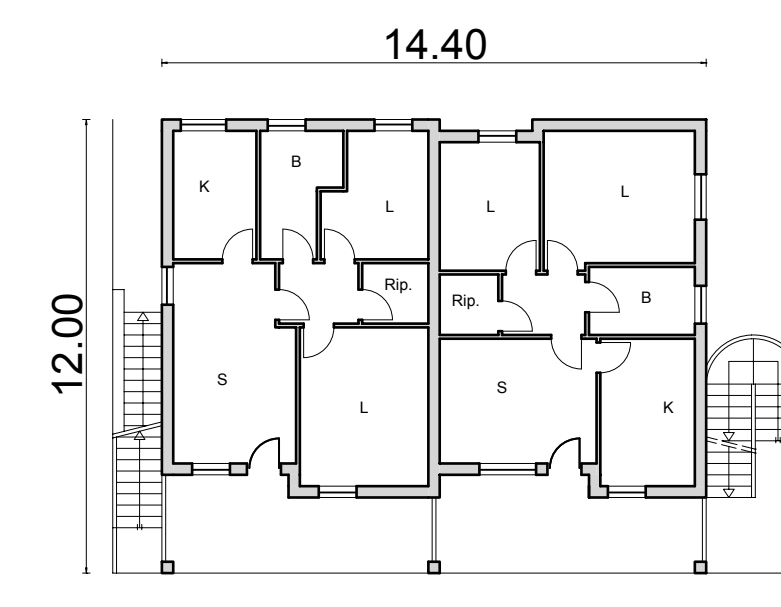
Fabbricato "C"

- PIANO TERRA = 136.50 m<sup>2</sup>  
 - PIANO PRIMO = 136.50 m<sup>2</sup>  
 - PIANO SECONDO = 42.00 m<sup>2</sup>  
 Sommano = 315.00 m<sup>2</sup>

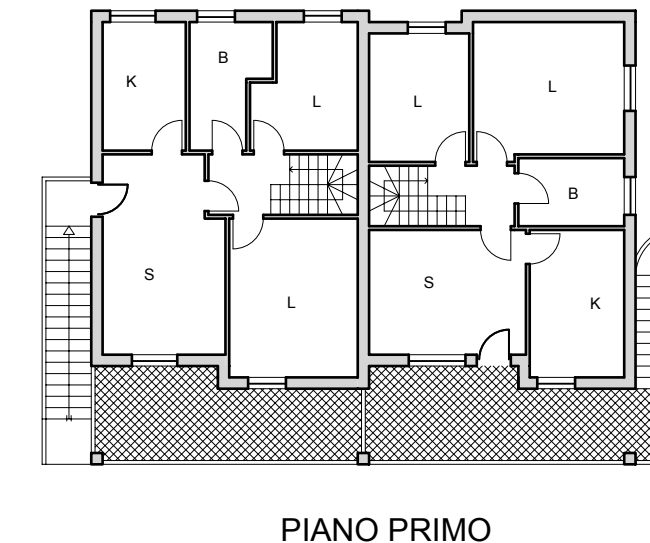
SUPERFICIE TOTALE = 315.00 x 2 = 630.00 m<sup>2</sup>



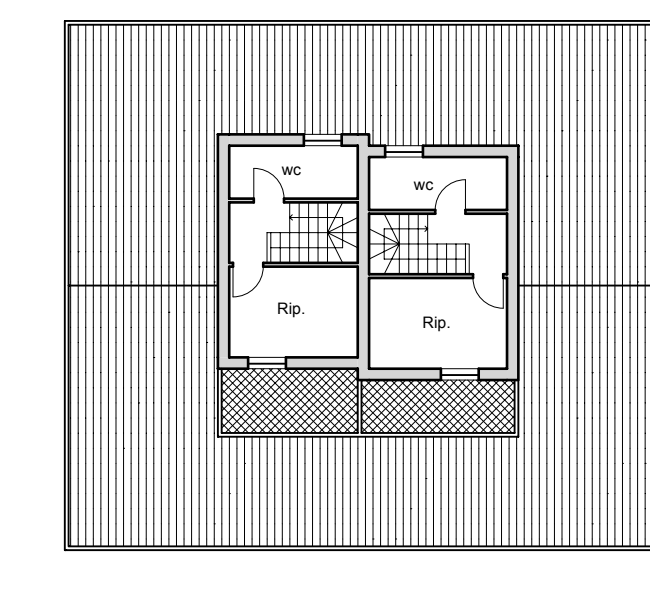
PIANO INTERRATO



PIANO TERRA



PIANO PRIMO



PIANO SECONDO

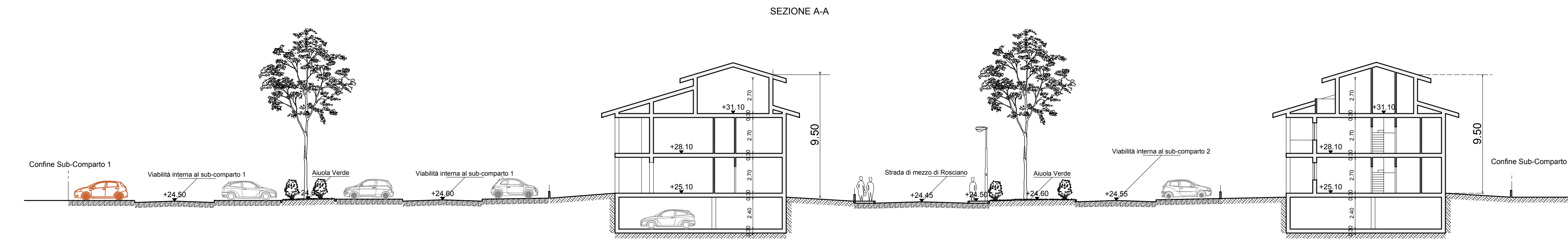
#### CALCOLO SUPERFICI UTILE LORDA FABBRICATI "D" ed "E"

Fabbricato "D"  
 - PIANO TERRA = 135.50 m<sup>2</sup>  
 - PIANO PRIMO = 135.50 m<sup>2</sup>  
 - PIANO SECONDO = 49.00 m<sup>2</sup>  
 Sommano = 320.00 m<sup>2</sup>

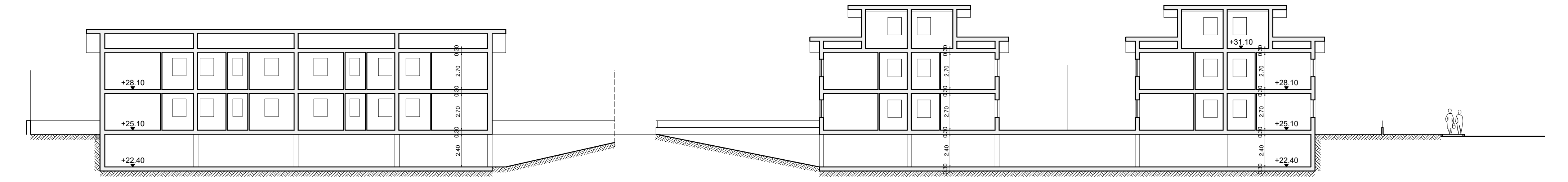
Fabbricato "E"

- PIANO TERRA = 135.50 m<sup>2</sup>  
 - PIANO PRIMO = 135.50 m<sup>2</sup>  
 - PIANO SECONDO = 49.00 m<sup>2</sup>  
 Sommano = 320.00 m<sup>2</sup>

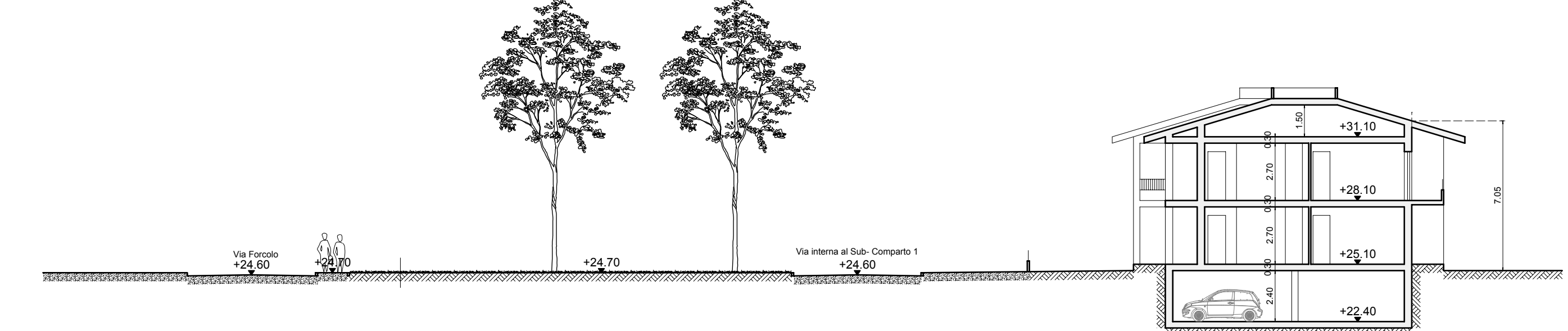
SUPERFICIE TOTALE = 320.00 x 2 = 640.00 m<sup>2</sup>



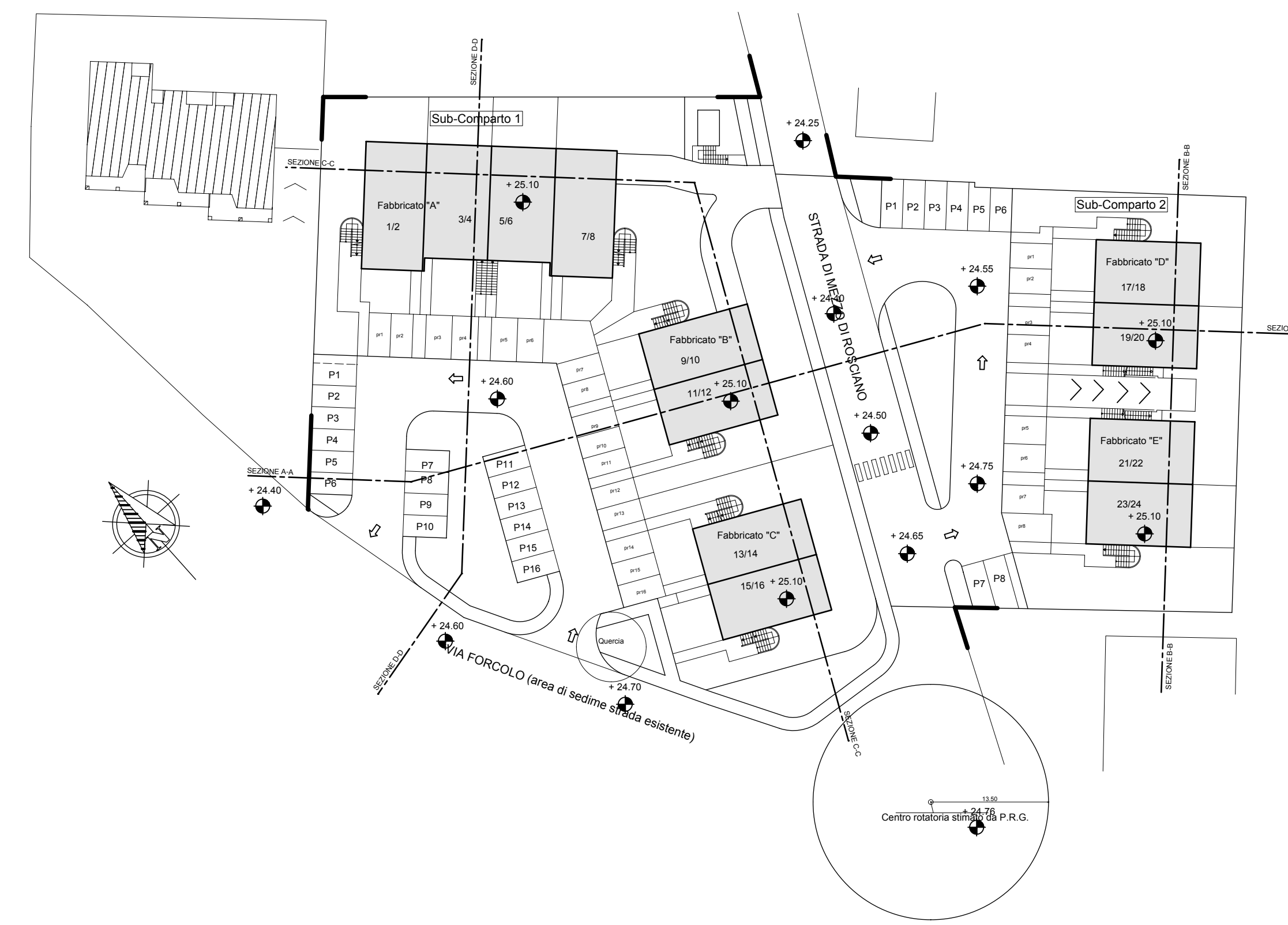
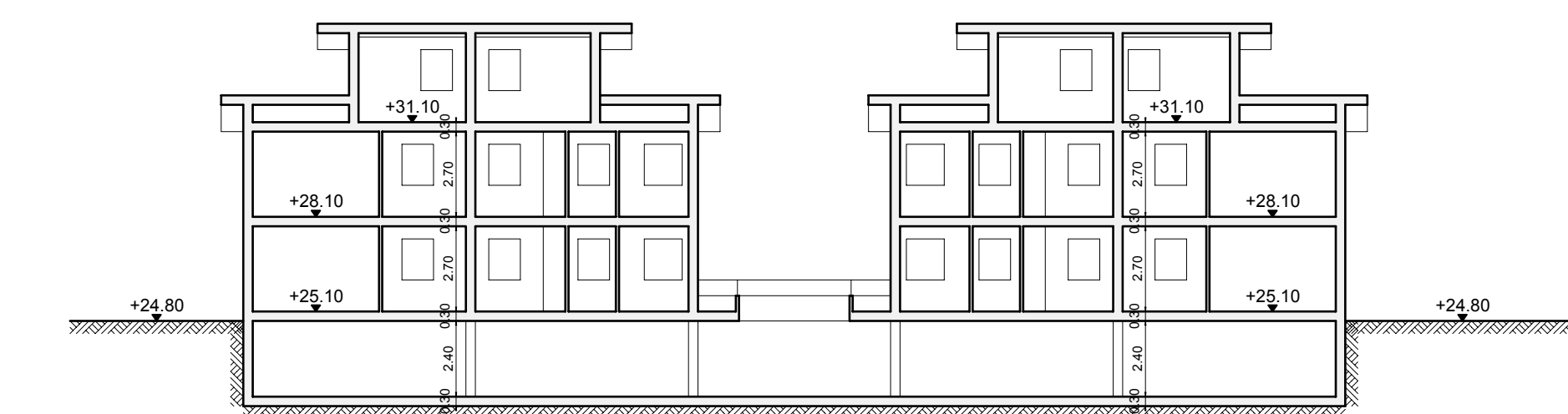
SEZIONE C-C



SEZIONE D-D



SEZIONE D-D



#### COMUNE DI FANO

Conditore: EDLART SRL pi. 0049900492 BLC di Baldi Luca e C. snc. pi. 089495045

Oggetto: PIANO ATTUATIVO DEL COMPARTO ST5\_554 "COMPARTO DI TRASFORMAZIONE EX CAPANNONI AMAF" SITO IN LOCALITA' FORCOLO.

#### SCHEMI TIPOLOGICI E SEZIONI

Il Tecnico

Dott. Arch. Pietro Broccoli

Dott. Arch. Pietro Del Bianco

Il Proprietario

EDLART s.r.l.

BLC di Baldi Luca e C. snc.

Scala  
1:200  
1:500

Tavola n°

A

7