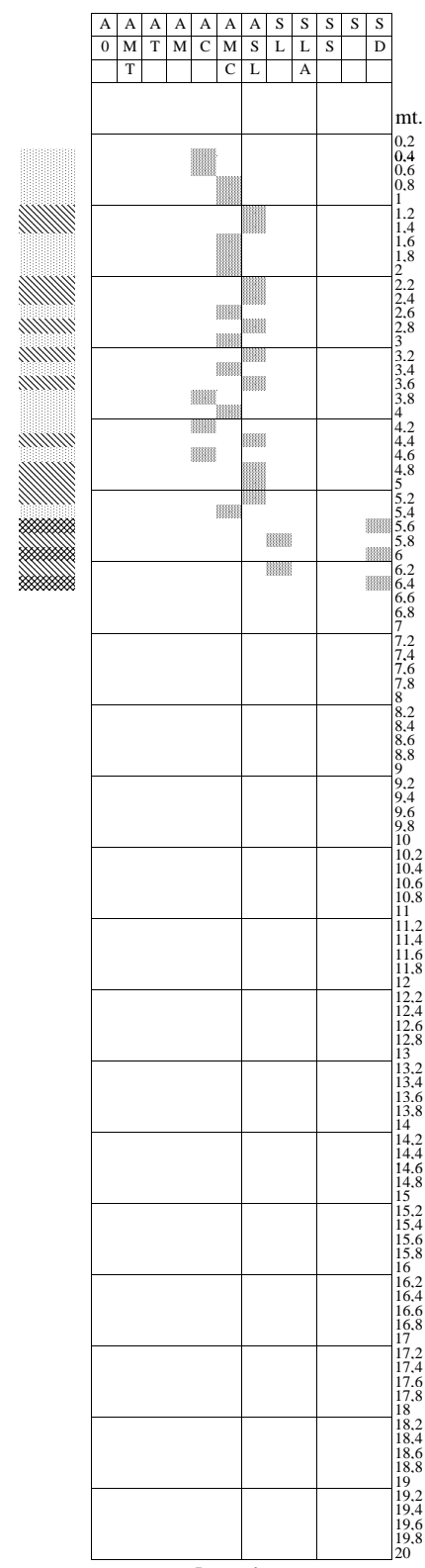
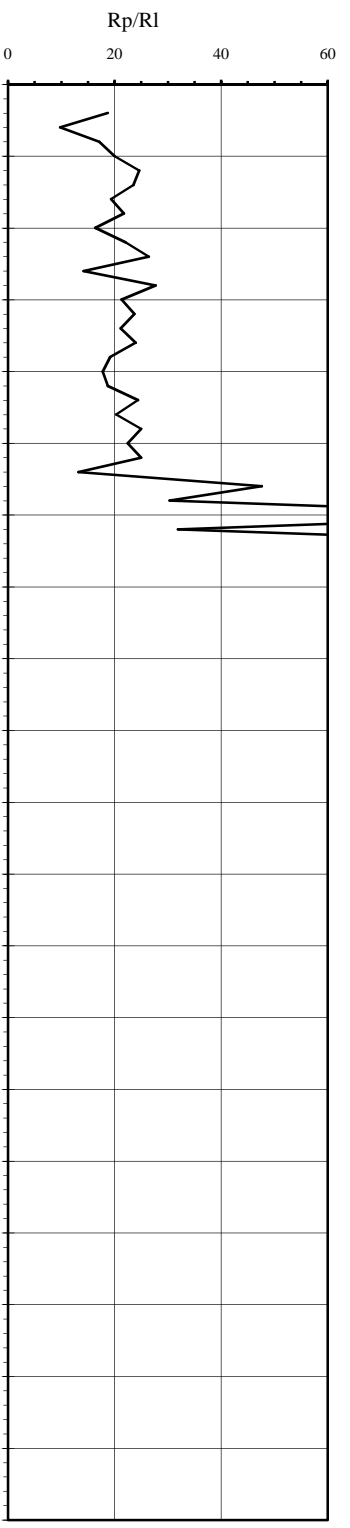
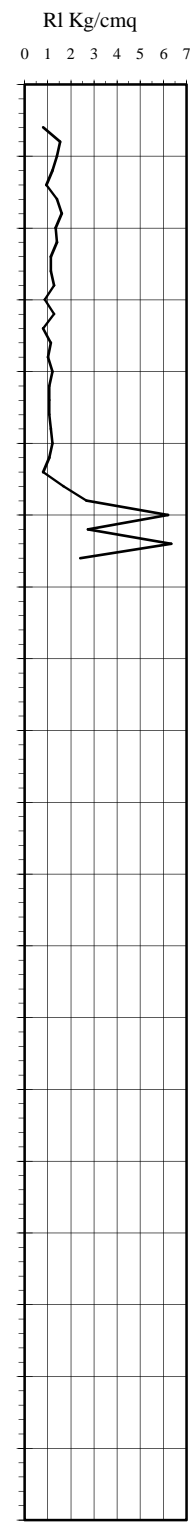
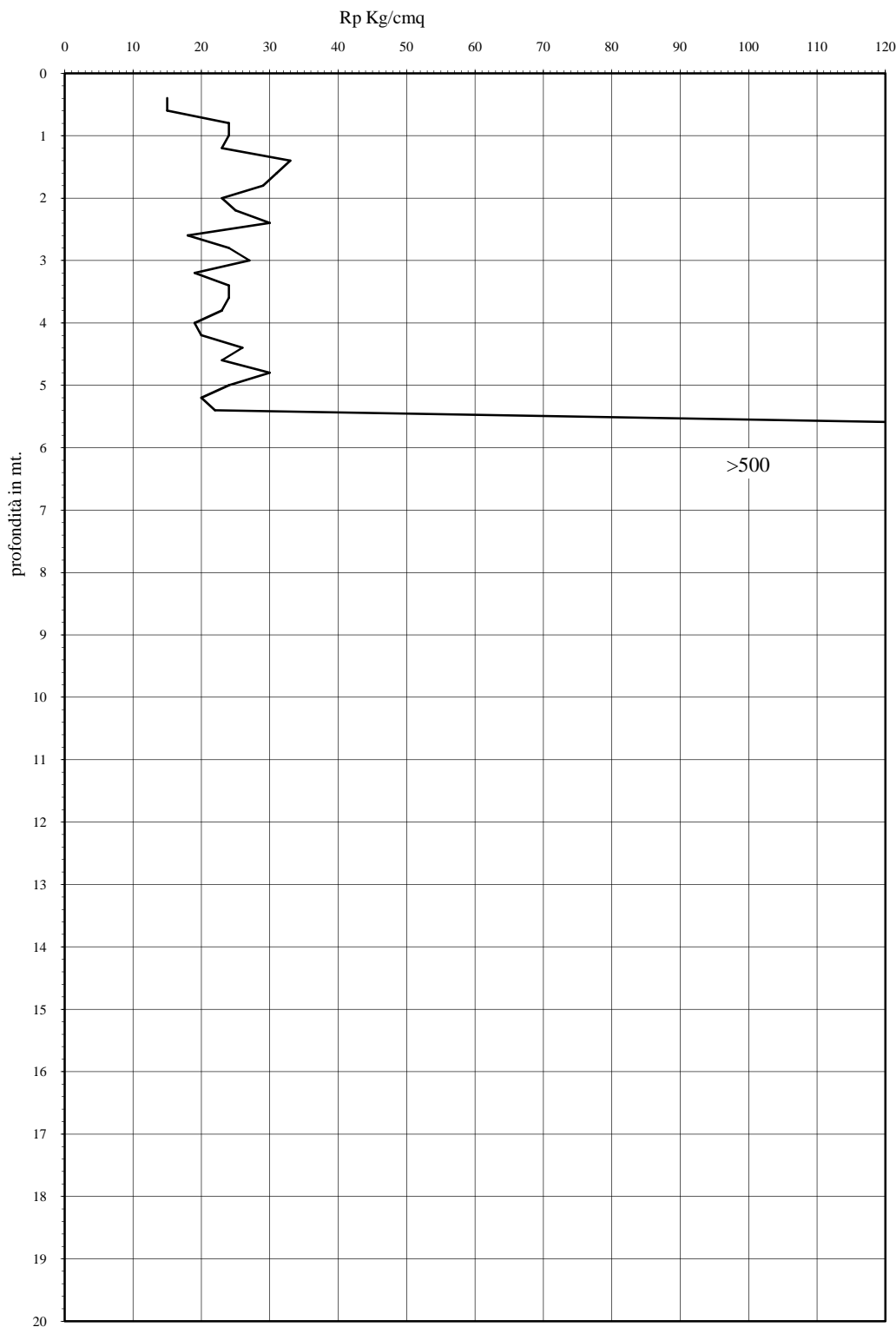


Prova n.: CPT1
 Cantiere: Fano (PU) - via Marche
 Data: Maggio 2010

Quota inizio: piano campagna
 Liv.falda: assente
 Note:

Classificazione orientativa dei terreni (Schmertmann - 1978)



mt.	Rp	RI	Rp/RI
0.2	15		18.75
0.4	15	0.80	9.78
0.6	24	1.53	17.14
0.8	24	1.40	20.00
1.2	23	1.20	24.64
1.4	33	0.93	23.57
1.6	31	1.40	19.38
1.8	29	1.60	21.75
2.2	23	1.33	16.43
2.2	25	1.40	22.06
2.4	30	1.13	26.47
2.6	18	1.13	14.21
2.8	24	1.27	27.69
3.2	27	0.87	21.32
3.2	19	1.27	23.75
3.4	24	0.80	21.18
3.6	24	1.13	24.00
3.8	23	1.00	19.17
4.2	19	1.20	17.81
4.2	20	1.07	18.75
4.4	26	1.07	24.38
4.6	23	1.07	20.29
4.8	30	1.13	25.00
5.2	24	1.20	22.50
5.2	20	1.07	25.00
5.4	22	0.80	13.20
5.6	127	1.67	47.63
5.8	188	2.67	30.32
6.2	290	6.20	106.10
6.4	202	2.73	31.89
6.6	260	6.33	108.33
6.8	218	2.40	
7.0	500		
7.2			
7.4			
7.6			
7.8			
8.0			
8.2			
8.4			
8.6			
8.8			
9.0			
9.2			
9.4			
9.6			
9.8			
10.0			
10.2			
10.4			
10.6			
10.8			
11.0			
11.2			
11.4			
11.6			
11.8			
12.0			
12.2			
12.4			
12.6			
12.8			
13.0			
13.2			
13.4			
13.6			
13.8			
14.0			
14.2			
14.4			
14.6			
14.8			
15.0			
15.2			
15.4			
15.6			
15.8			
16.0			
16.2			
16.4			
16.6			
16.8			
17.0			
17.2			
17.4			
17.6			
17.8			
18.0			
18.2			
18.4			
18.6			
18.8			
19.0			
19.2			
19.4			
19.6			
19.8			
20.0			

φ °	Dr	Cu Kg/cmq	Nspt
/	/	0.75	/
/	/	0.75	/
/	/	1.2	/
/	/	1.2	/
/	/	1.15	/
/	/	1.65	/
/	/	1.55	/
/	/	1.45	/
/	/	1.15	/
/	/	1.25	/
/	/	1.5	/
/	/	0.9	/
/	/	1.2	/
/	/	1.35	/
/	/	0.95	/
/	/	1.2	/
/	/	1.2	/
/	/	1.5	/
/	/	1.15	/
/	/	1.15	/
/	/	1	/
/	/	1.3	/
/	/	1.15	/
/	/	1.5	/
/	/	1.2	/
/	/	1	/
40	0.62	1.1	31.75
/	/	/	47
51	1.03	/	72.5
/	/	/	50.5
49	0.95	/	65

Verifica alla liquefazione
 magnitudo di 6 g
 accelerazione massima al suolo 0,25 g
 (Seed et al. 1985)
 coefficiente di sicurezza

Legenda:

argilla
 AO argilla organica e terreni misti; AMT argilla molto tenera;
 AT argilla tenera; AM argilla media; AC argilla compatta

Cu media Kg/cmq 1,18269 53,35 Nspt media n. colpi

Caratteristiche strumento: penetrometro statico semovente, 200kN spinta
 Punta meccanica tipo Begemann - manicotto laterale superficie 150 cmq

n.l. non liquefacibile