

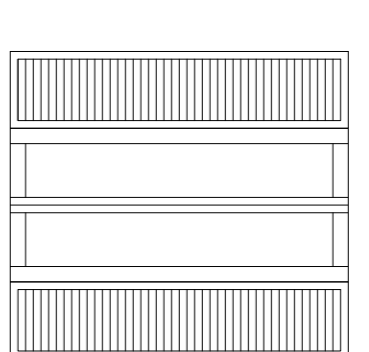
ABACO DELLE BUCATURE

STATO DI FATTO

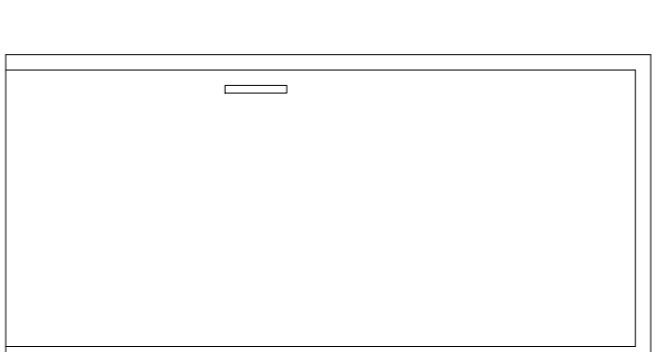
FRONTE

STATO DI PROGETTO

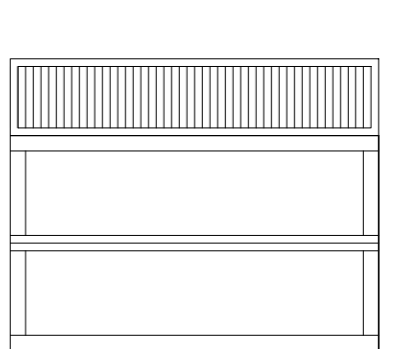
FRONTE



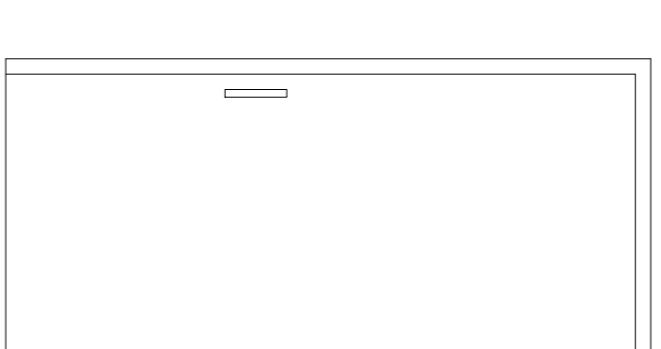
50 X 110



100 X 210

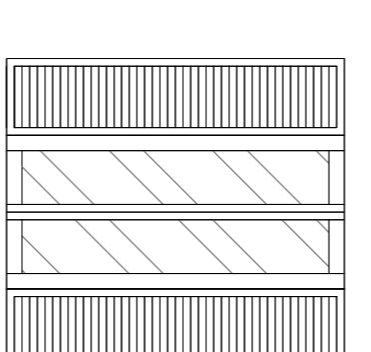


70 X 120



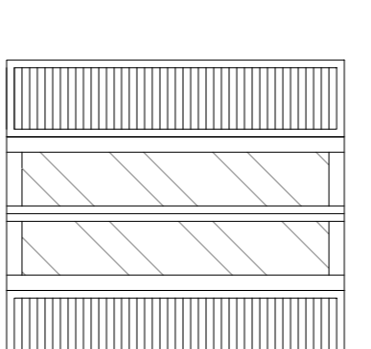
100 X 220

RETRO



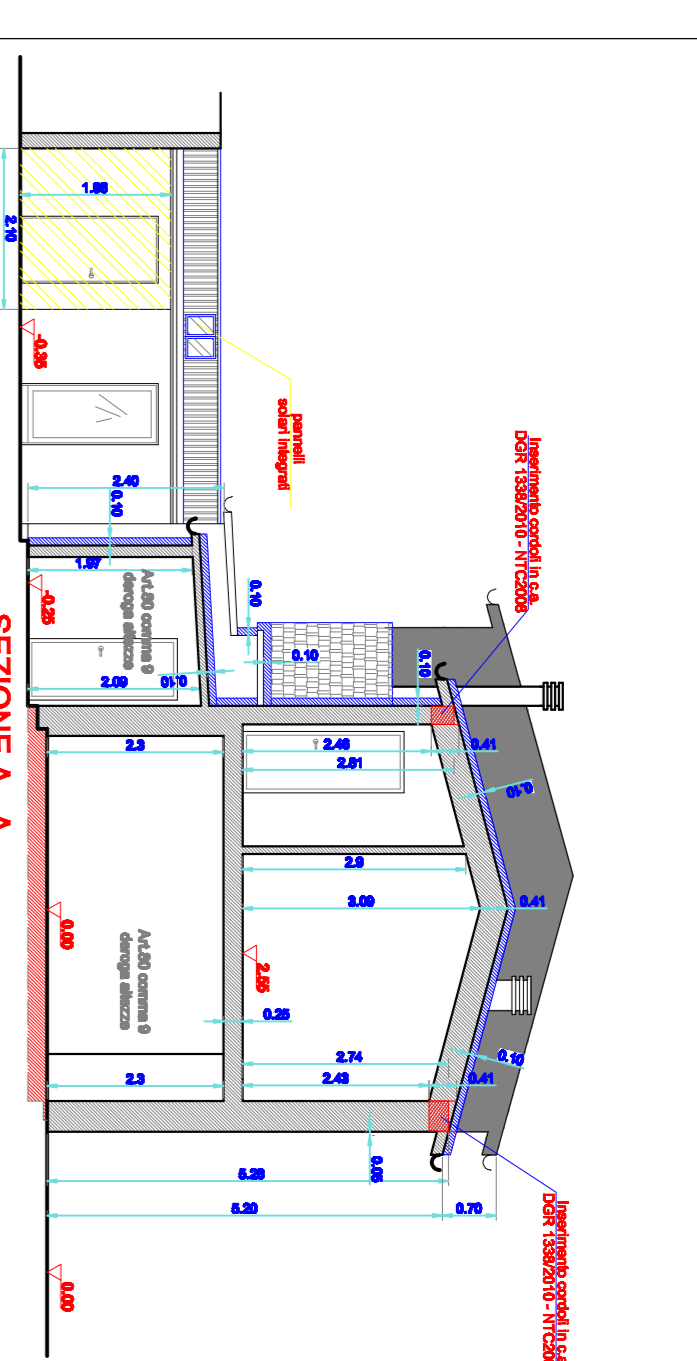
50 X 110

RETRO

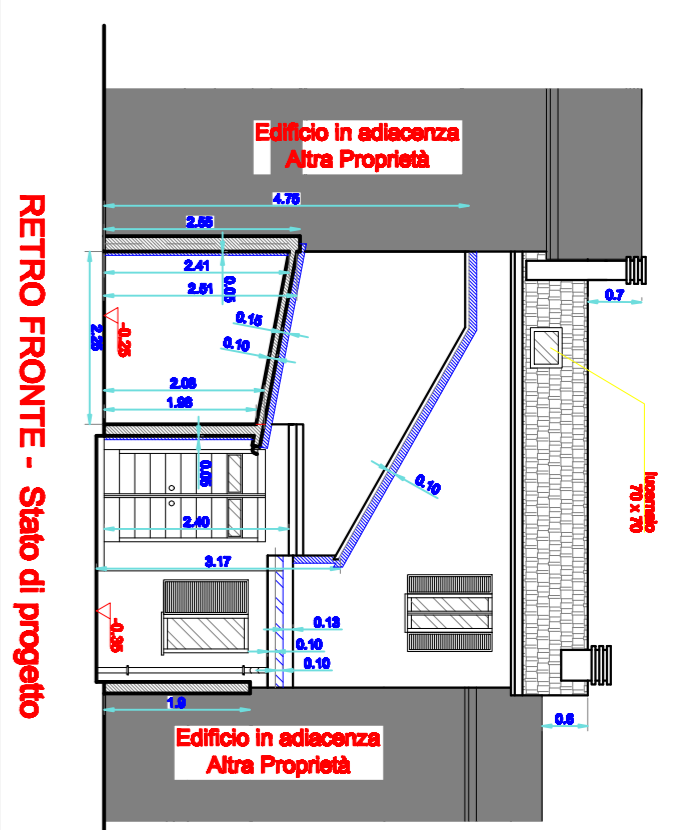


50 X 110

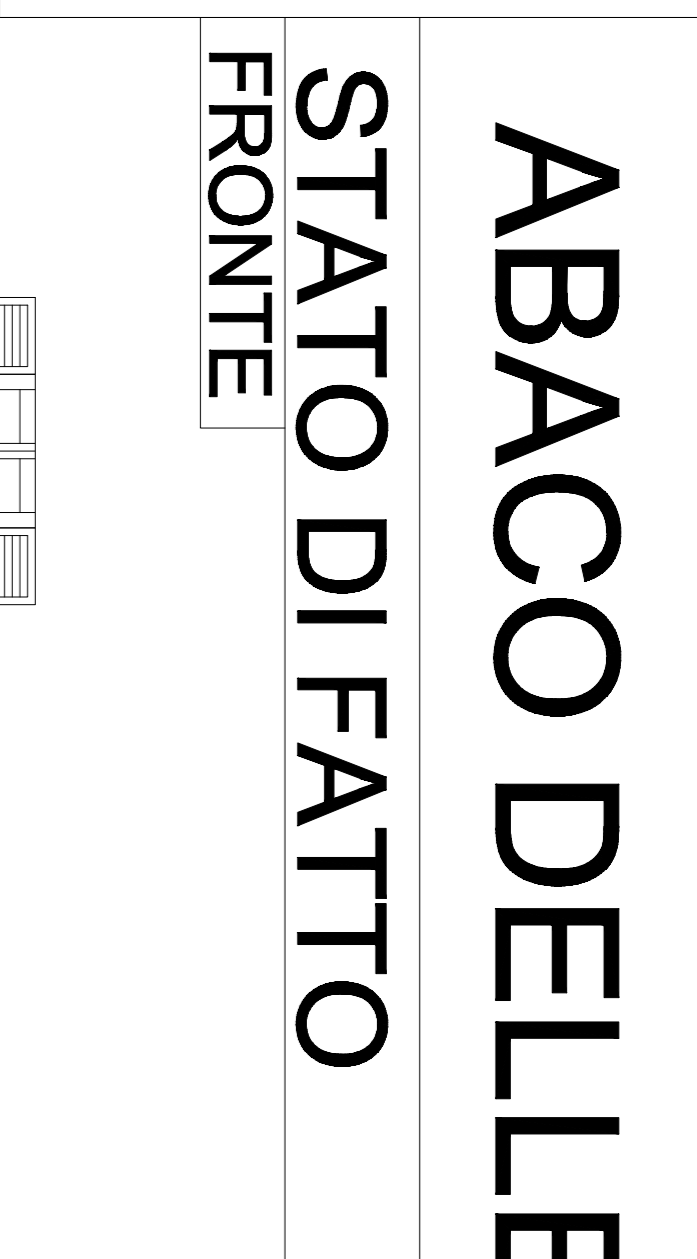
PROGETTO ARCHITETTURA: STUDIO ABBACO



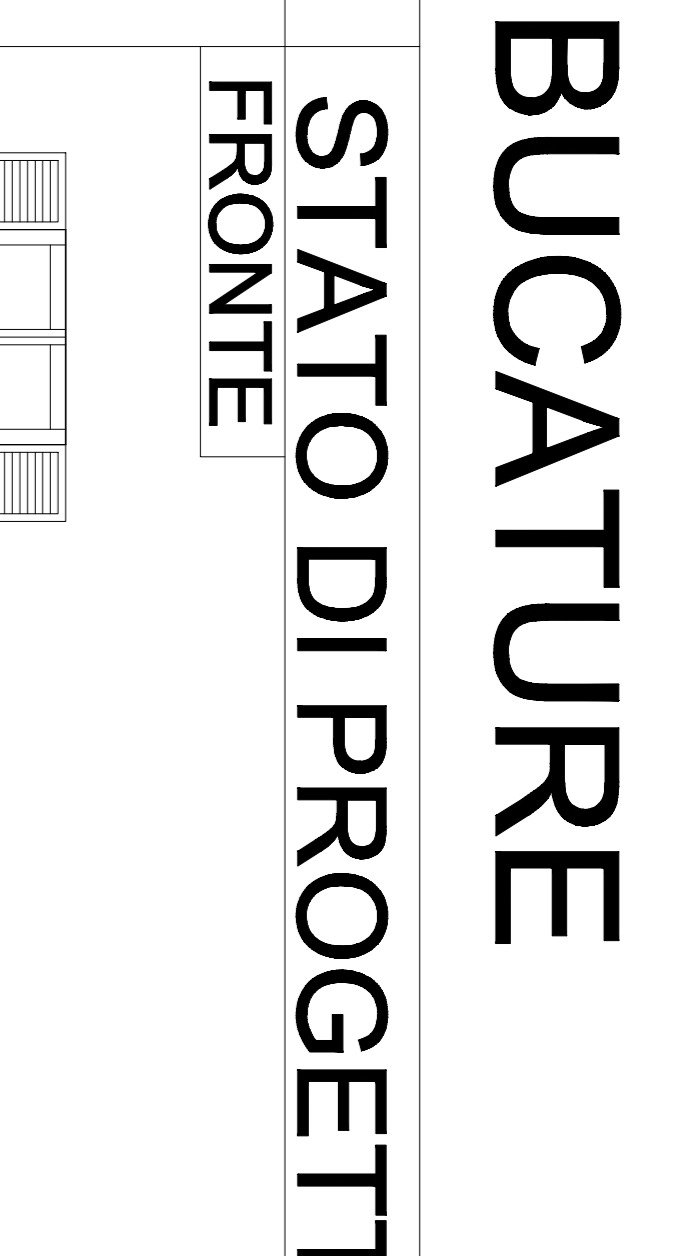
SEZIONE A - A



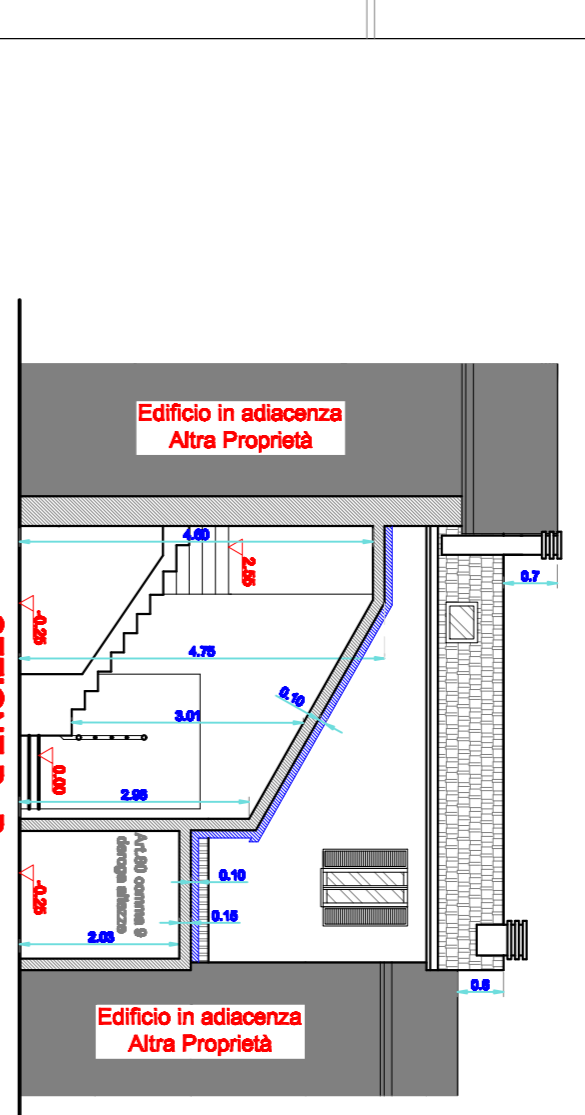
SEZIONE B - B



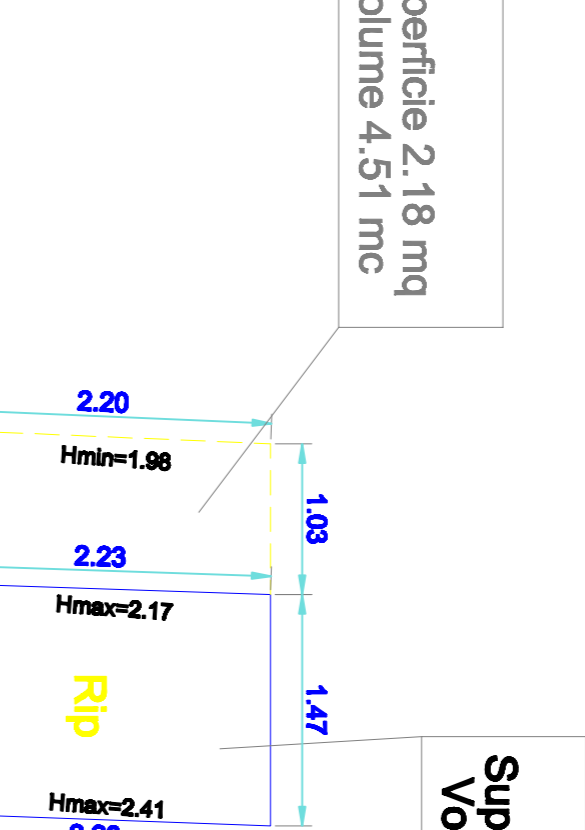
SEZIONE A - A



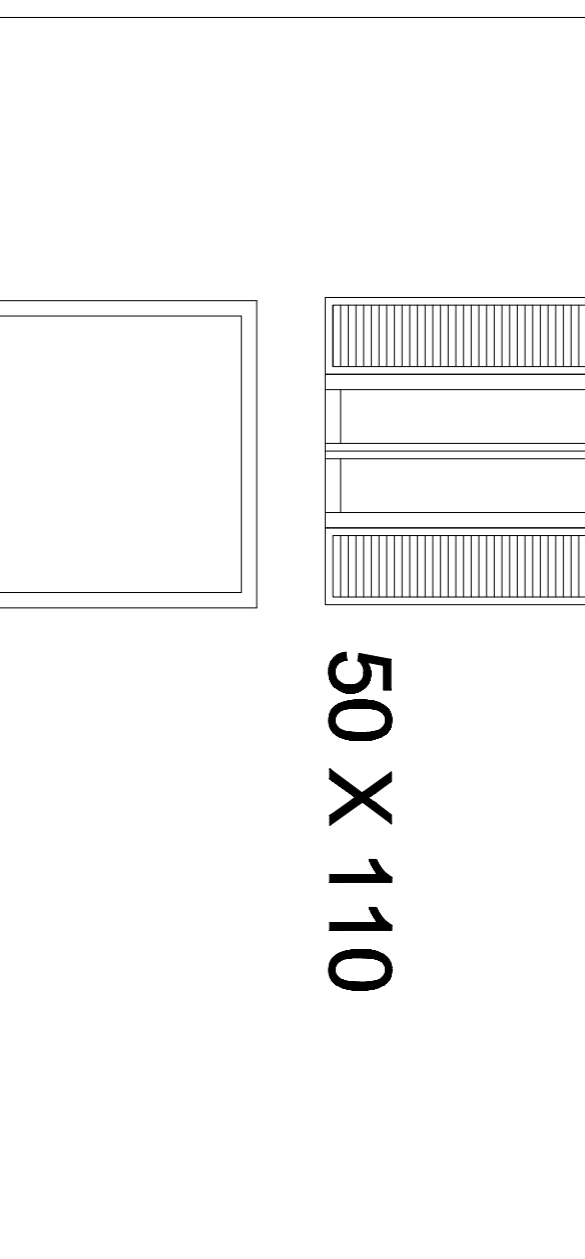
SEZIONE B - B



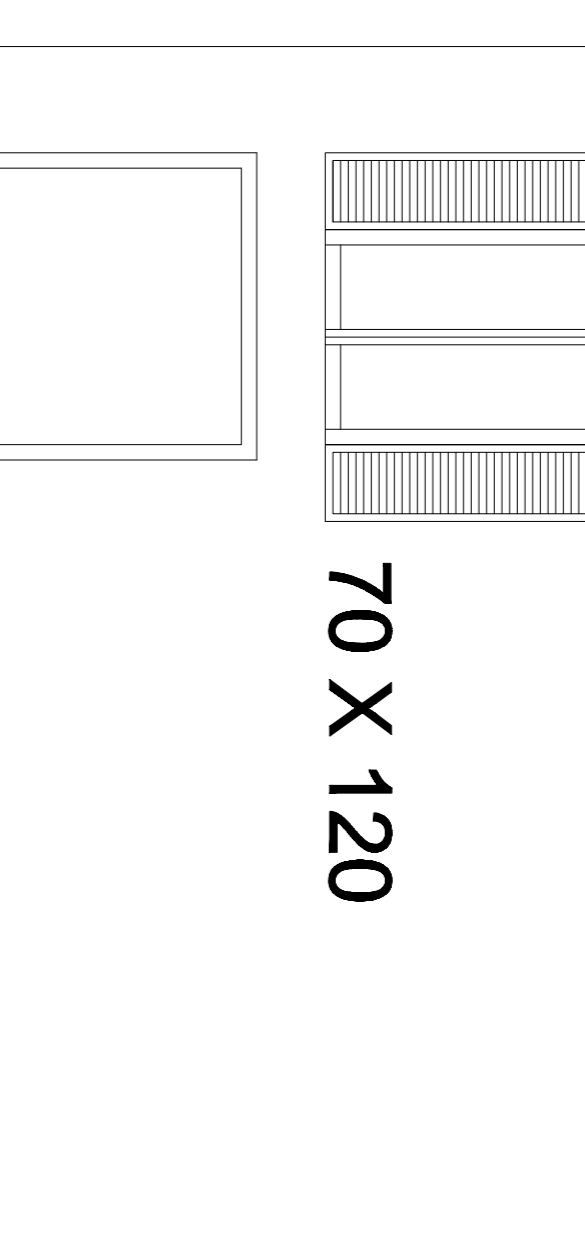
SEZIONE A - A



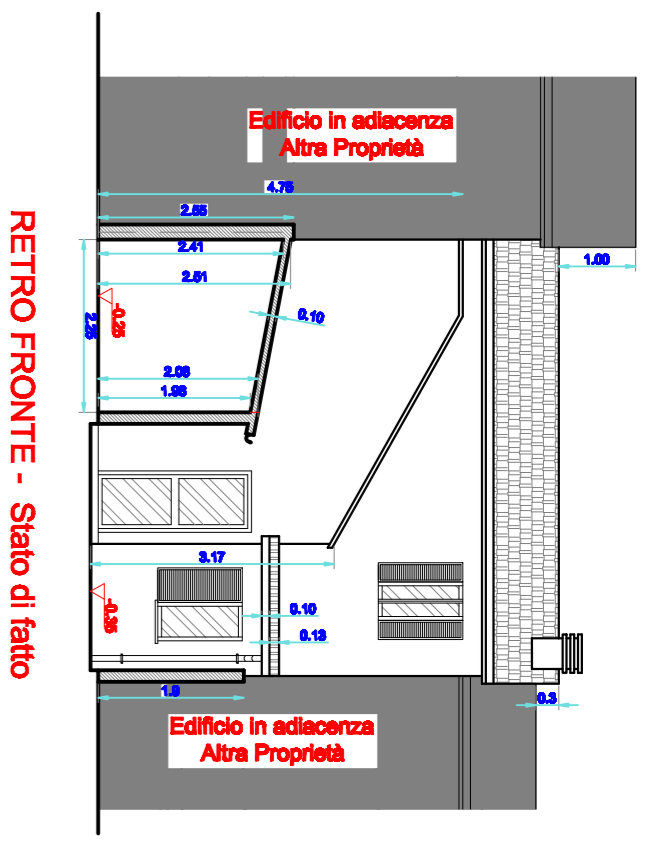
SEZIONE B - B



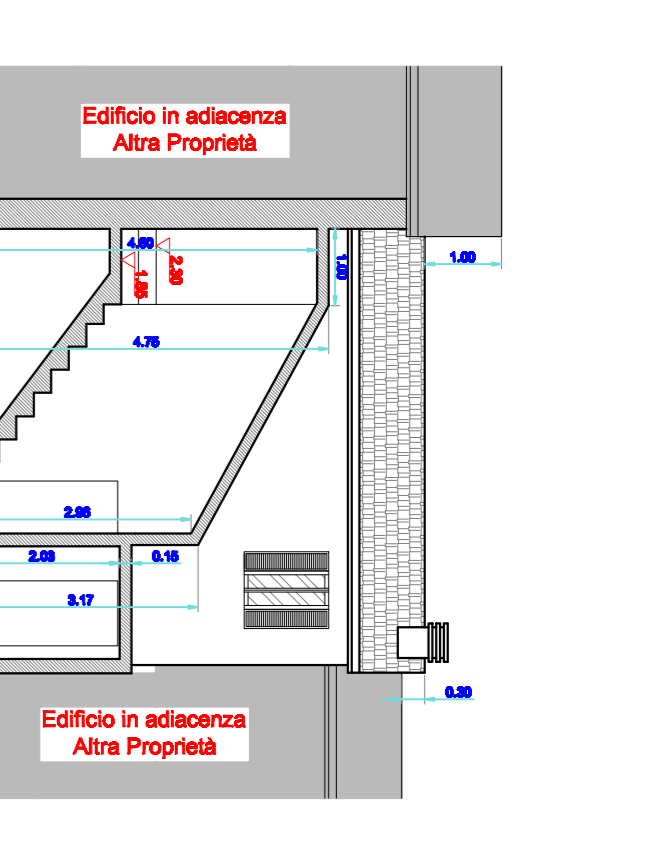
SEZIONE A - A



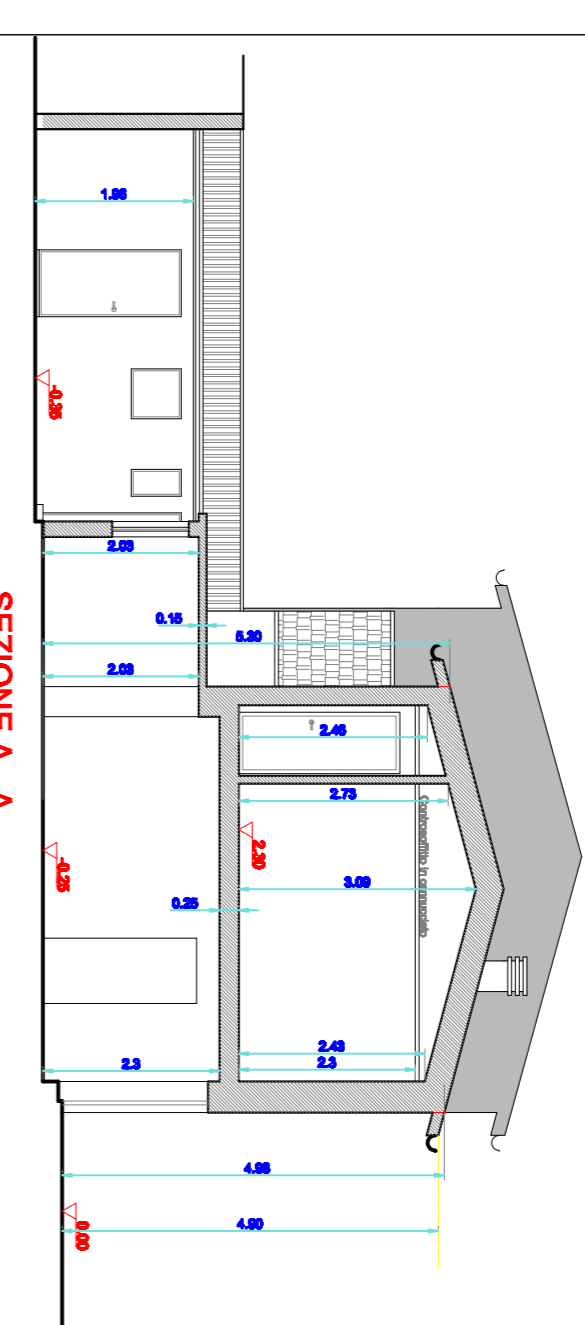
SEZIONE B - B



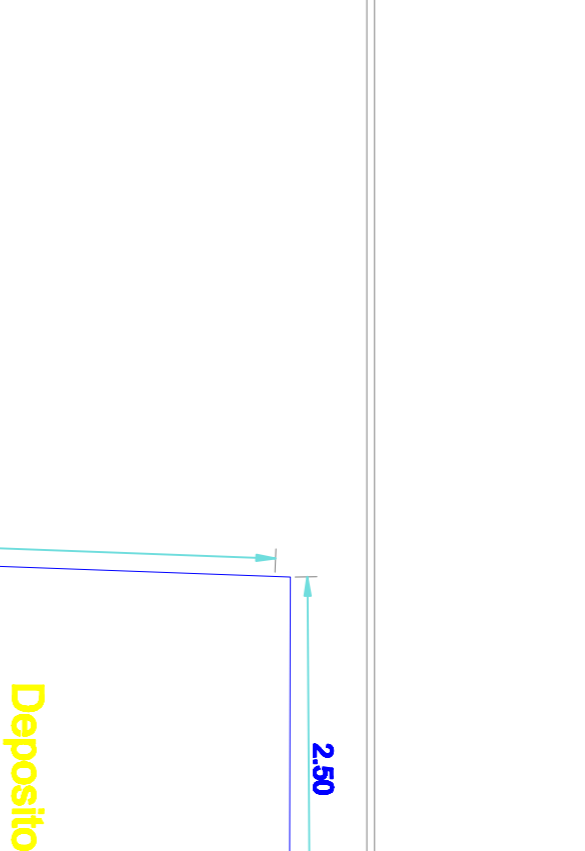
SEZIONE A - A



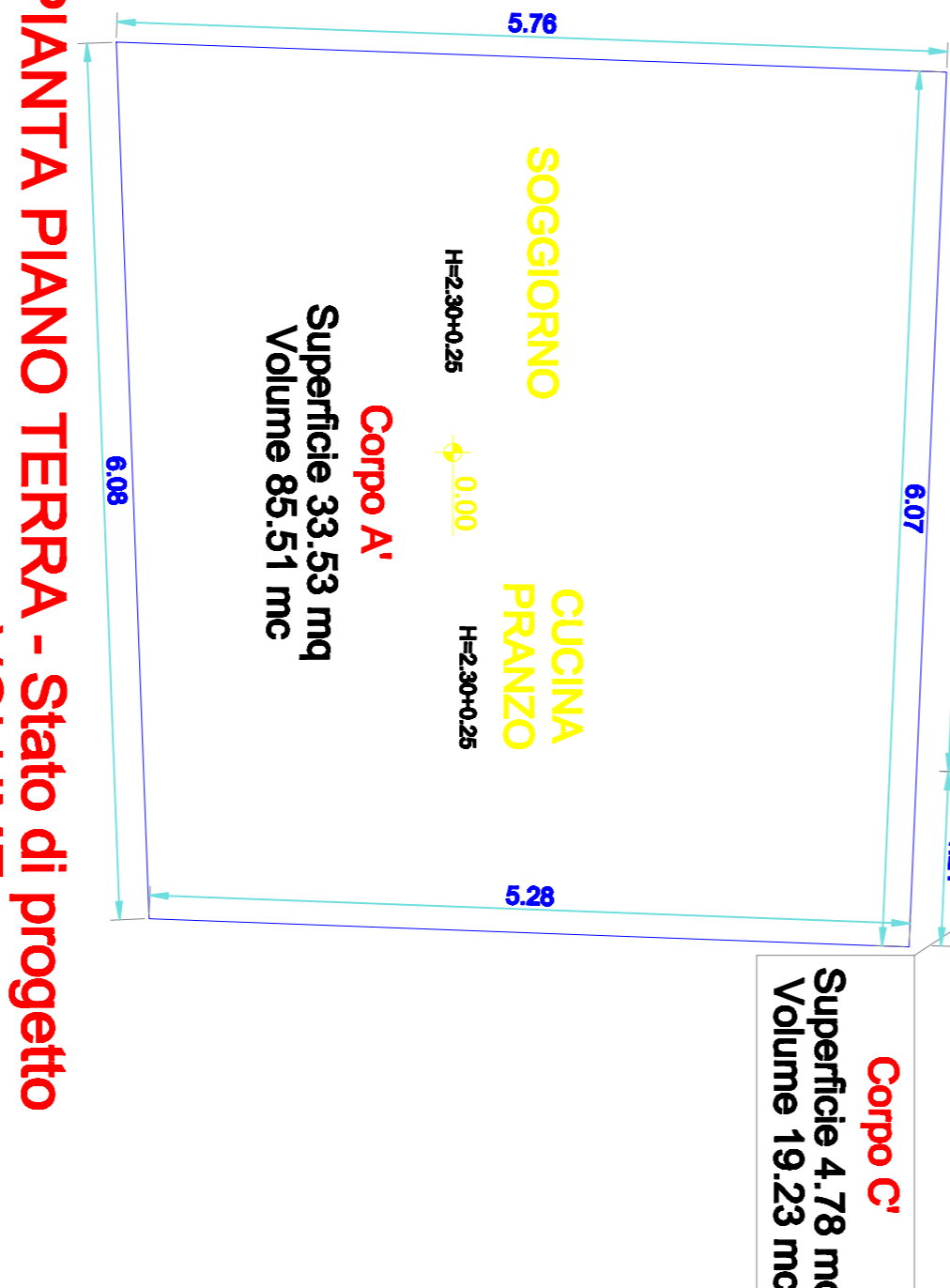
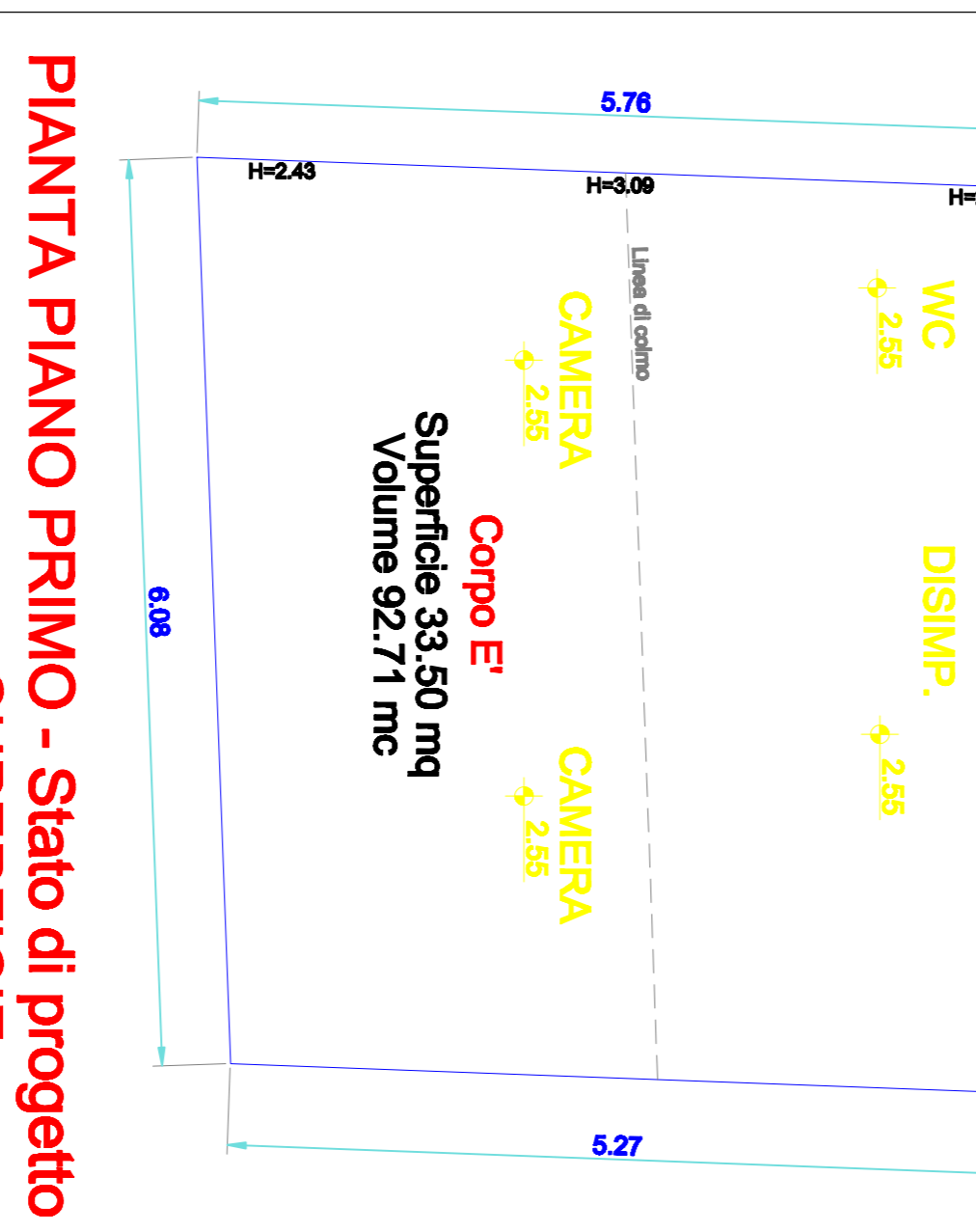
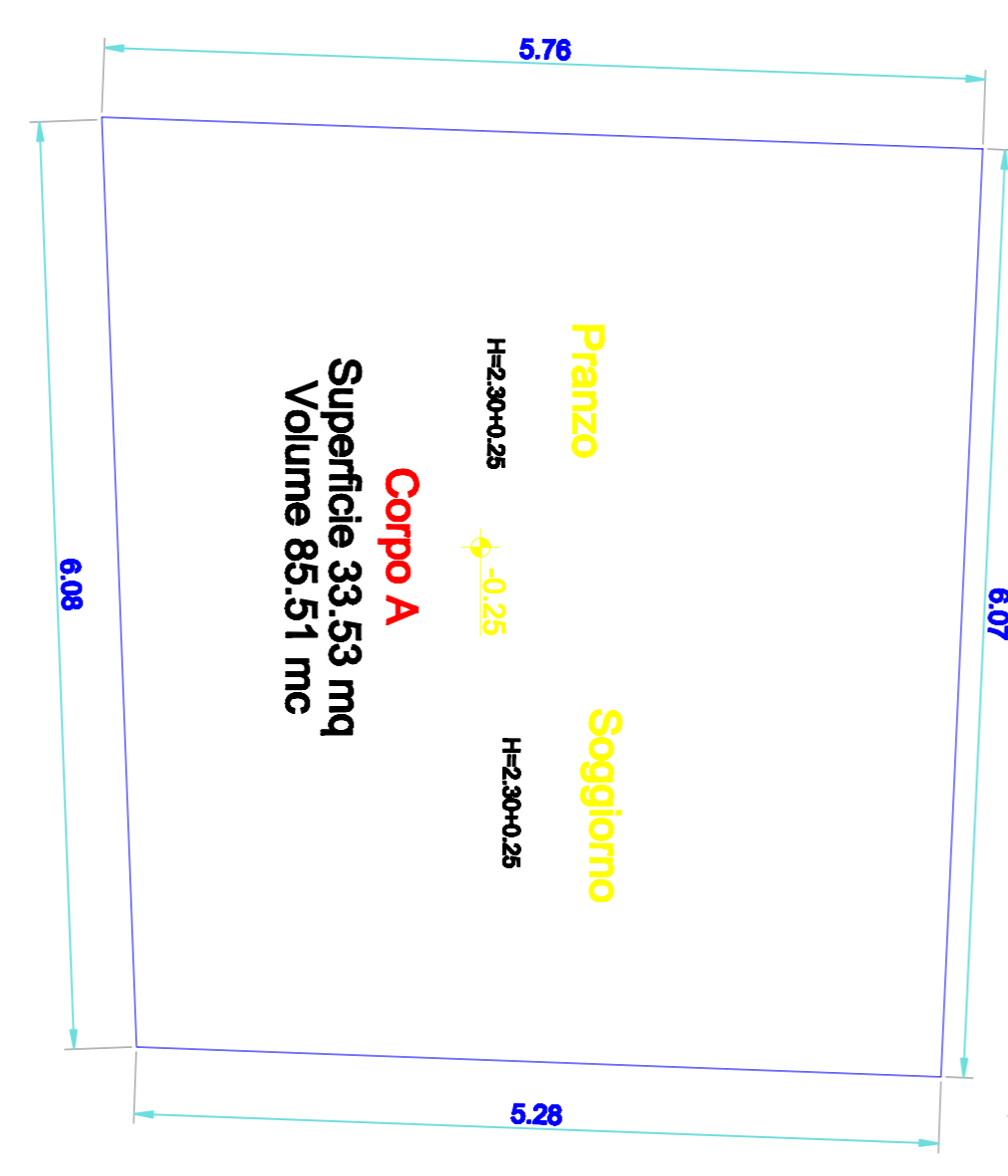
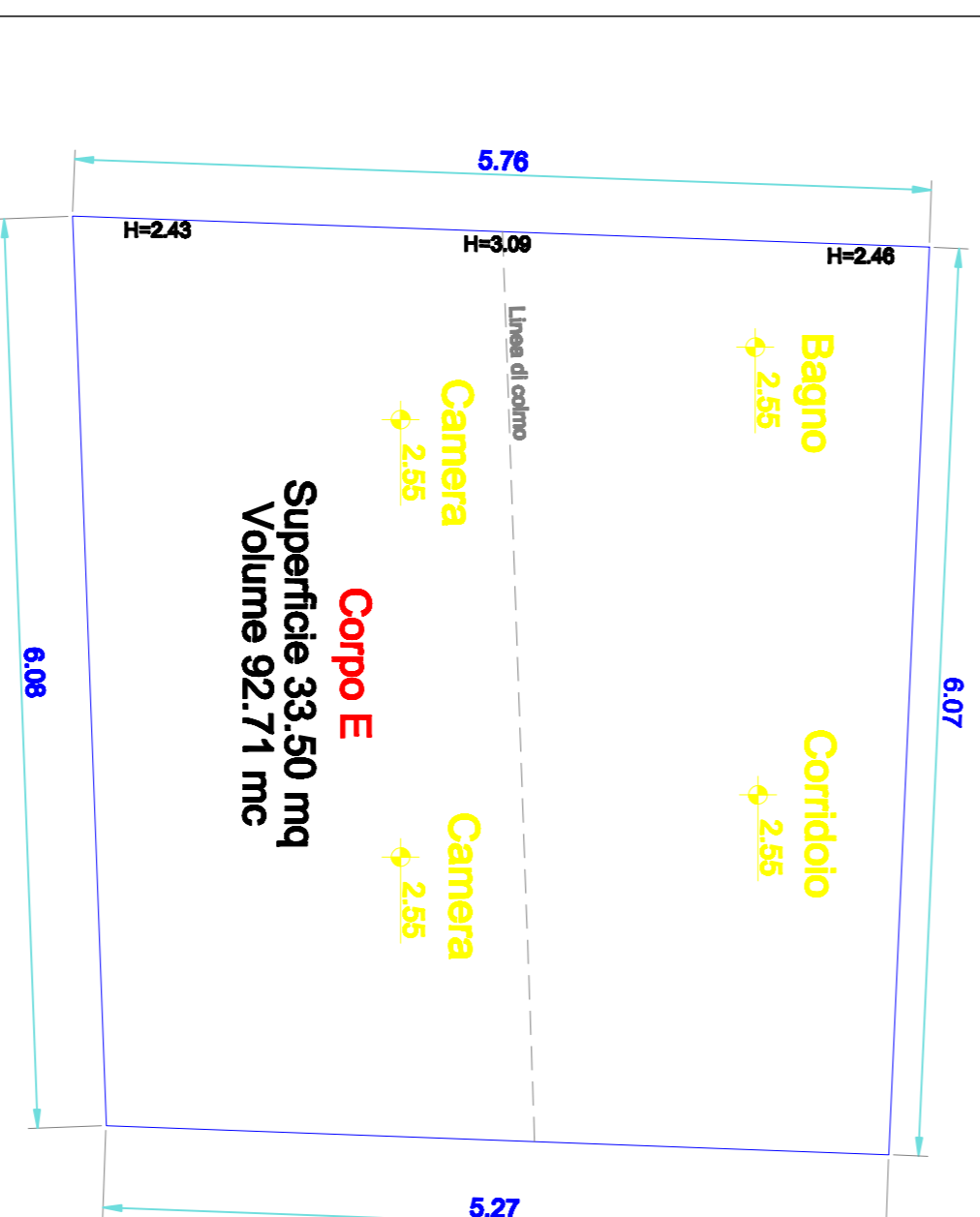
SEZIONE B - B



SEZIONE A - A



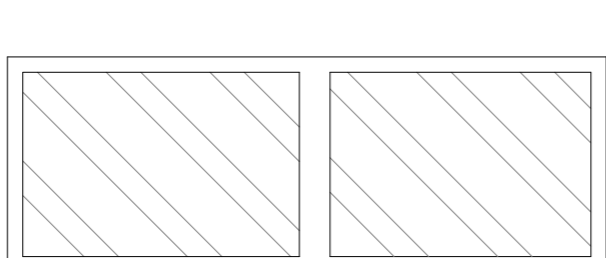
SEZIONE B - B



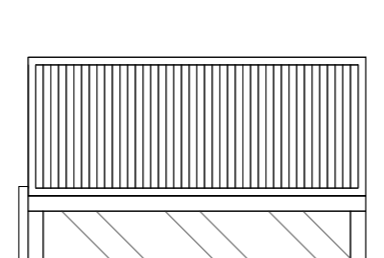
CORPO A	((5,76+5,28)/2) x ((6,07+6,08)/2)	= 33,53 mq	33,53 x 2,55	= 85,51 mc
CORPO B	((2,10+2,09)/2) x ((1,82+1,80)/2)	= 3,79 mq	3,79 x 2,03	= 7,69 mc
CORPO C	(1,14x2,965) + (1,165x1,205)	= 4,78 mq	(1,14x2,965x(2,96+4,80)/2+(4,60x(1,165x1,205)))	= 19,24 mc
CORPO D	2,50 x ((6,26+6,34)/2)	= 15,75 mq	15,75 x (2,41+1,98)/2	= 34,57 mc
CORPO E	((5,76+5,27)/2) x ((6,07+6,08)/2)	= 33,50 mq	33,50 x ((2,43+2,46)/2+3,09)/2	= 92,71 mc
TOTALE		= 88,95 mq		= 239,72 mc

CORPO A'	((5,76+5,28)/2)x((6,08+6,07)/2)	= 33,53 mq	33,53 x 2,55	= 85,51 mc
CORPO B'	((1,82+1,80)/2)x(2,10+2,09)/2)	= 3,79 mq	3,79 x 2,03	= 7,69 mc
CORPO C'	(2,965x1,14) + (1,165x1,205)	= 4,78 mq	(2,965x(1,14x(2,96+4,80)/2)+(1,205x1,165x(4,60))	= 19,23 mc
CORPO D'	2,50x((4,06+4,16)/2)	= 10,27 mq	10,27 x (1,98+2,41)/2	= 22,52 mc
CORPO D''	1,47x((2,23+2,28)/2)	= 3,31 mq	3,31 x (2,17+2,41)/2	= 7,58 mc
CORPO E'	((6,07+6,08)/2)x((5,76+5,27)/2)	= 33,50 mq	33,50 x ((2,43+2,46)/2+3,09)/2	= 92,71mc
CORPO F'	1,56x0,56+0,20x1,76	= 1,85 mq	1,85 x 2,40	= 4,44 mc
TOTALE		= 91,03 mq		= 239,68 mc

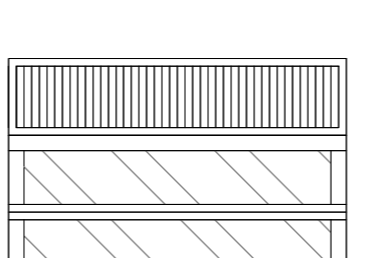
ACCESSORI



70 X 195

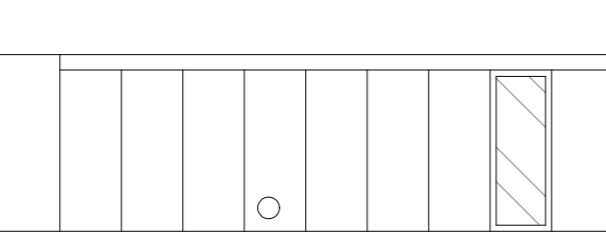


50 X 110

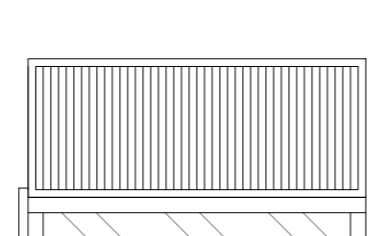


50 X 110

ACCESSORI



120 X 190



50 X 110

bagno

40 X 40

bagno

60 X 190

deposito

80 X 190

portafinestra rip.1

90 X 190

porta rip.2