

# COMUNE DI FANO

## PIANO ATTUATIVO SULL'AREA ST2\_P11 "COMPARTO RESIDENZIALE PALEOTTA"

### PROPRIETA':

Adanti Maria Letizia; Adanti Roberto;  
Adanti Paolo; Gili Ivana; Adanti Lea Grazia;  
Pasqualucci Forestieri Rinalducci Alberto Maria  
Pasqualucci Forestieri Rinalducci Maria Cristina  
Sant'Irene Immobiliare s.r.l.; Solazzi Giovanni  
Solazzi Clarissa e altri.

Foglio 26 mappali 57 parte - 1404-1445-1783-1784-1788-1789- 2129

TAV A 06

BLOCCHI EDILIZI  
CALCOLO SUL

settembre 2013

PROGETTO URBANISTICO

Arch. ROBERTI GIORGIO

PROGETTO IMPIANTI TECNOLOGICI

Ing. MONTANARI ALBERTO

INDAGINE GEOLOGICA  
RILIEVO

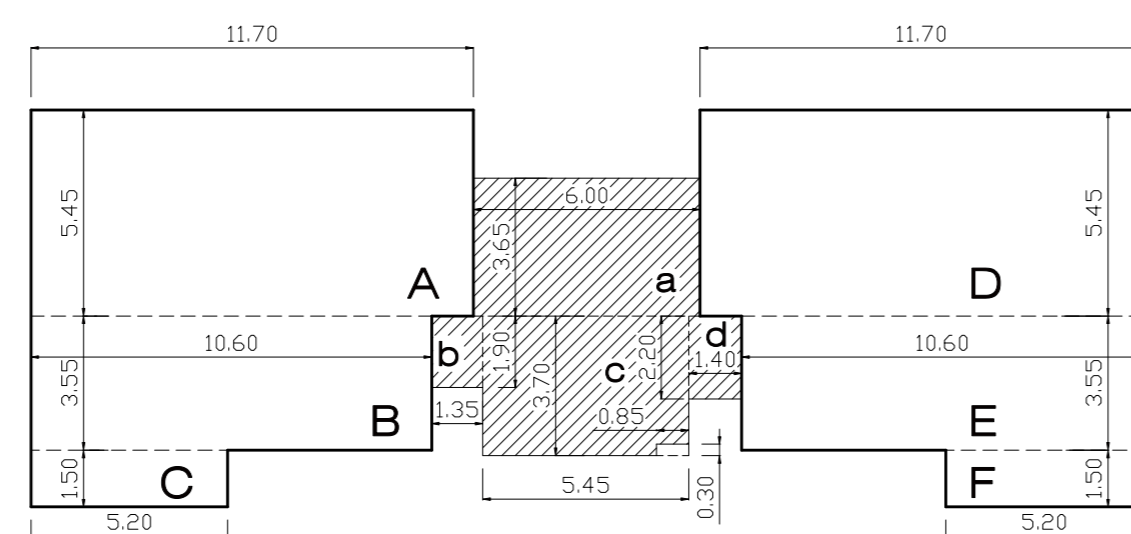
Geol. MONTANARI GIOVANNI  
Geom. COCON WALTER

### SUL TOTALE

BLOCCO A1 mq. 711,50  
BLOCCO A2.1 mq. 318,87  
BLOCCO A2.2 mq. 318,87  
BLOCCO A3 mq. 144,28  
BLOCCO A4 mq. 481,48  
tot mq. 1.975,00

SUL CONDOMINIALE mq. 109,48

### BLOCCO A1



#### Piano terra

A 11,70 X 5,45 = mq. 63,76  
B 10,60 X 3,55 = mq. 37,63  
A 5,20 X 1,50 = mq. 7,80  
D 11,70 X 5,45 = mq. 63,76  
E 10,60 X 3,55 = mq. 37,63  
F 5,20 X 1,50 = mq. 7,80

mq. 218,38

#### SUL condominiale

A 6,00 X 3,65 = mq. 21,90  
B 1,90 X 1,35 = mq. 2,56  
C 5,45 X 3,70 = mq. 20,16  
D 1,40 X 2,20 = mq. 3,08  
mq. 47,70

#### Primo Piano

A 10,60 X 9,00 = mq. 95,40  
B 7,50 X 1,50 = mq. 11,25  
C 8,20 X 5,45 -  
- 2,00 X 1,60 = mq. 41,49  
D 10,60 X 9,00 = mq. 95,40  
E 7,50 X 1,50 = mq. 11,25  
mq. 254,79

#### SUL condominiale

a 6,85 X 3,70  
- 0,15 X 1,40 = mq. 25,13  
b 1,90 X 1,35 = mq. 2,56  
c 2,00 X 1,60 = mq. 3,20  
mq. 30,89

#### Secondo Piano

A 19,30 X 5,00 = mq. 96,50  
B 5,50 X 10,60 = mq. 58,30  
C 4,15 X 1,50 = mq. 6,22  
D 8,20 X 1,95 -  
- 2,00 X 1,60 = mq. 12,79  
E 10,60 X 5,50 = mq. 58,30  
F 4,15 X 1,50 = mq. 6,22  
mq. 238,33

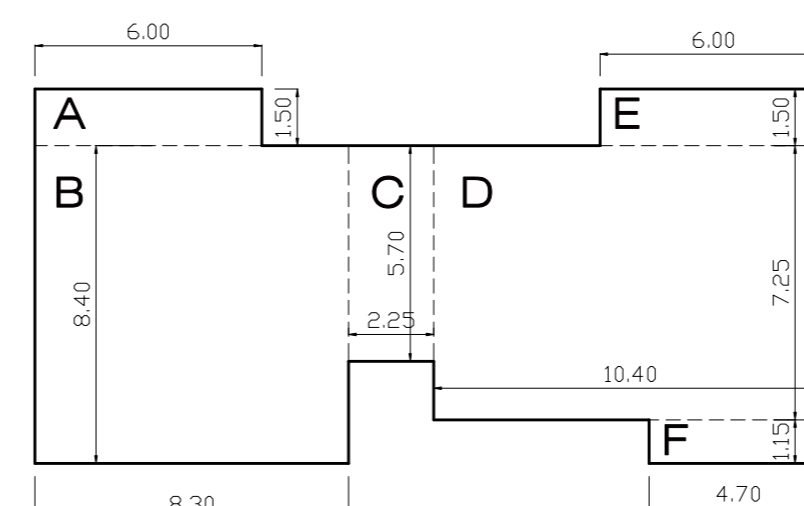
#### SUL condominiale

A 6,85 X 3,70  
- 0,15 X 1,40 = mq. 25,13  
B 1,90 X 1,35 = mq. 2,56  
C 2,00 X 1,60 = mq. 3,20  
mq. 30,89

SUL condominiale mq. 47,70+30,89+30,89= mq. 109,48

SUL mq. 218,38 + mq. 254,79 + mq. 238,33 = mq. 711,50

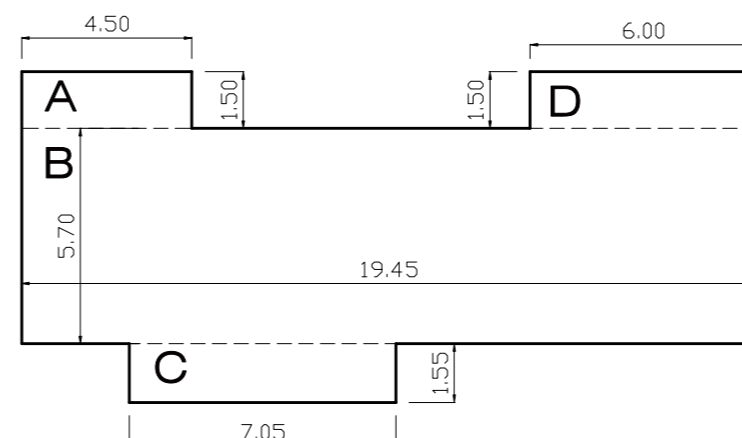
### BLOCCO A2.1



#### Piano Terra

A 6,00 X 1,50 = mq. 9,00  
B 8,30 X 8,40 = mq. 69,72  
C 5,70 X 2,25 = mq. 12,82  
D 10,40 X 7,25 = mq. 75,40  
E 6,00 X 1,50 = mq. 9,00  
F 4,70 X 1,15 = mq. 5,40

mq. 181,34

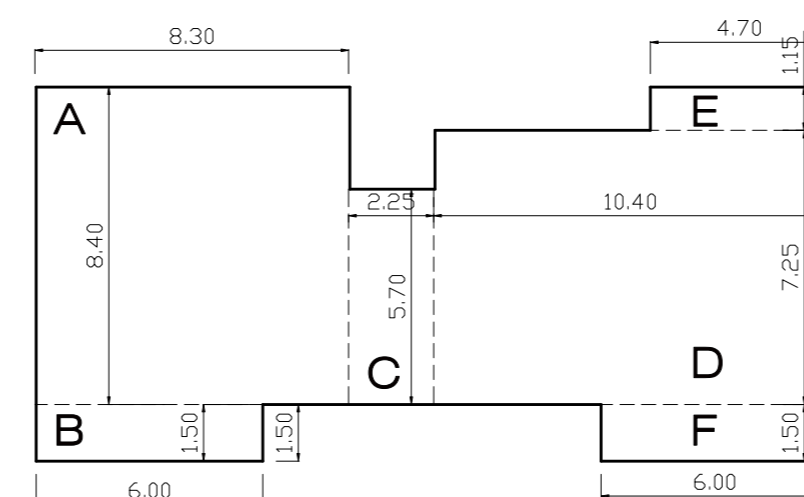


#### Piano Primo

A 4,50 X 1,50 = mq. 6,75  
B 19,45 X 5,70 = mq. 110,86  
C 7,05 X 1,55 = mq. 10,92  
D 6,00 X 1,50 = mq. 9,00  
mq. 137,53

mq. 181,34 + mq. 137,53 = mq. 318,87

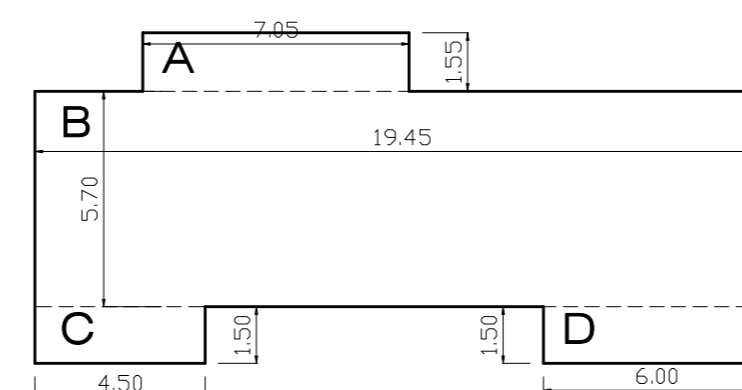
### BLOCCO A2.2



#### Piano Terra

A 8,30 X 8,40 = mq. 69,72  
B 6,00 X 1,50 = mq. 9,00  
C 2,25 X 5,70 = mq. 12,82  
D 10,40 X 7,25 = mq. 75,40  
E 4,70 X 1,15 = mq. 5,40  
F 6,00 X 1,50 = mq. 9,00

mq. 181,34

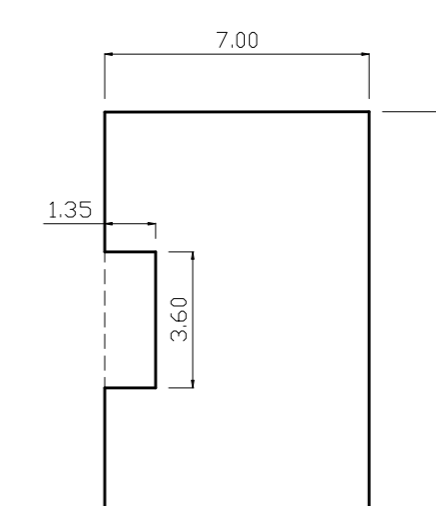


#### Piano Primo

A 7,05 X 1,55 = mq. 10,92  
B 19,45 X 5,70 = mq. 110,86  
C 4,50 X 1,50 = mq. 6,75  
D 6,00 X 1,50 = mq. 9,00  
mq. 137,53

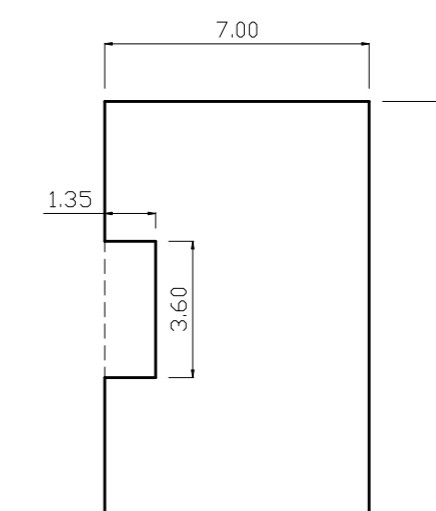
SUL mq. 181,34 + mq. 137,53 = mq. 318,87

### BLOCCO A3



#### Piano Terra

A 7,00 X 11,00  
- 1,35 X 3,60 = mq. 72,14

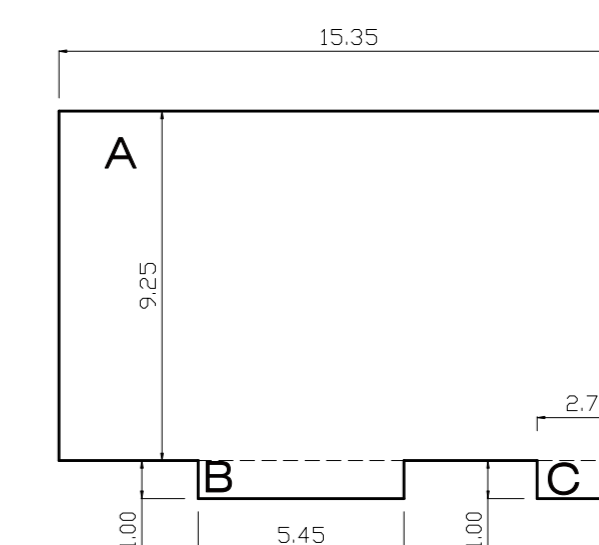


#### Primo Piano

A 7,00 X 11,00  
- 1,35 X 3,60 = mq. 72,14

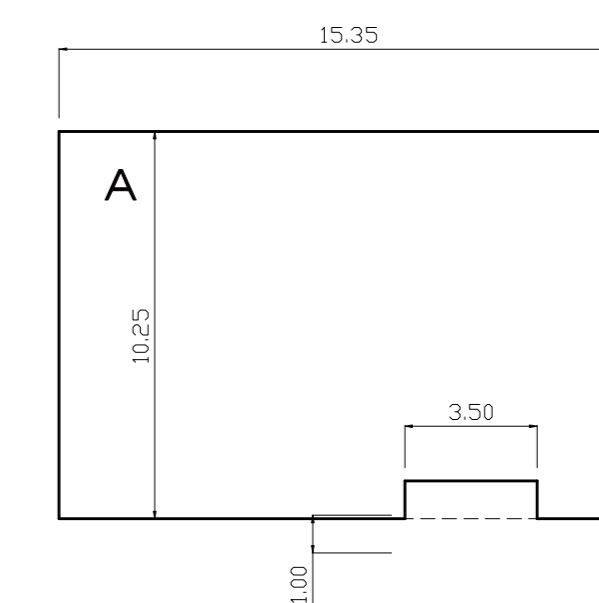
mq. 72,14 + mq. 72,14 = mq. 144,28

### BLOCCO A4



#### Piano Terra

A 15,35 X 9,25 = mq. 141,99  
B 5,45 X 1,00 = mq. 5,45  
C 2,70 X 1,00 = mq. 2,70  
D 9,00 X 10,25 -  
3,50 X 1,00 = mq. 88,75  
mq. 238,89



#### Piano Primo

A 15,35 X 10,25 -  
- 1,00 X 3,50 = mq. 153,87  
B 9,00 X 10,25 -  
- 1,00 X 3,50 = mq. 88,75  
mq. 242,59

SUL mq. 238,89 + mq. 242,59 = mq. 481,48