

# IRONIA E MUSICA SALVERANNO IL MONDO

*Una piccola fabbrica per progettare il futuro*



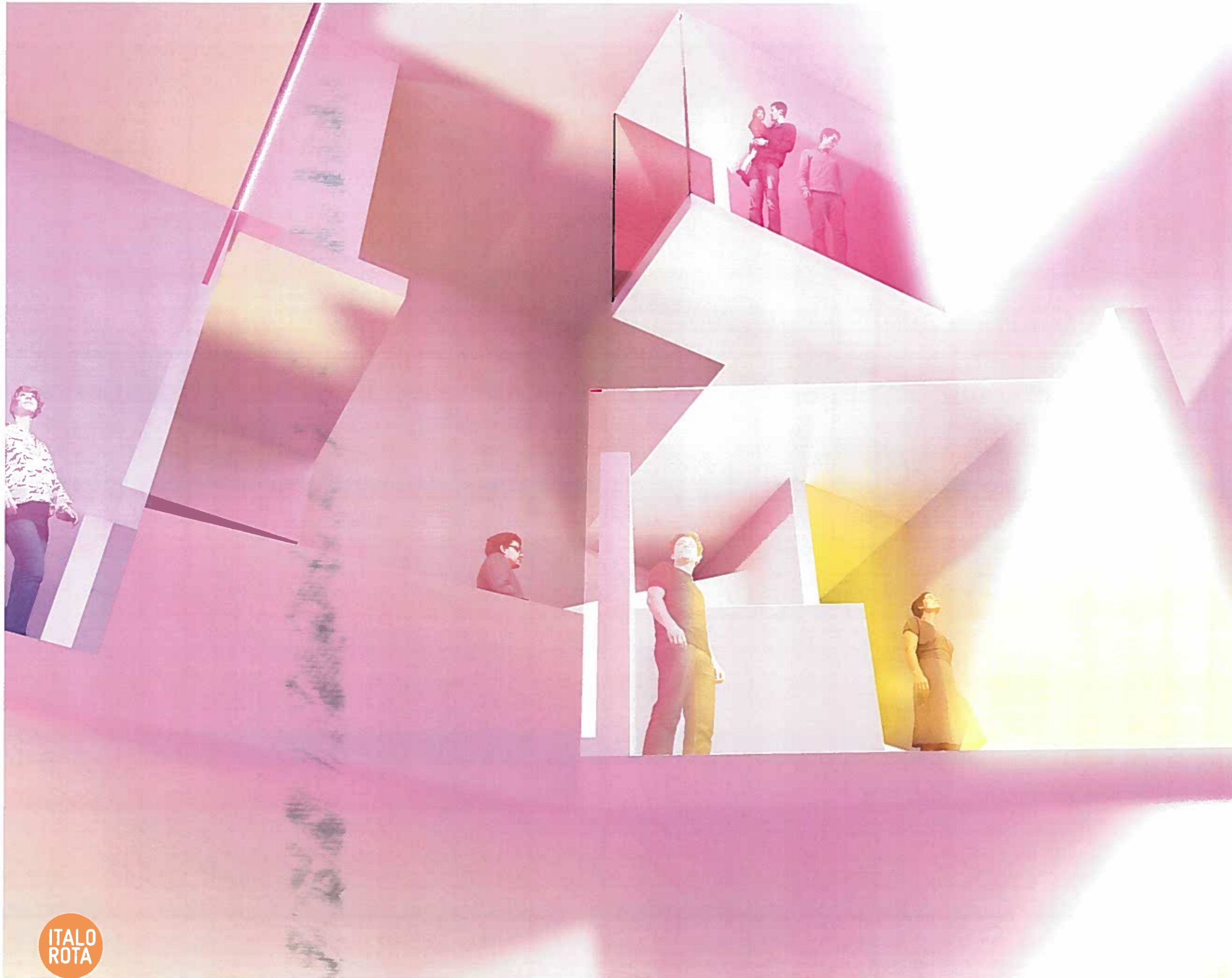
# LOST IN TRANSITION

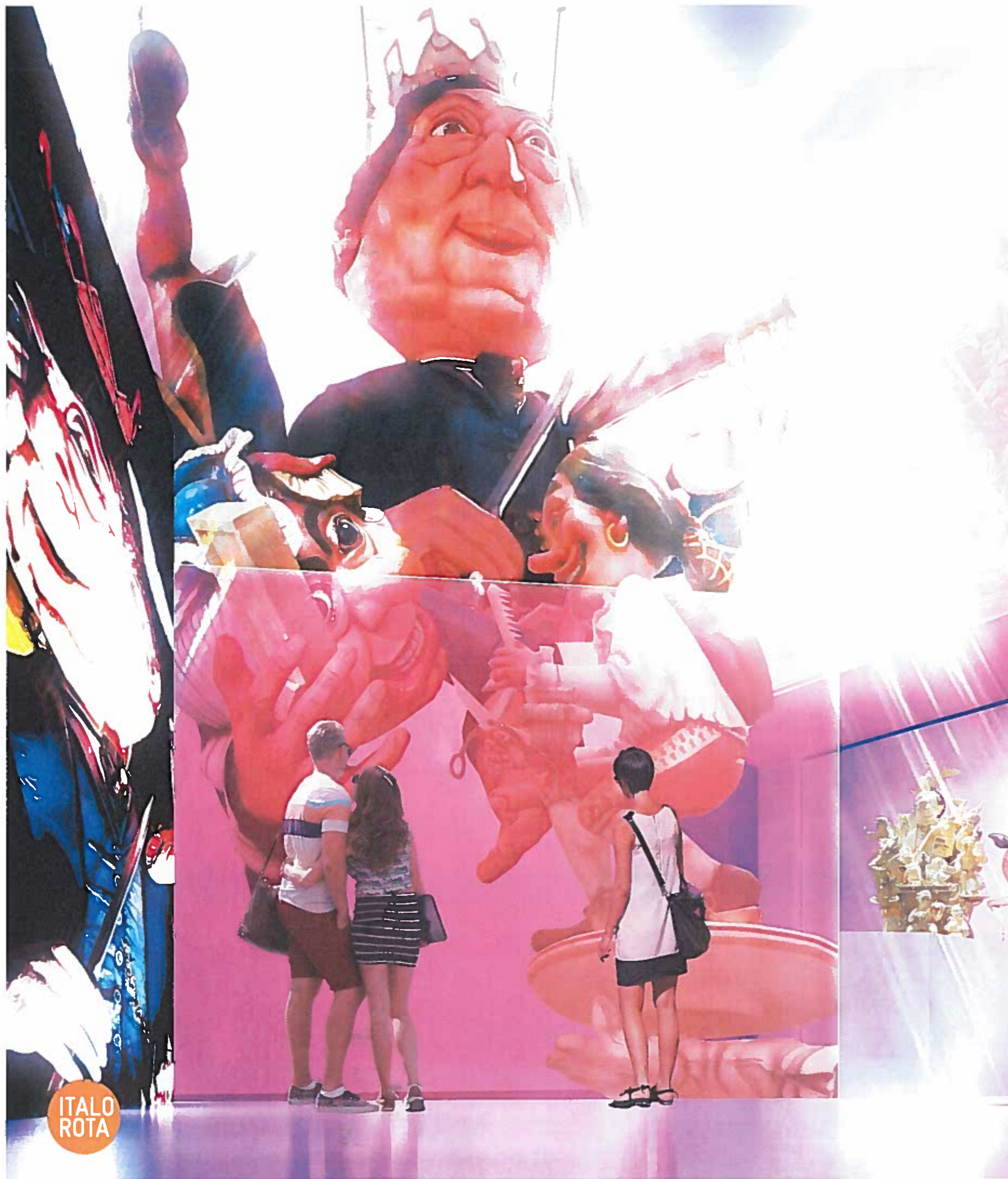


# NUOVO SANT'ARCANGELO

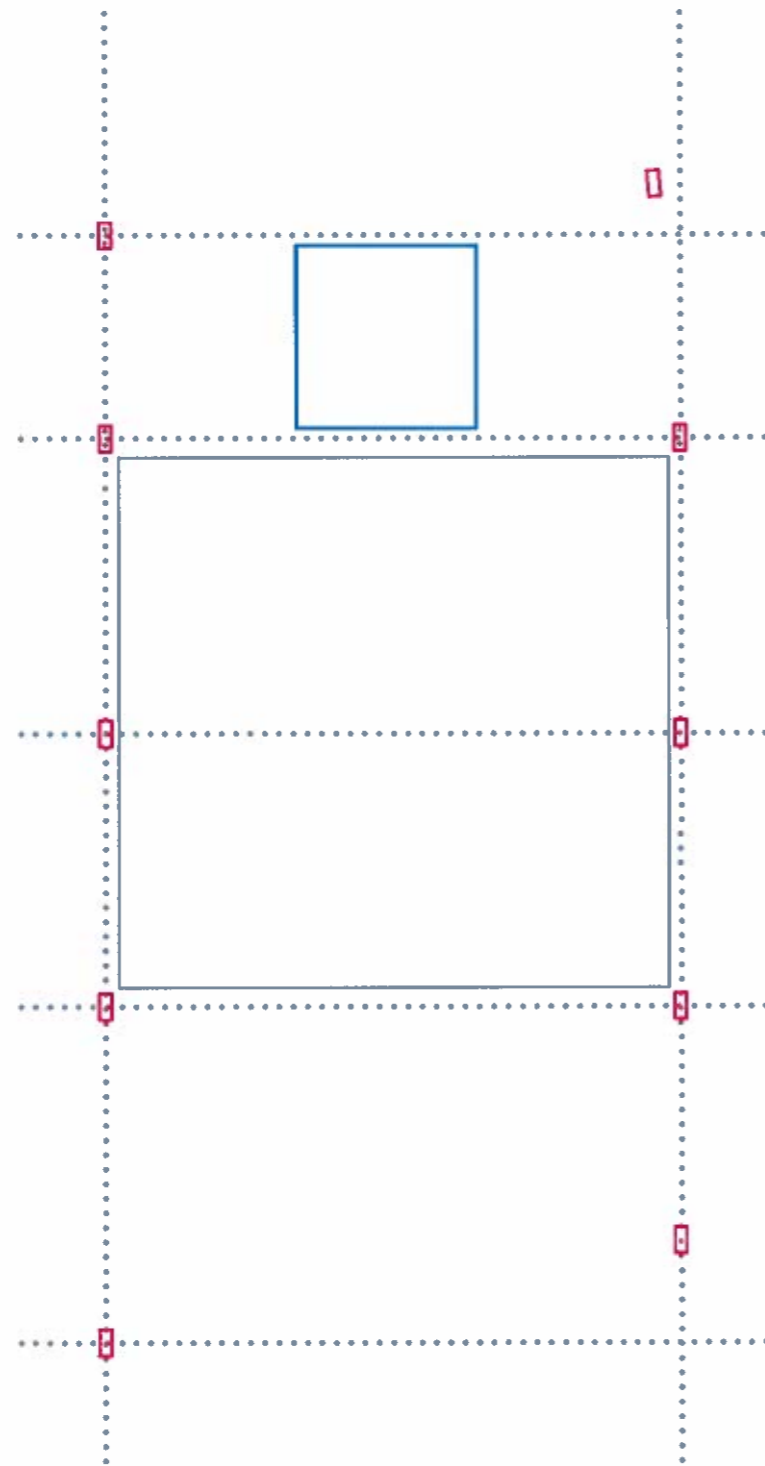


“ My body is a joystick ”

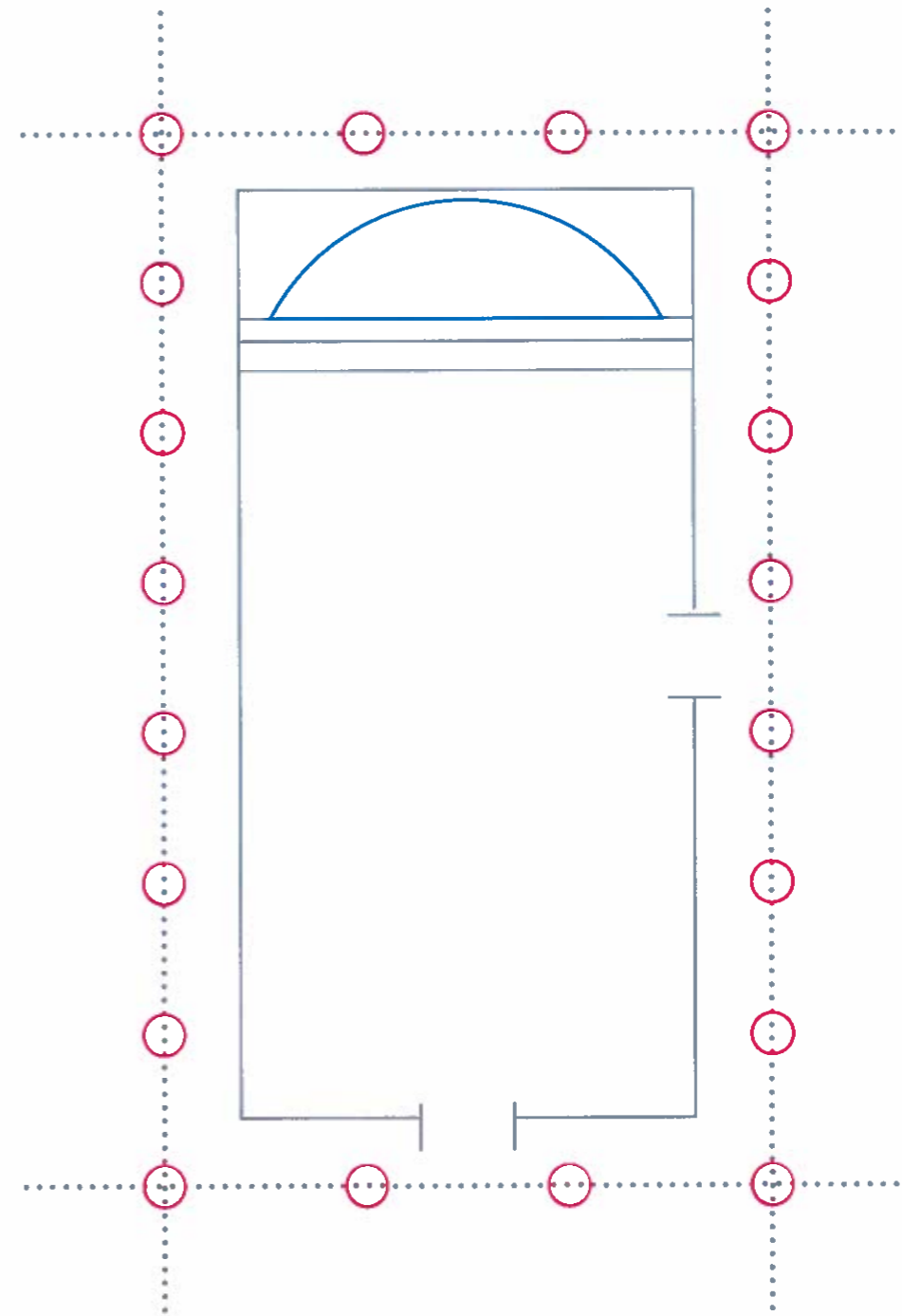




# LOST IN TRANSLATION



MUSEO DEL  
CARNEVALE

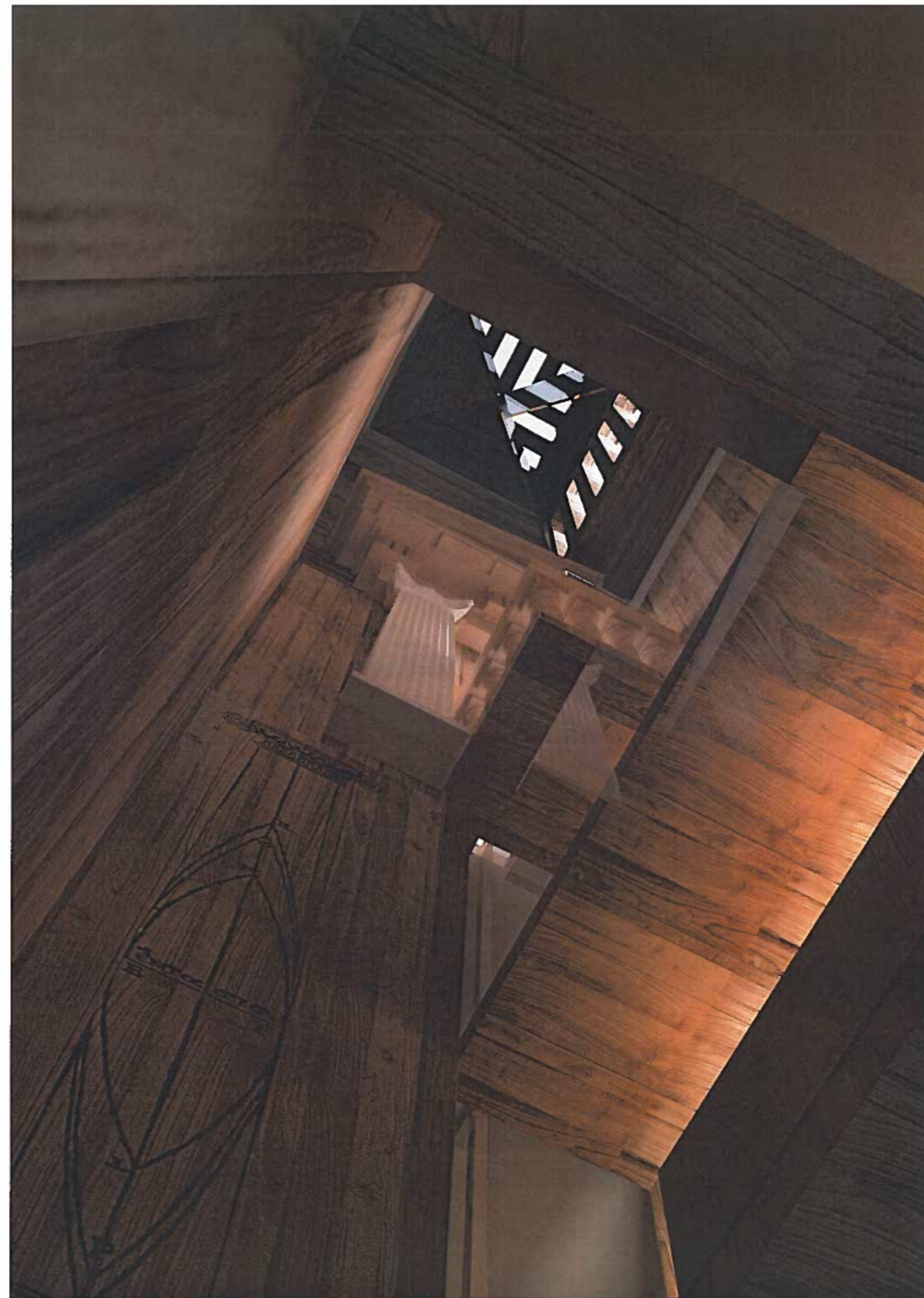
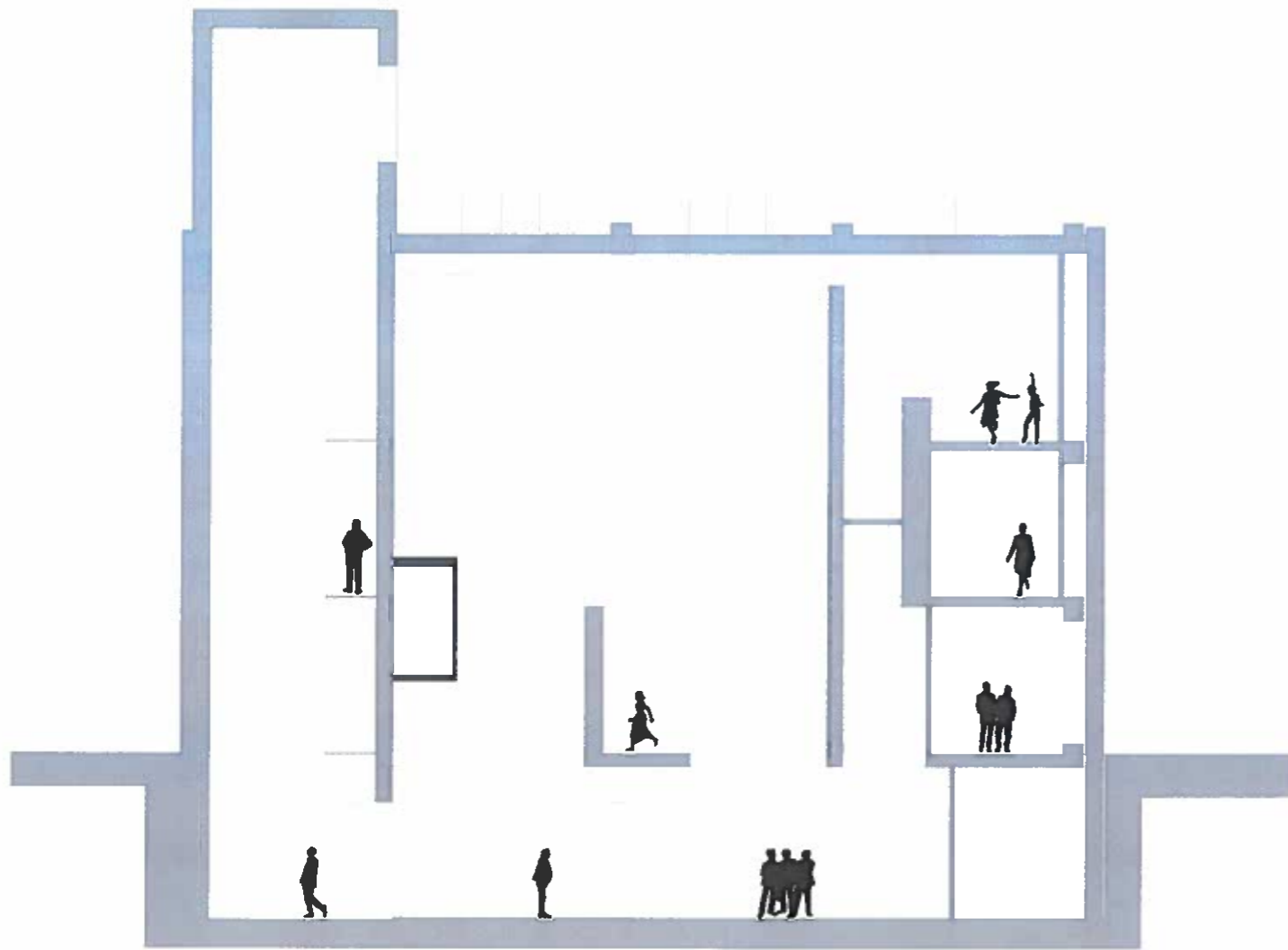


BASILICA DI FANO  
DI VITRUVIO

# Vitruvium enigma

## *La scenografia vitruviana*

Nel suo trattato Vitruvio definisce la scenografia come lo schizzo della facciata e dei lati in scorcio con la convergenza di tutte le linee del centro: “la geometria poi offre molti aiuti all’architettura ed innanzitutto insegna l’uso della riga e del compasso, mediante i quali si possono disegnare con grande facilità nel piano piante di edifici, schizzi di livellamento e linee perpendicolari”.





ITALO  
ROTA



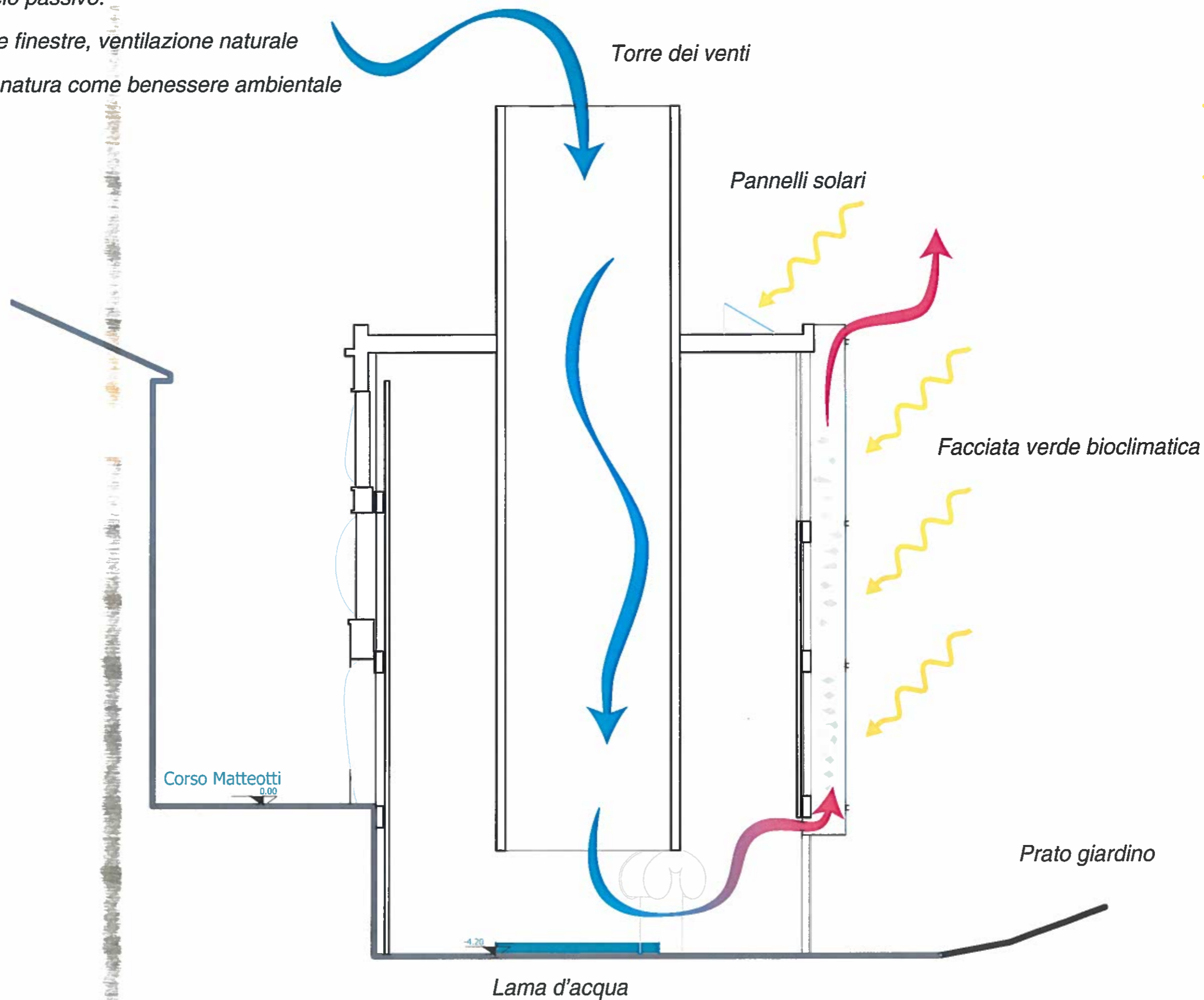


# Buon senso e vecchie astuzie

Questo è un edificio passivo:

muri spessi, poche finestre, ventilazione naturale

Gli elementi della natura come benessere ambientale

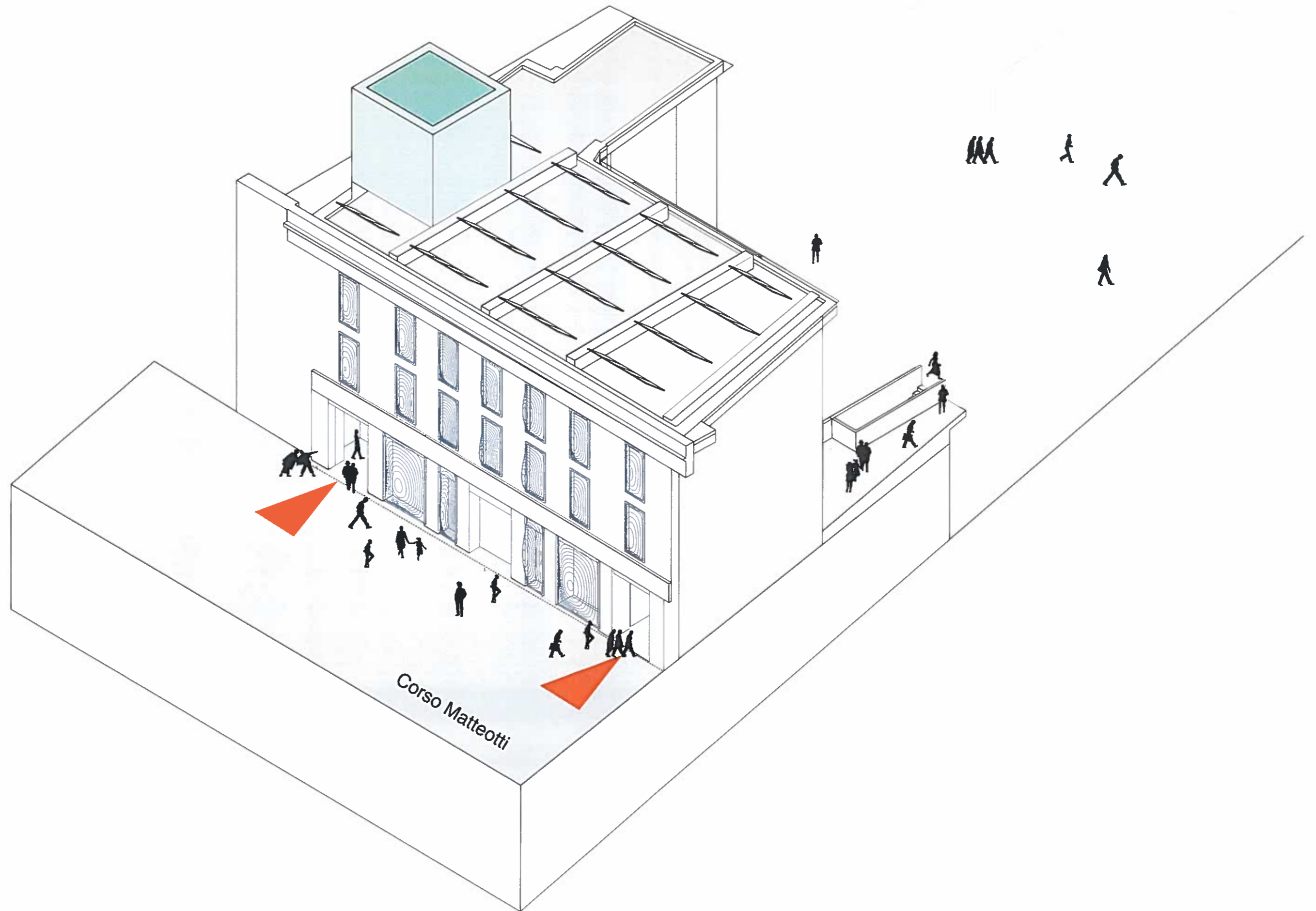


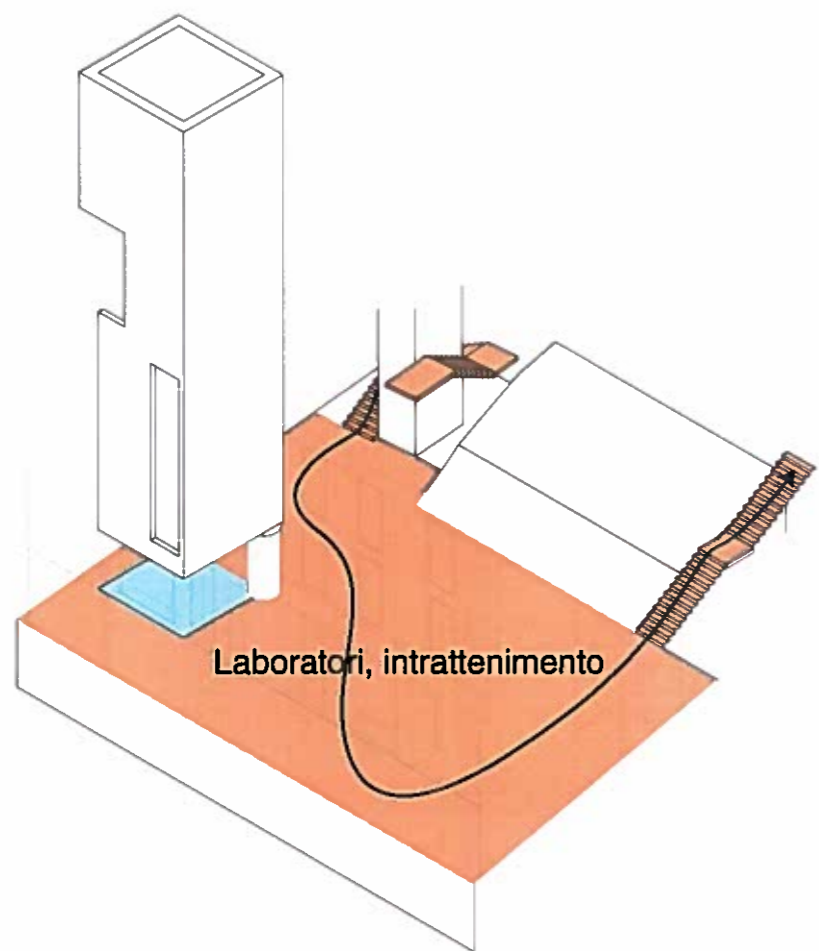
La luce ti accompagna in un viaggio emozionale



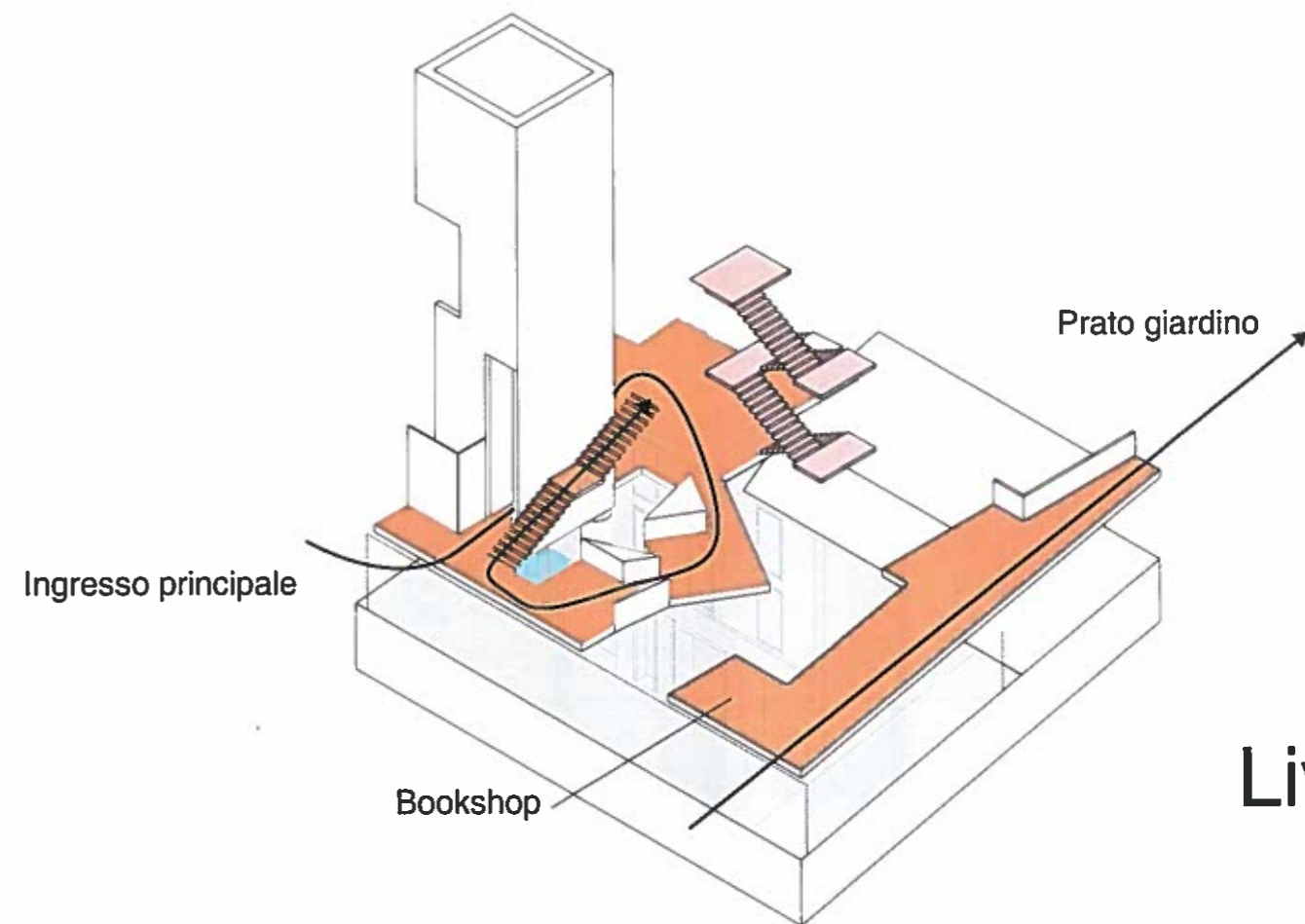


# Vista d'assieme da Corso Matteotti

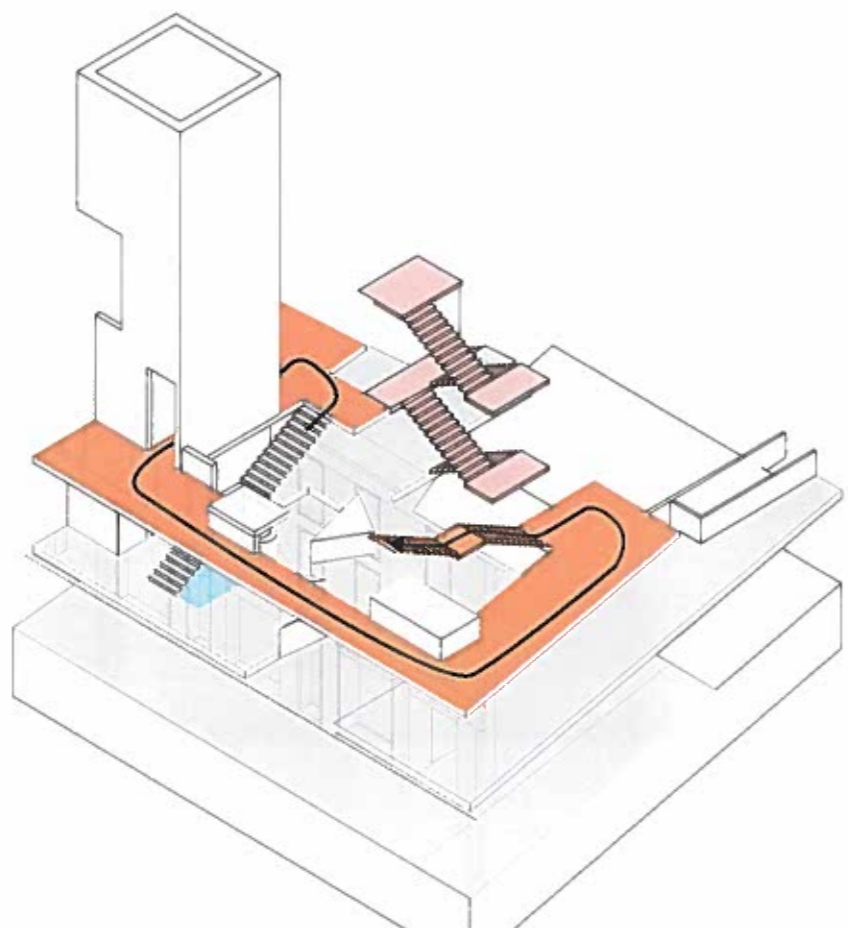




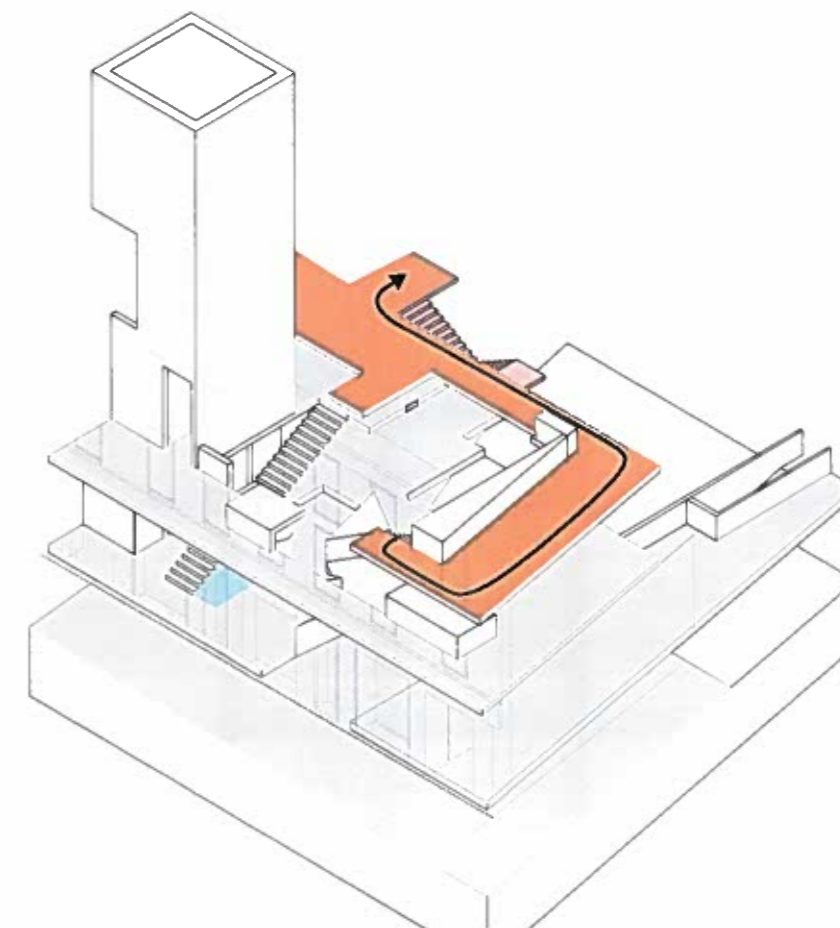
Liv. -1



Liv. 0



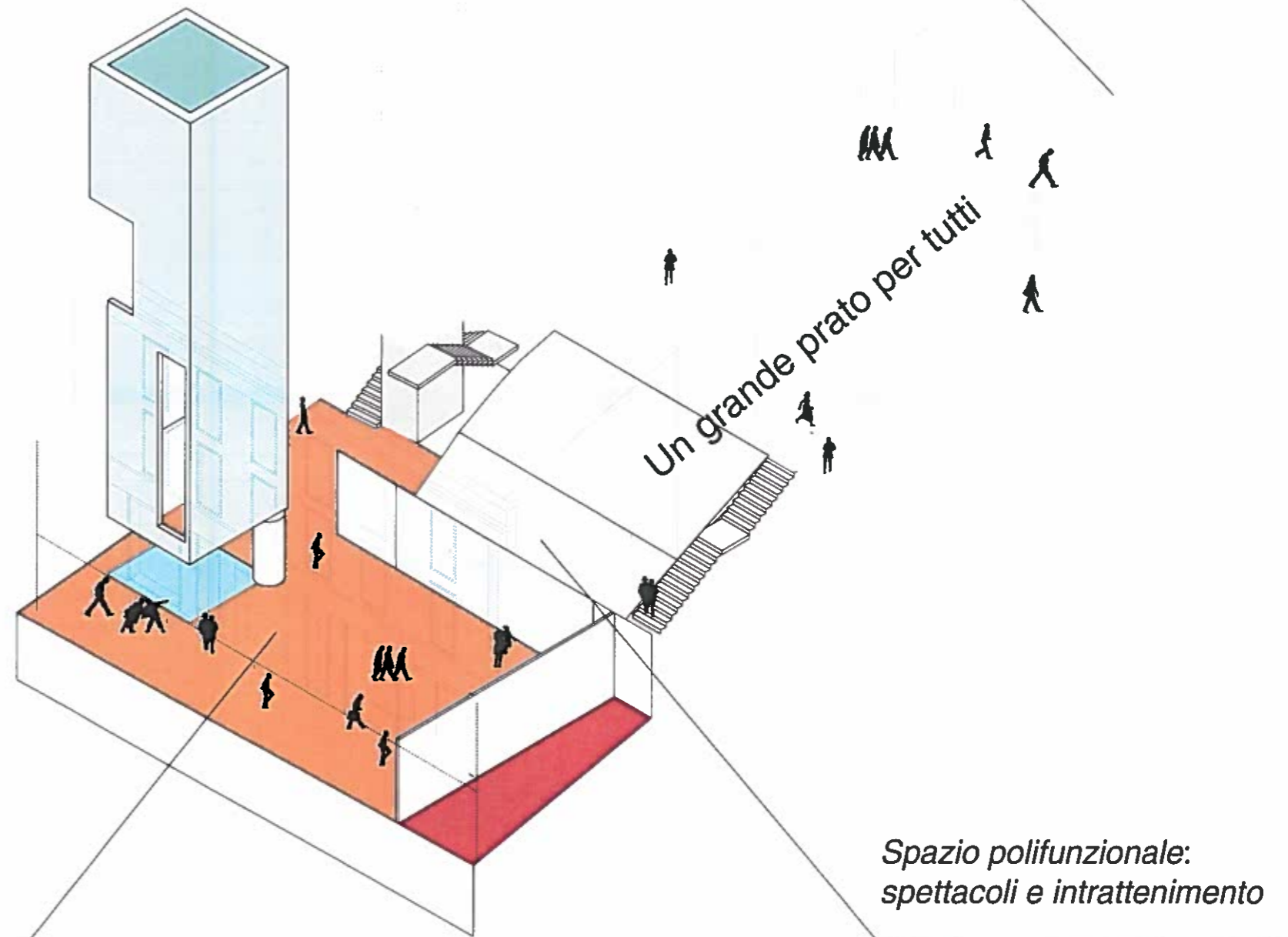
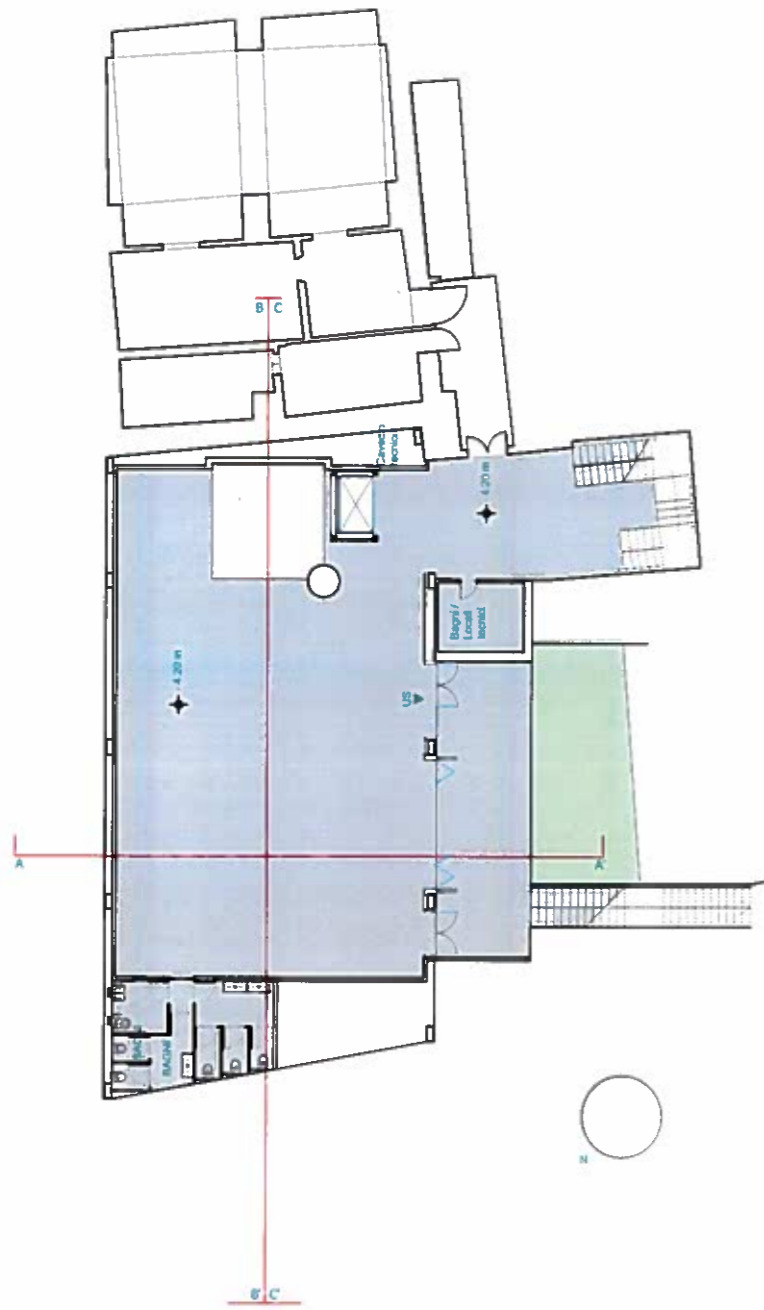
Liv. 1



Liv. 2

# Pianta e assonometria livello -1

Accademia e club del jazz:  
ristoro e spettacolo



Spazio polifunzionale:  
laboratori ed esposizioni



Spazio polifunzionale:  
spettacoli e intrattenimento



# RICICLARE - *costruiamo insieme un carro per il futuro tra arte, robotica e meccatronica*

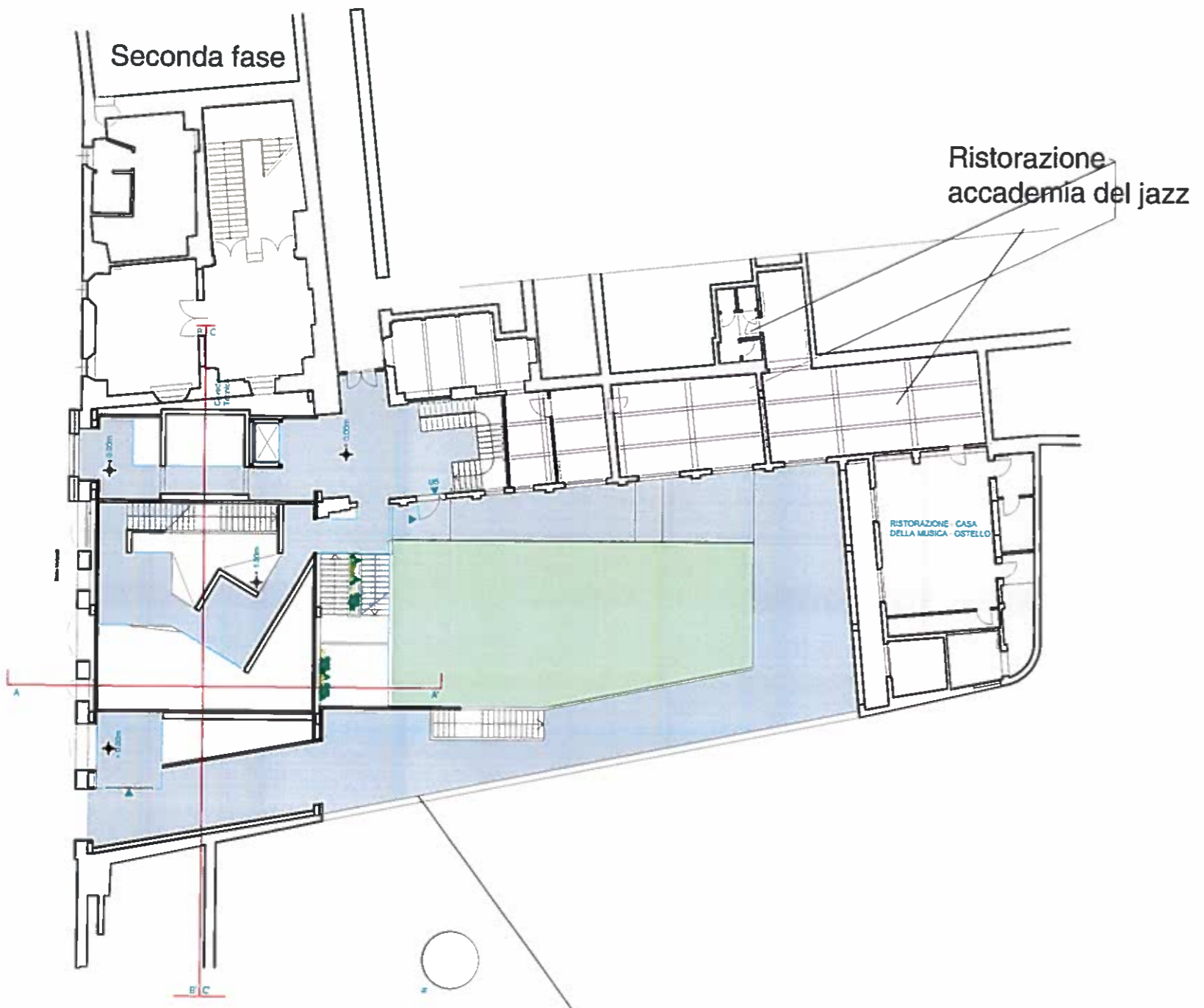


ITALO  
ROTA

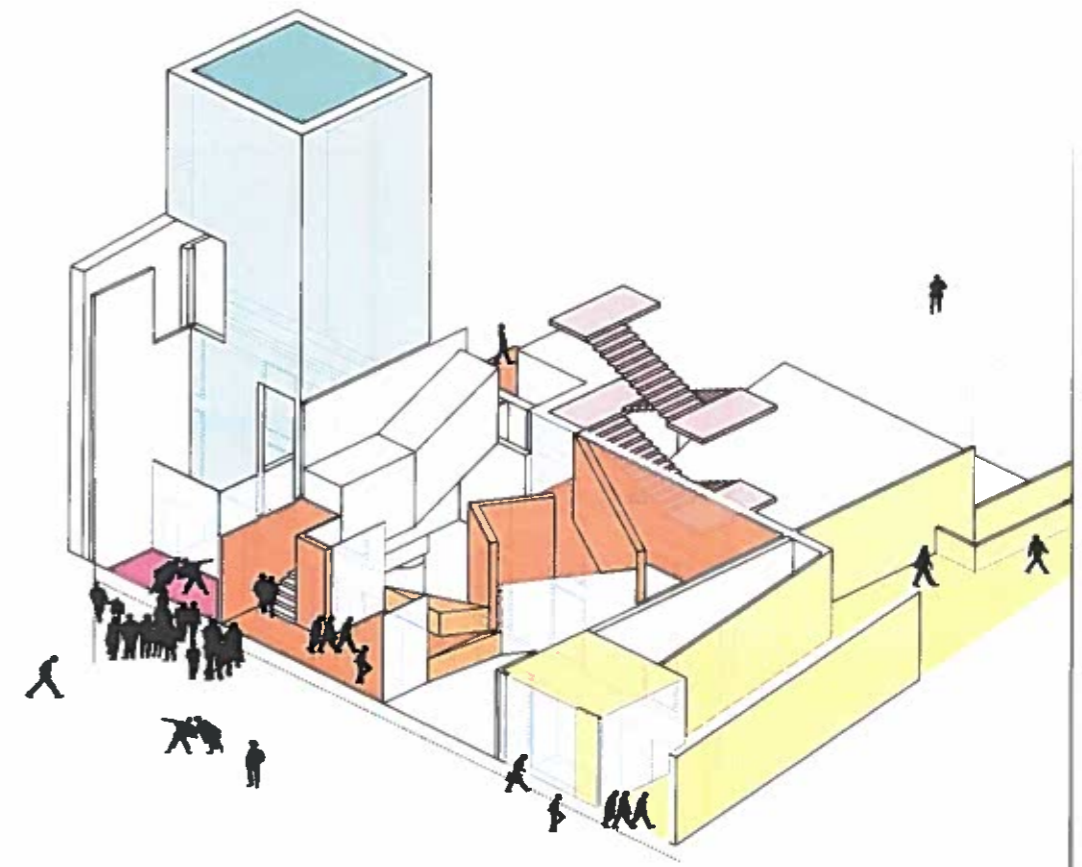


Copyright Theo Jansen





Cyclo parking

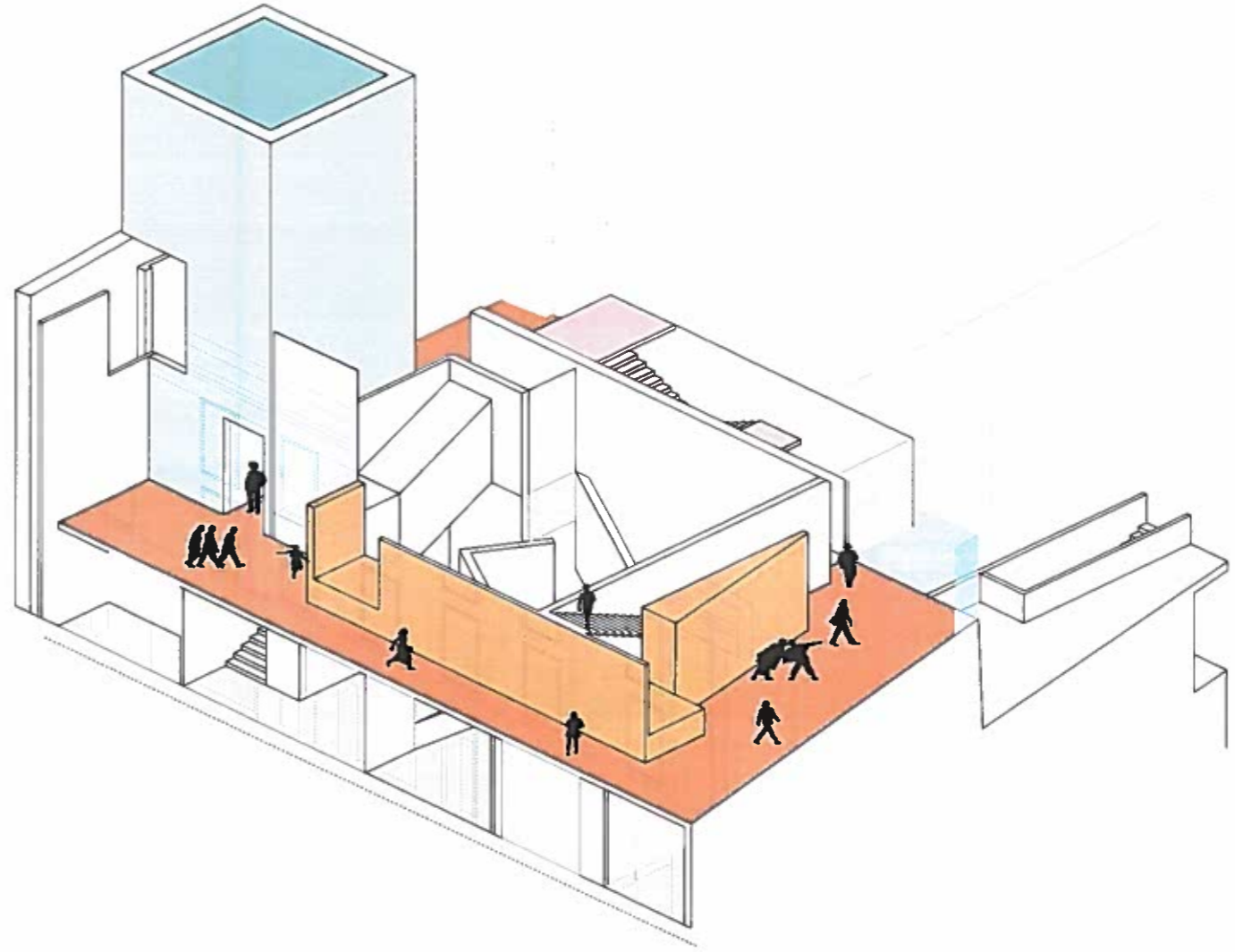


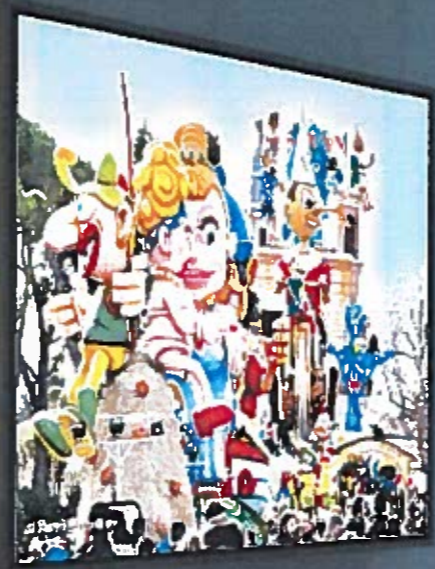
Corso Matteotti

Bookshop



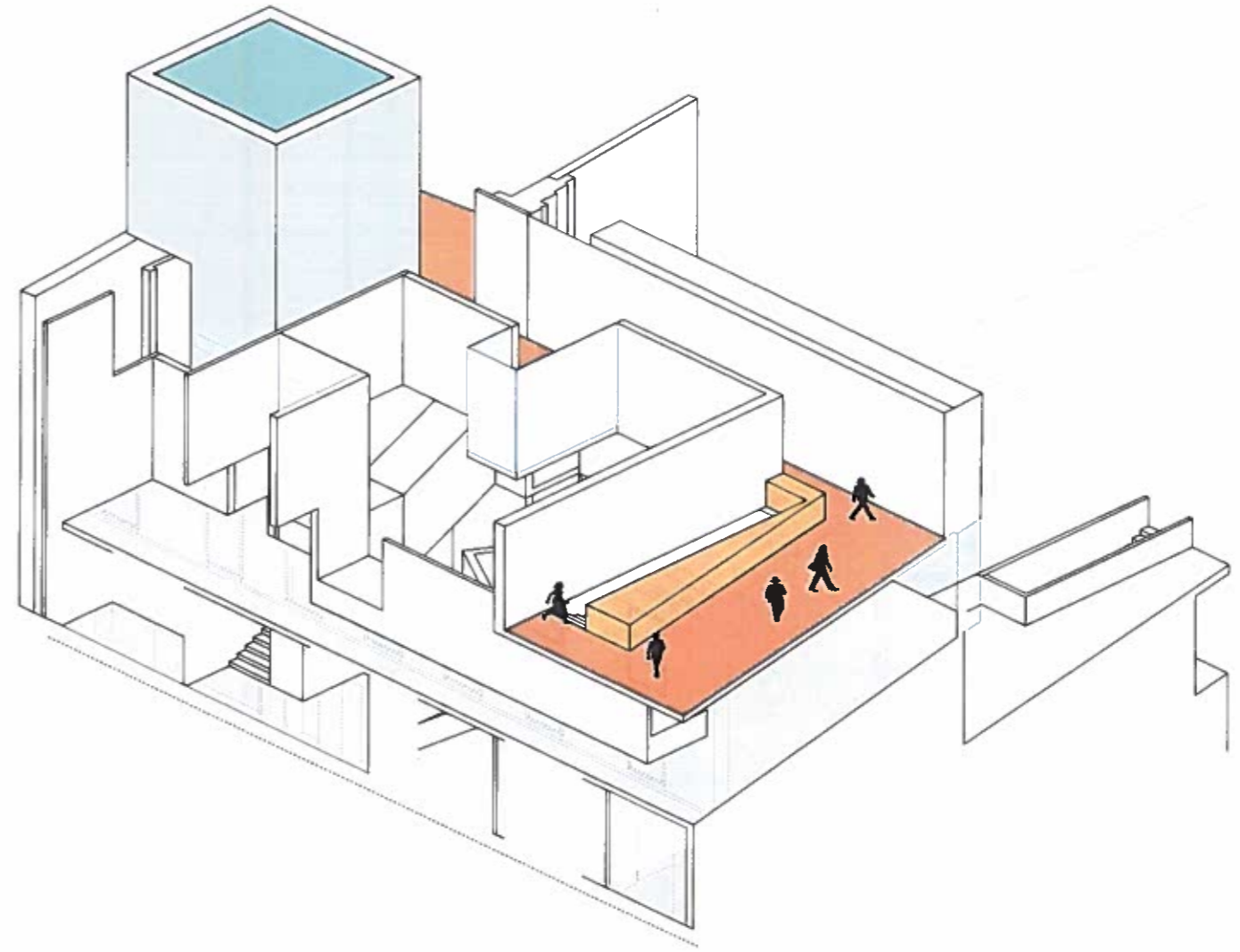




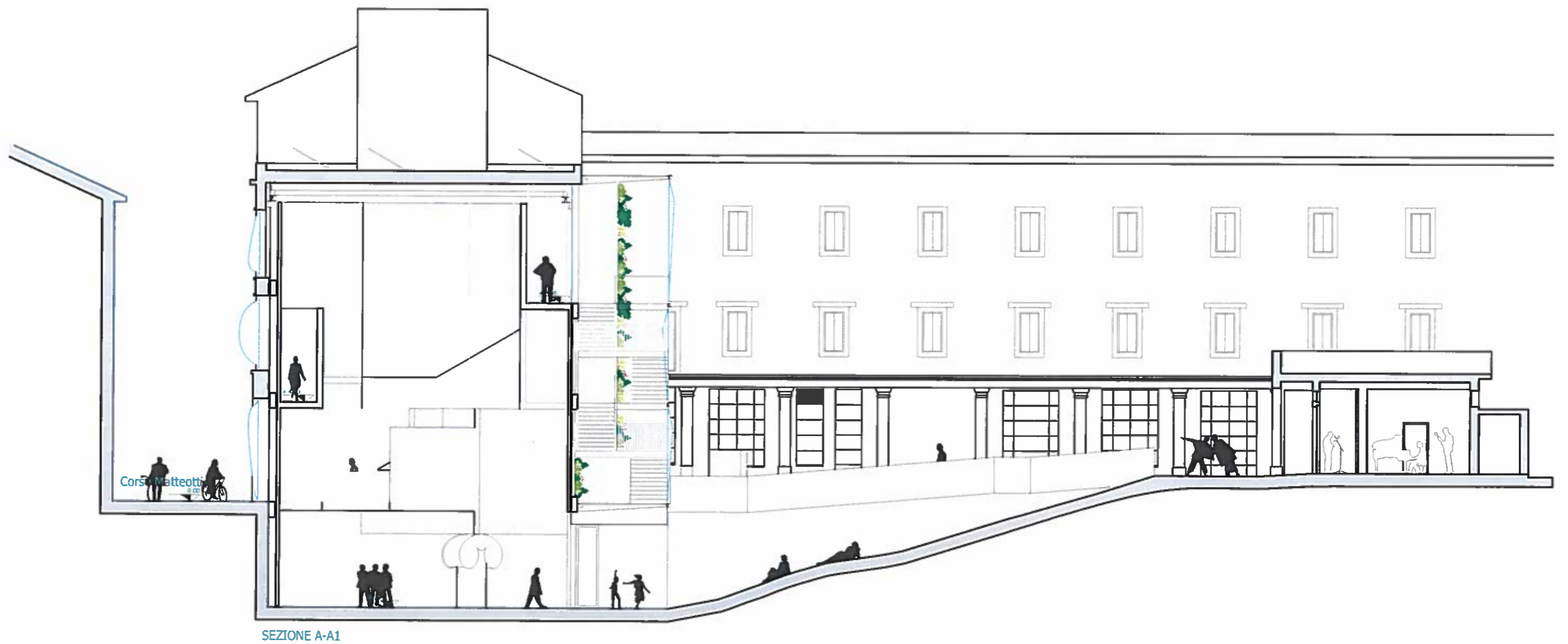




# Pianta e assonometria livello 2



# Sezione A-A1



GRAZIE A TUTTI

ITALO  
ROTA

