



Città di Fano

Settore IV Urbanistica

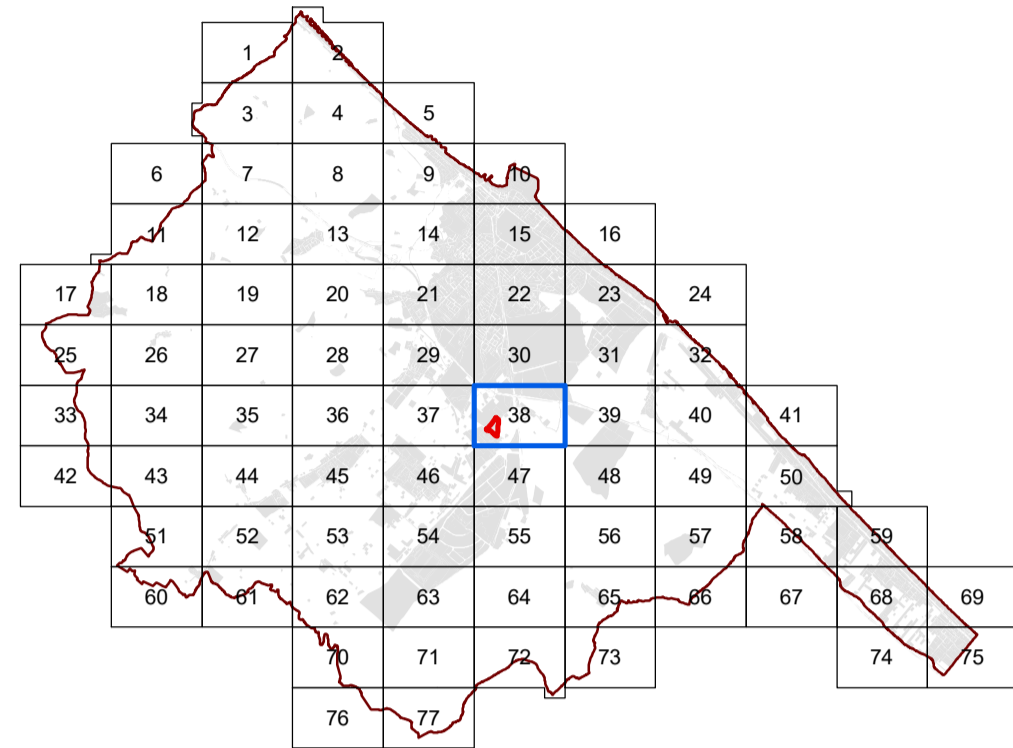
U.O. Pianificazione Urbanistica/Territoriale

PIANO REGOLATORE GENERALE

PROPOSTA DI VARIANTE

V262

V262 - VARIANTE URBANISTICA PER LA "REALIZZAZIONE DI UNA STRUTTURA SANITARIA IN UN'AREA DI PROPRIETA' COMUNALE IN LOCALITA' CHIARUCCIA"



TAV. 2
PROGETTAZIONE URBANISTICA DI DETTAGLIO
SCALA 1:500

Rif. Quadro di unione PRG in scala 1:2000

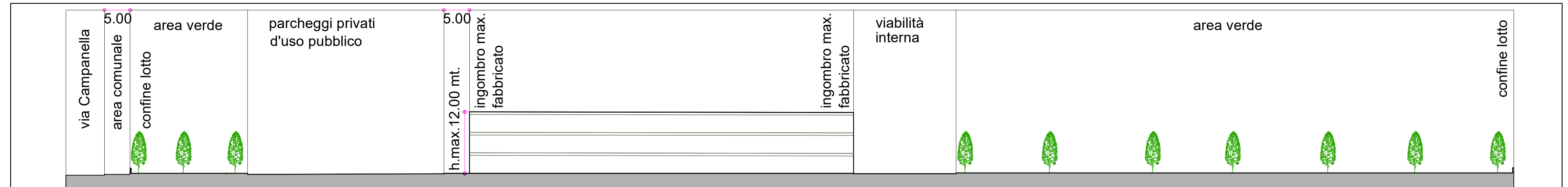
Novembre 2018



VARIANTE PROPOSTA - Progetto Urbanistico

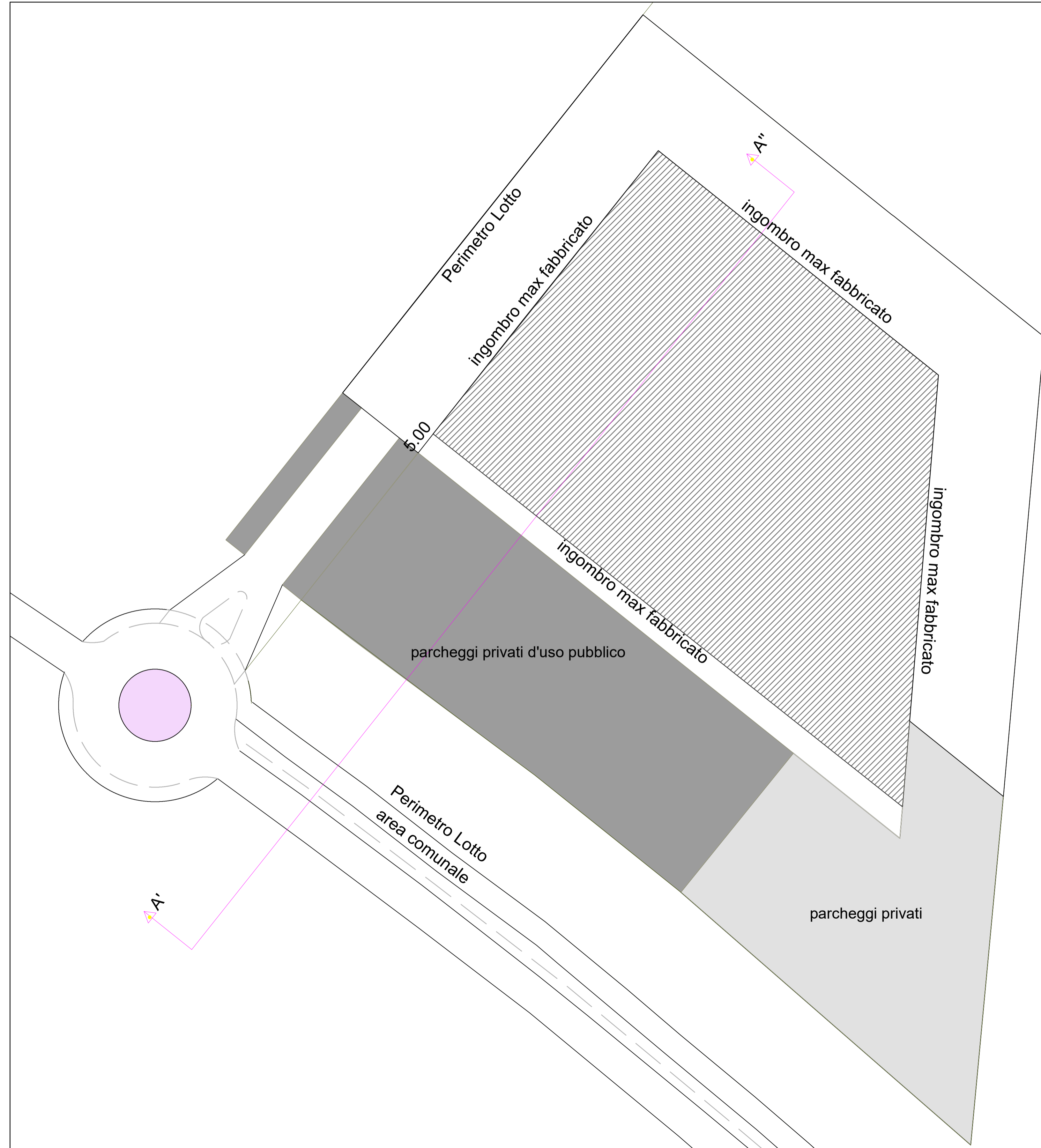
Area in variante

1:2.000



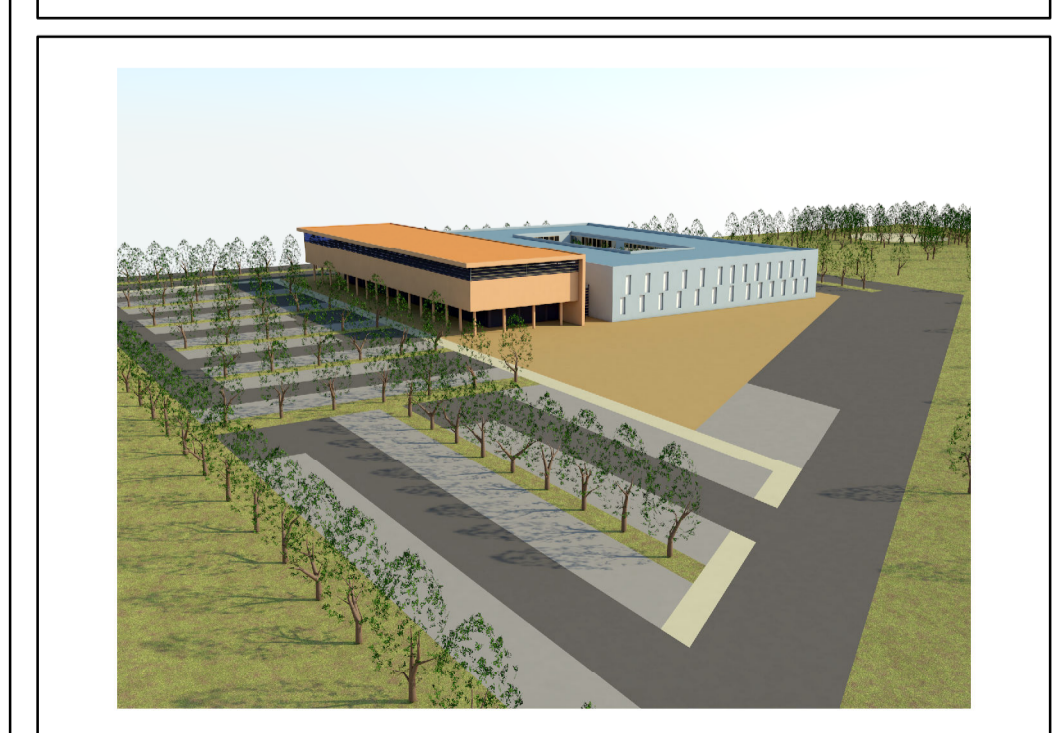
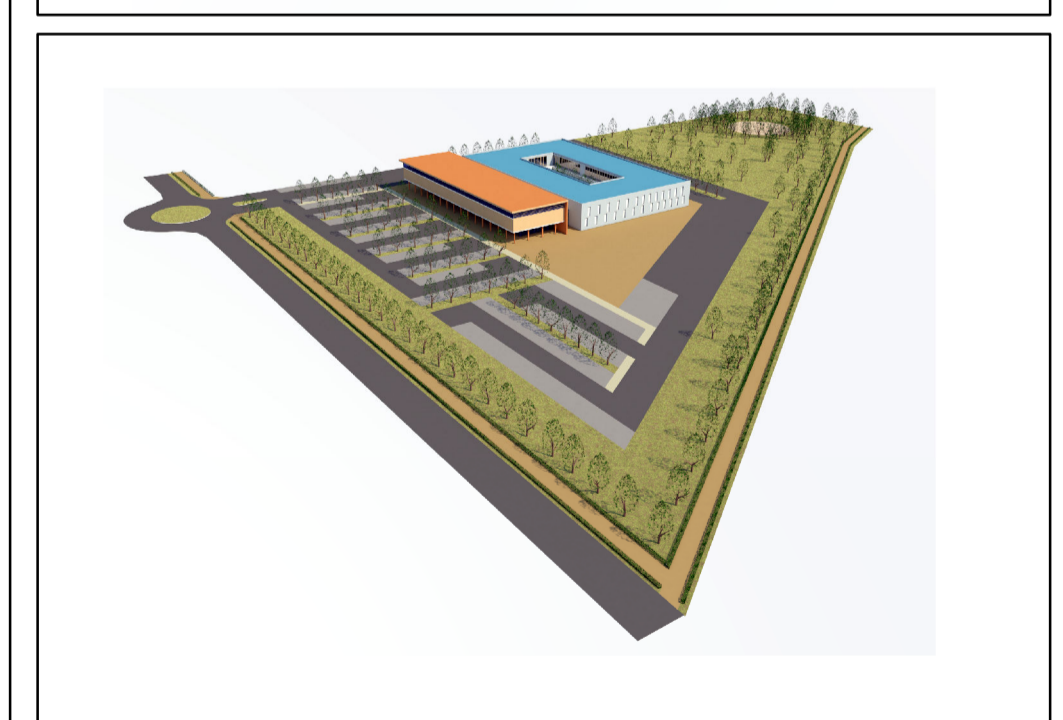
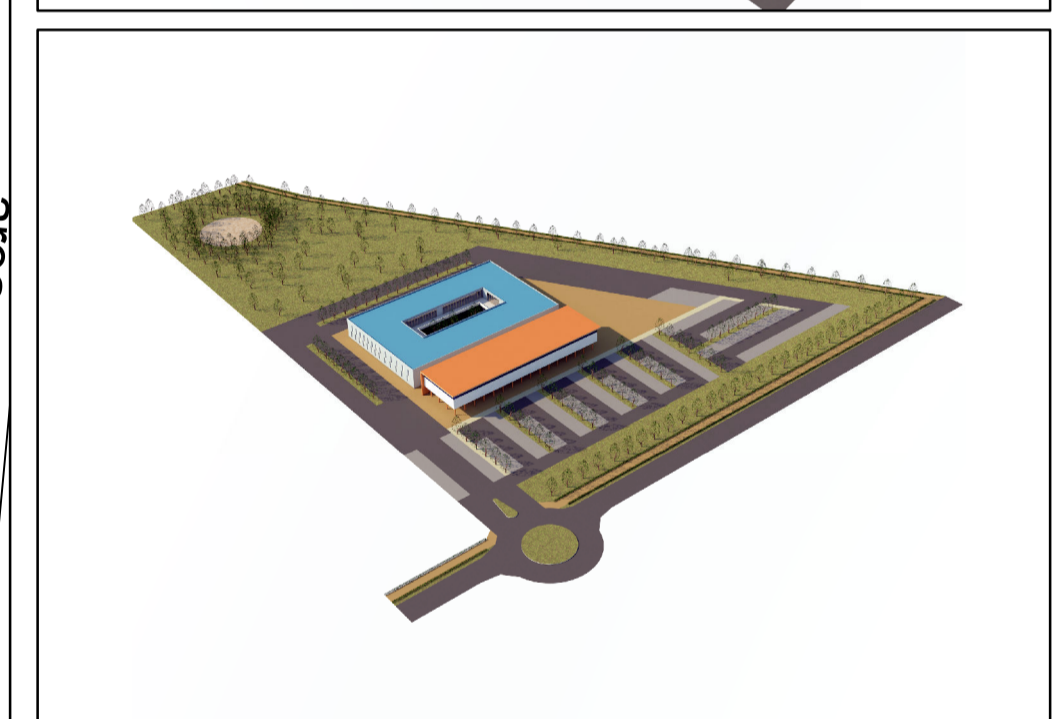
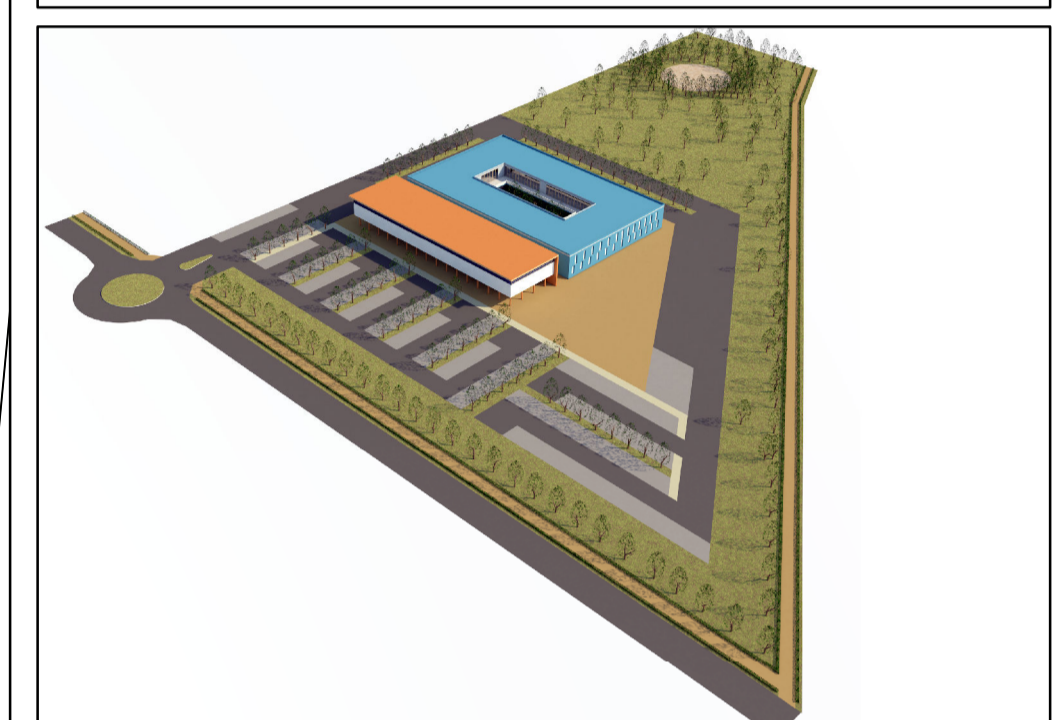
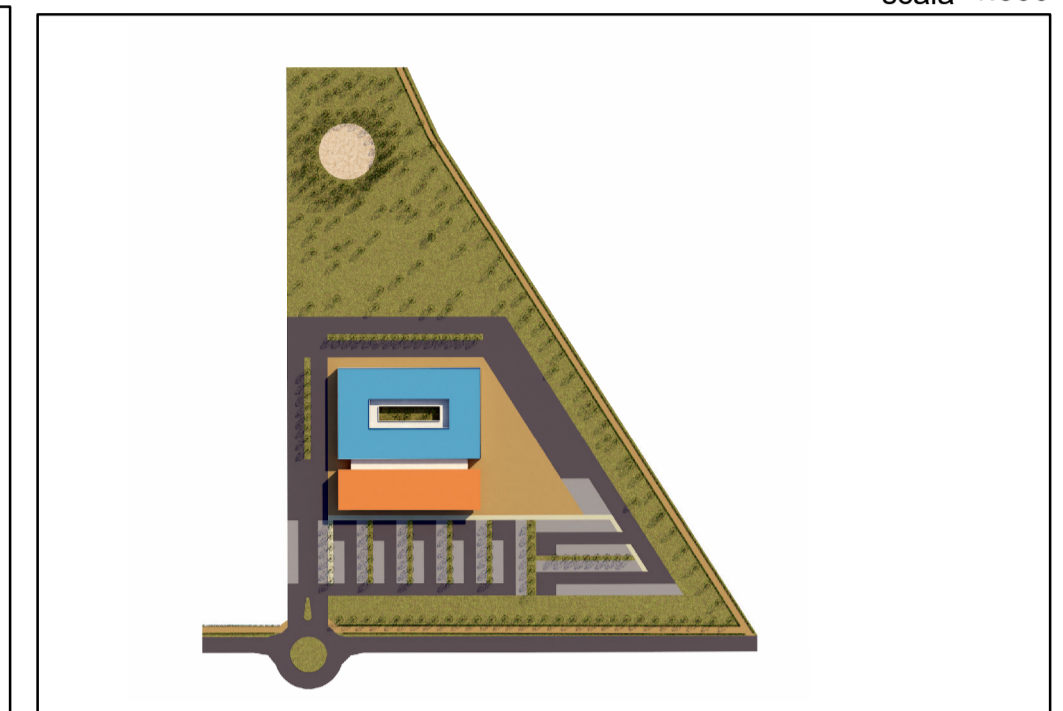
Profilo A - A

scala 1:500



Planimetria lotto

scala 1:500



Ipotesi volumetriche - indicative