



COMUNE DI FANO
Provincia di Pesaro Urbino

Settore Lavori Pubblici – U.O.C. Edifici Pubblici e Impianti Tecnologici

**LAVORI DI “RIQUALIFICAZIONE DEL PINCIO : GIARDINI,
BASTIONE DEL NUTI, PORTA MAGGIORE E VIE ADIACENTI”**

Progetto Esecutivo

DOCUMENTAZIONE FOTOGRAFICA

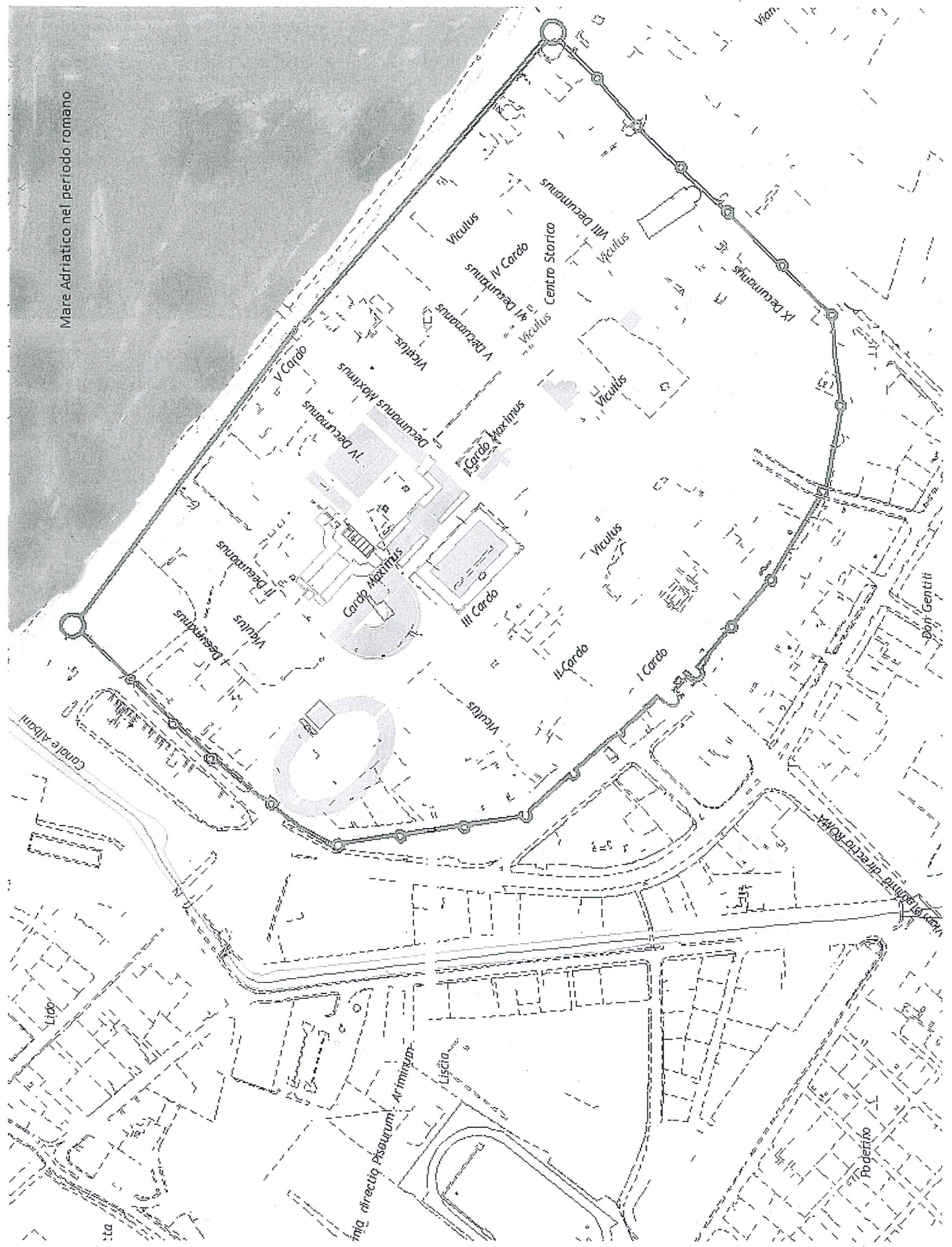
Responsabile del Procedimento
Dott. Arch. Elena De Vita



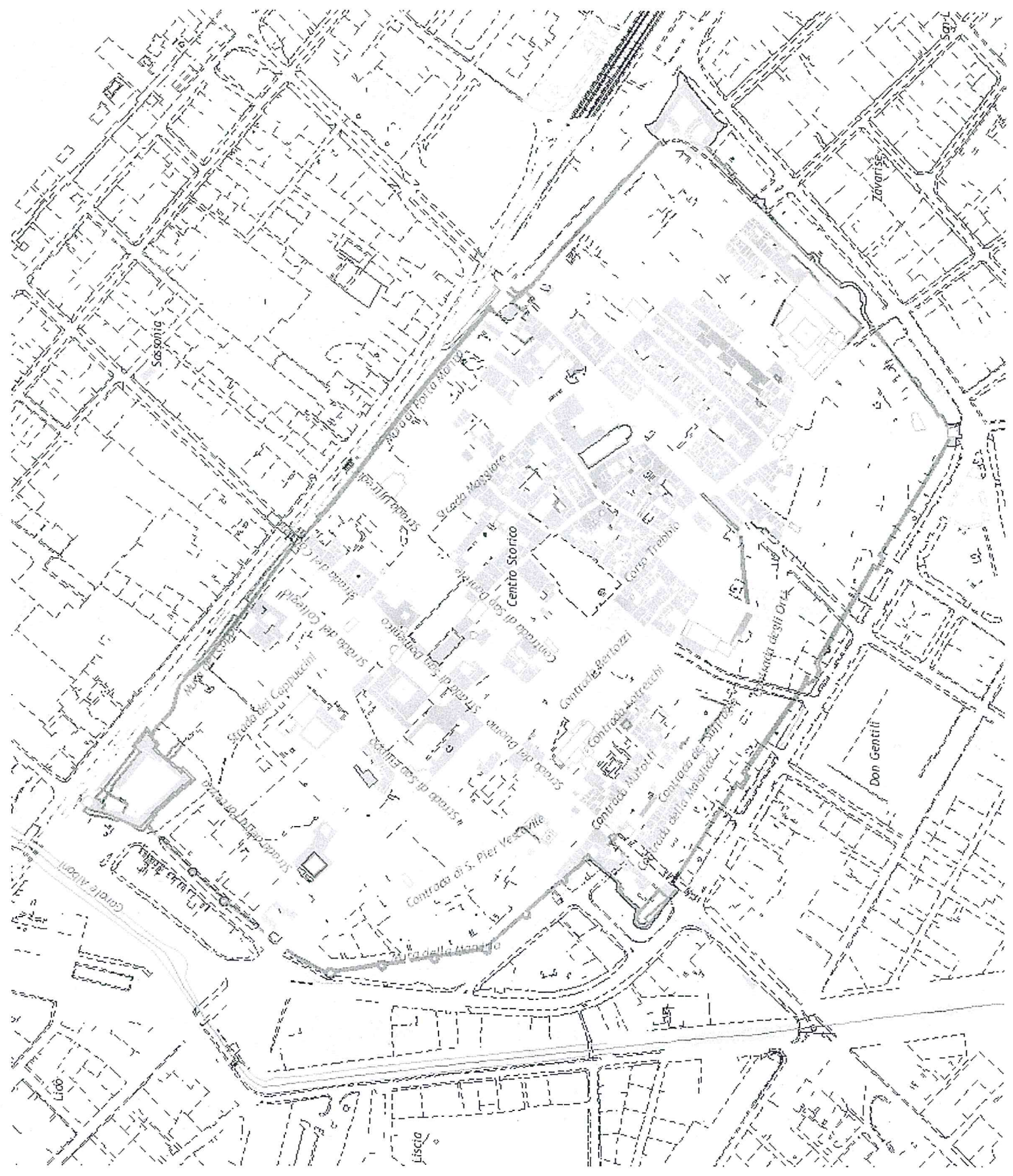
IL PROGETTISTA
Dott. Arch. Pamela Lisotta

dicembre 2017

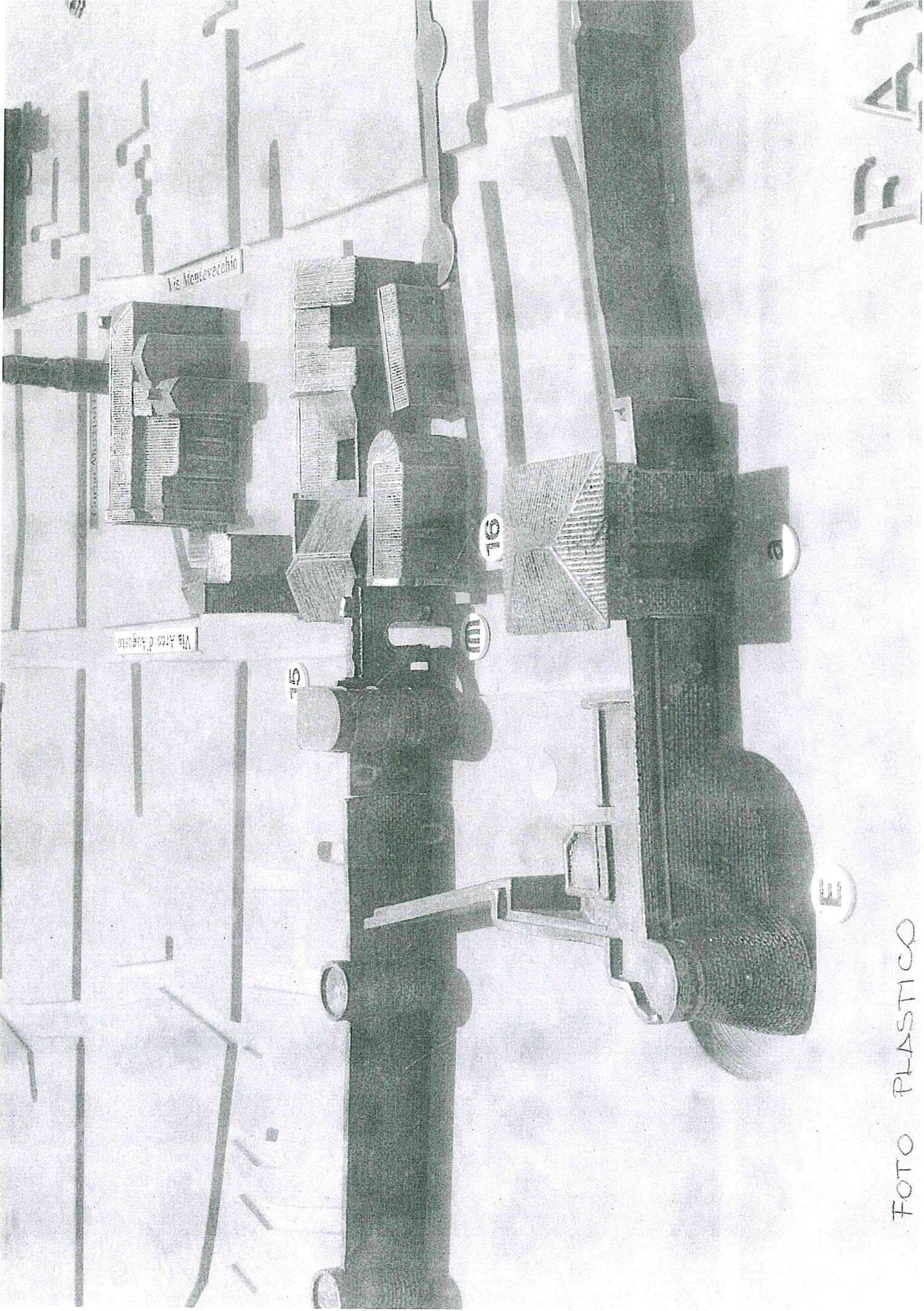
Mare Adriatico nel periodo romano



TAV. 1



TAV. 2



Via Menevecchio

Via Atco d'Augusto

16

16

16

E

FOTO PLASTICO

E A

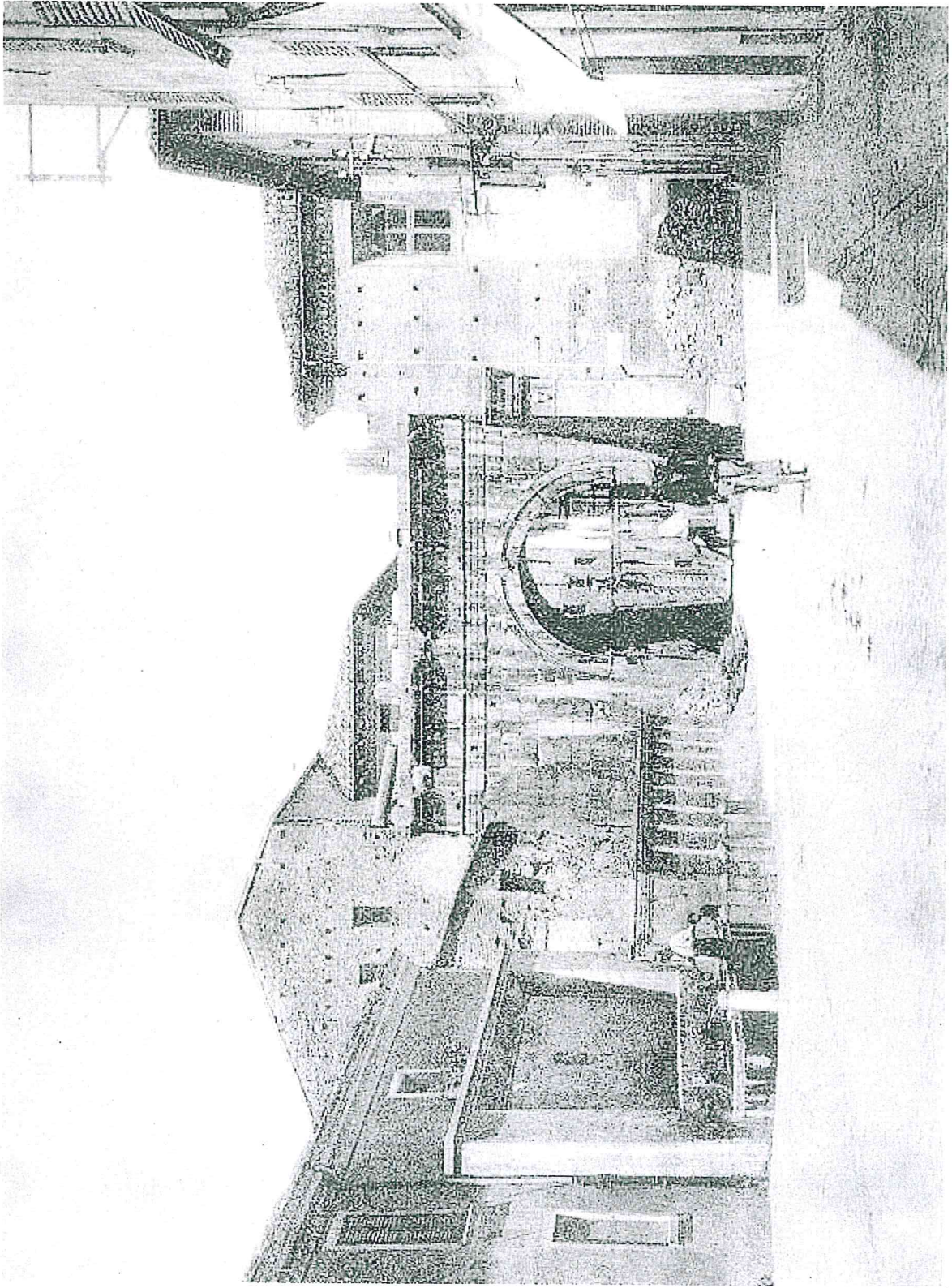
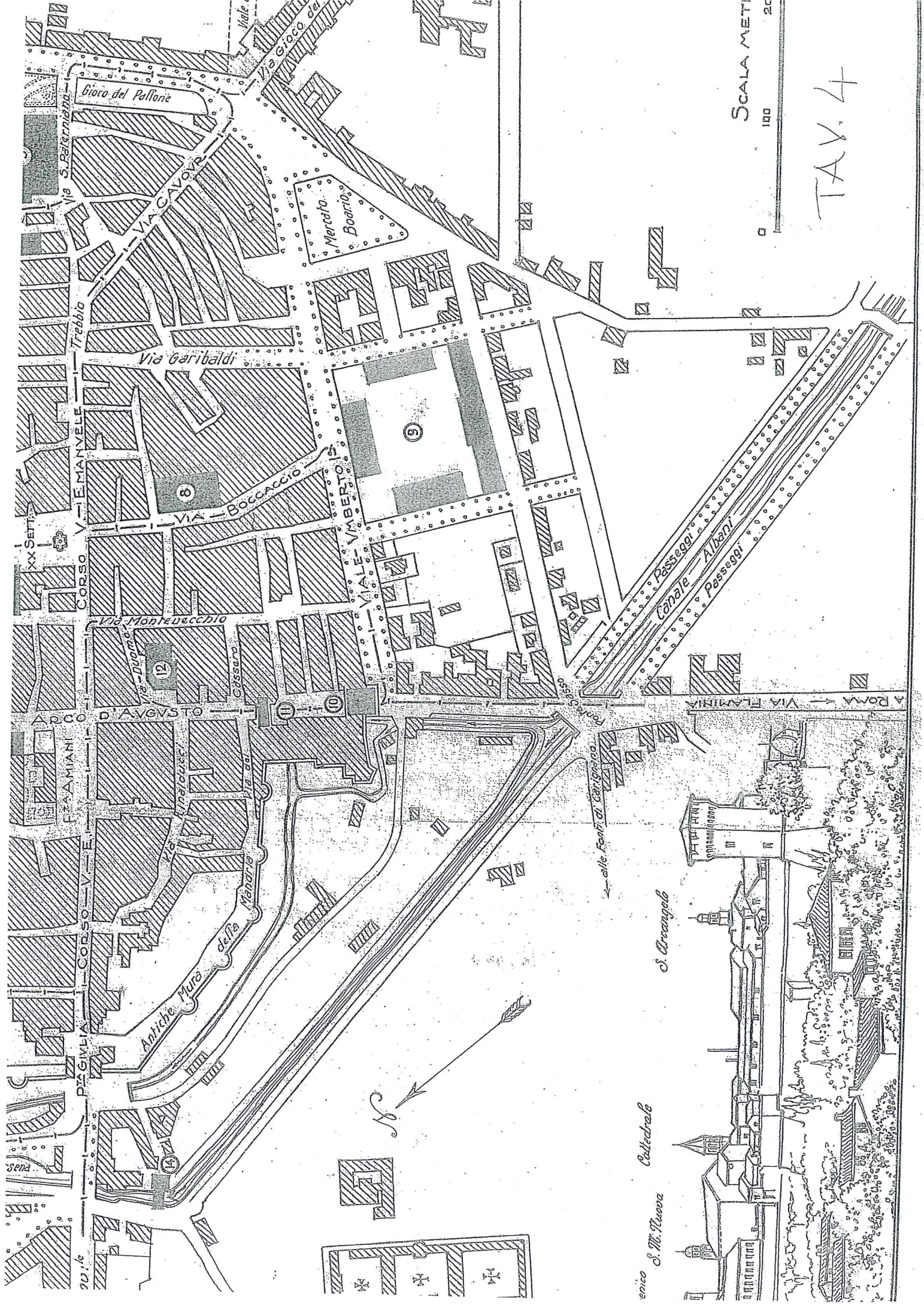


FOTO 1

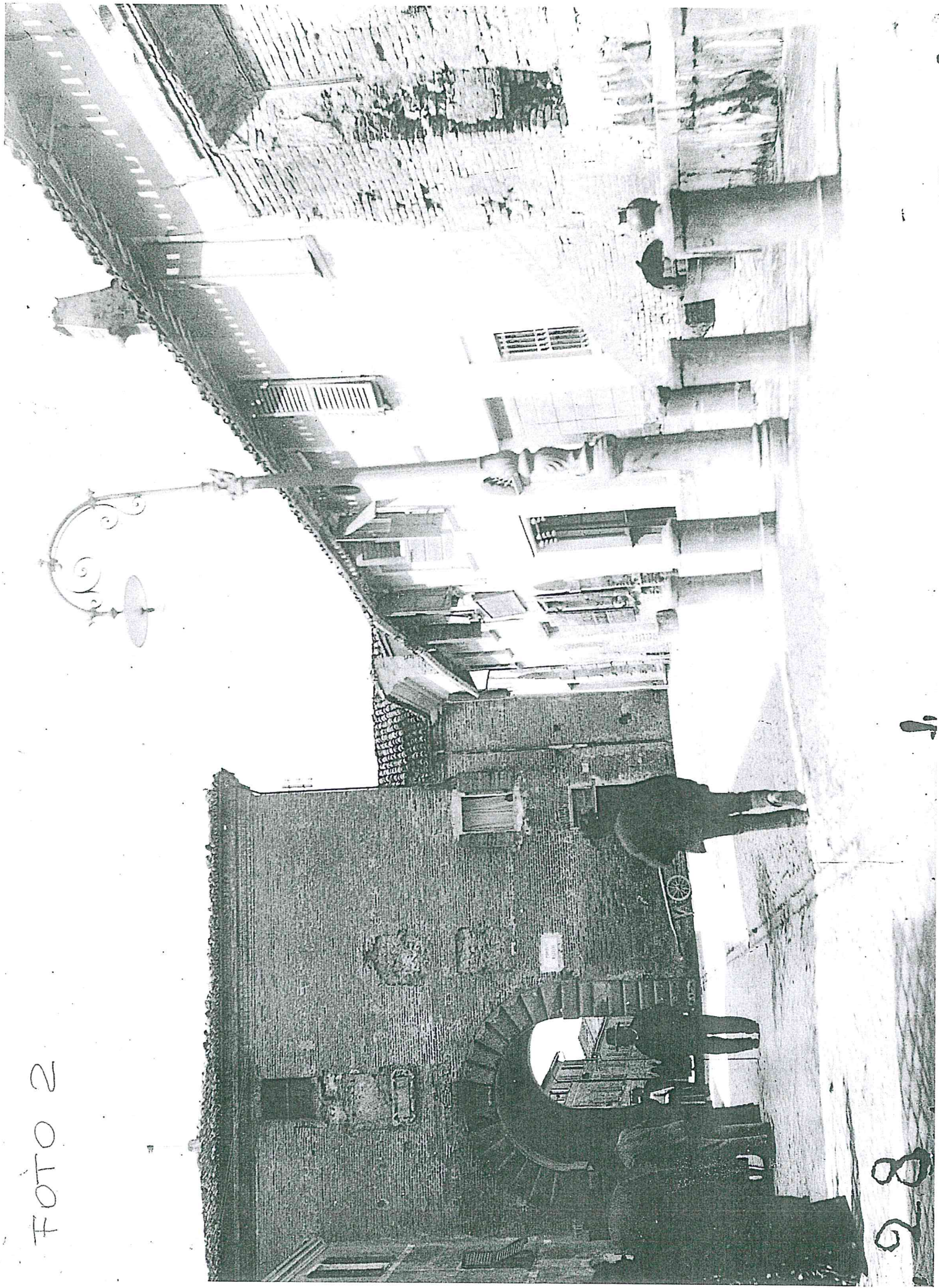


SCALA METI
0 100 200

TAV. 4

Via S. Petroniana
 Giovo del Pallone
 Via S. Giacomo del
 Viale
 Merlata
 Boarino
 Trebbia
 Via Garibaldi
 Via Emanuele
 XX Settembre
 Corso
 Via Boccazio
 Viale Umberto
 Via Monteuccidio
 Duomo
 Casazza
 Arco d'Augusto
 Piazza
 Corso V. E.
 Pignone
 Antiche Puro della
 Minore
 Fontana
 alle Fontane
 Genesio
 Fontana
 S. Orsola
 Basilica
 S. Maria Nuova
 Cattedrale
 Via Flaminia
 Passaggio
 Canale Albani
 Passaggio

FOTO 2



FOT.
3

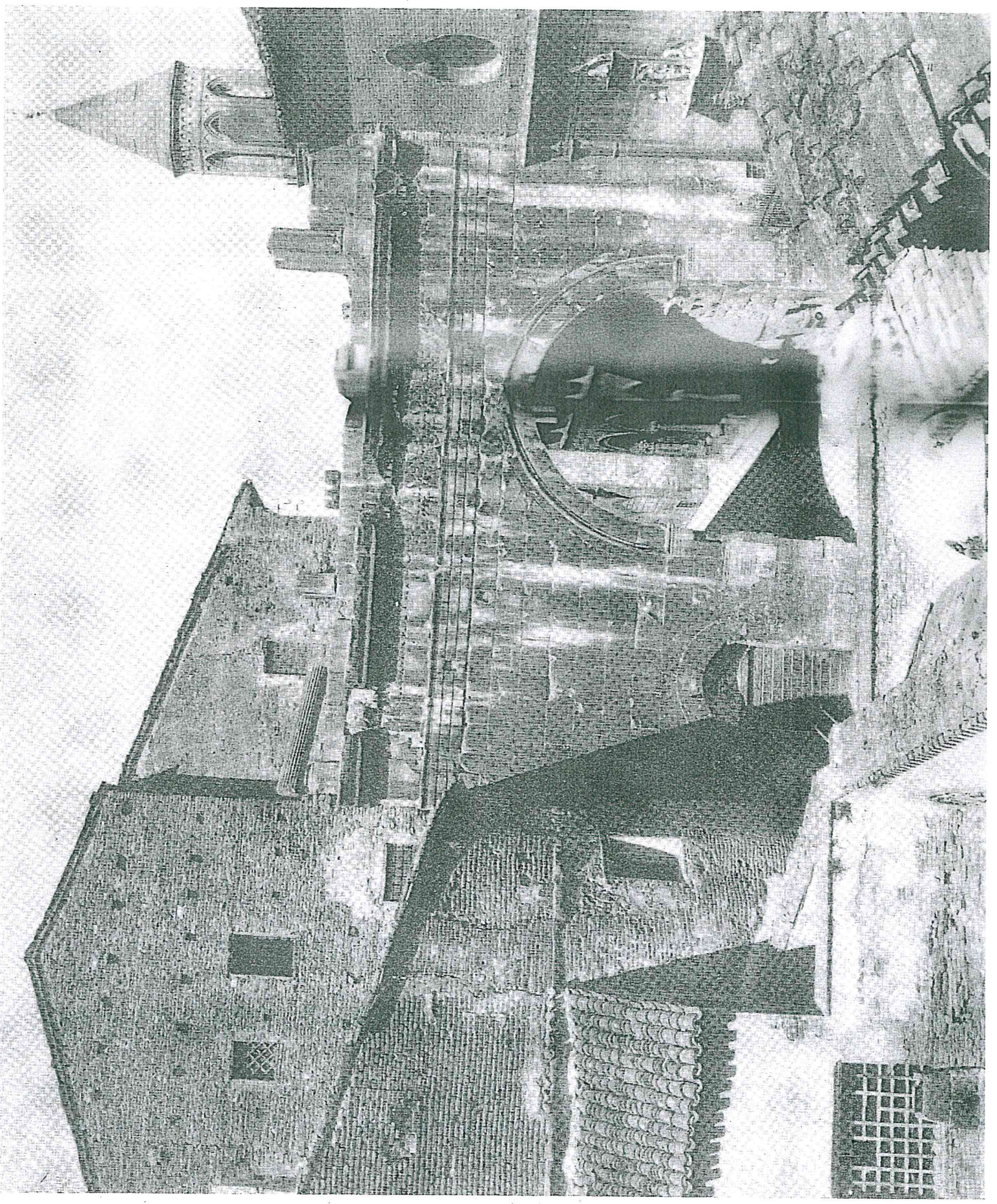


FOTO 4

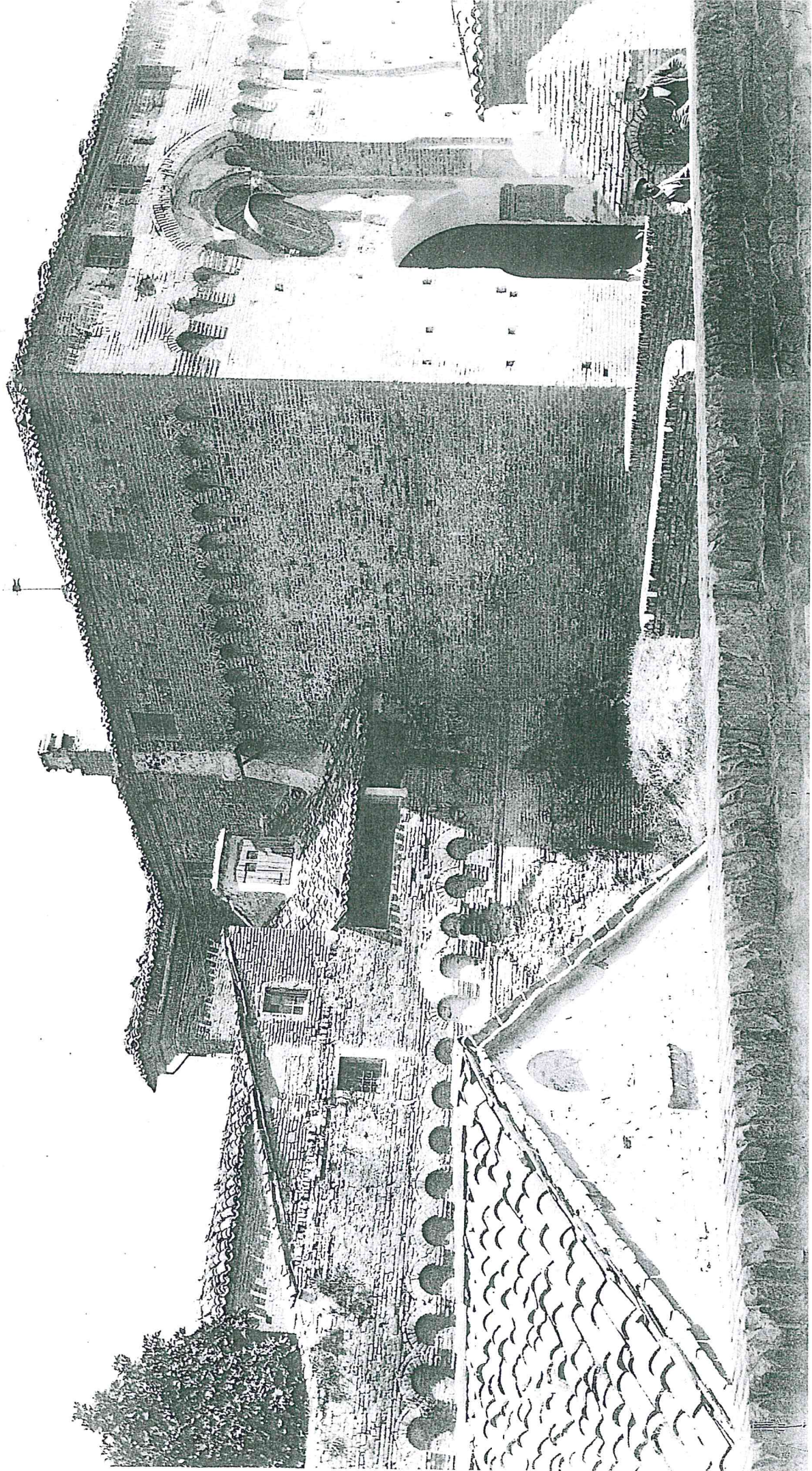
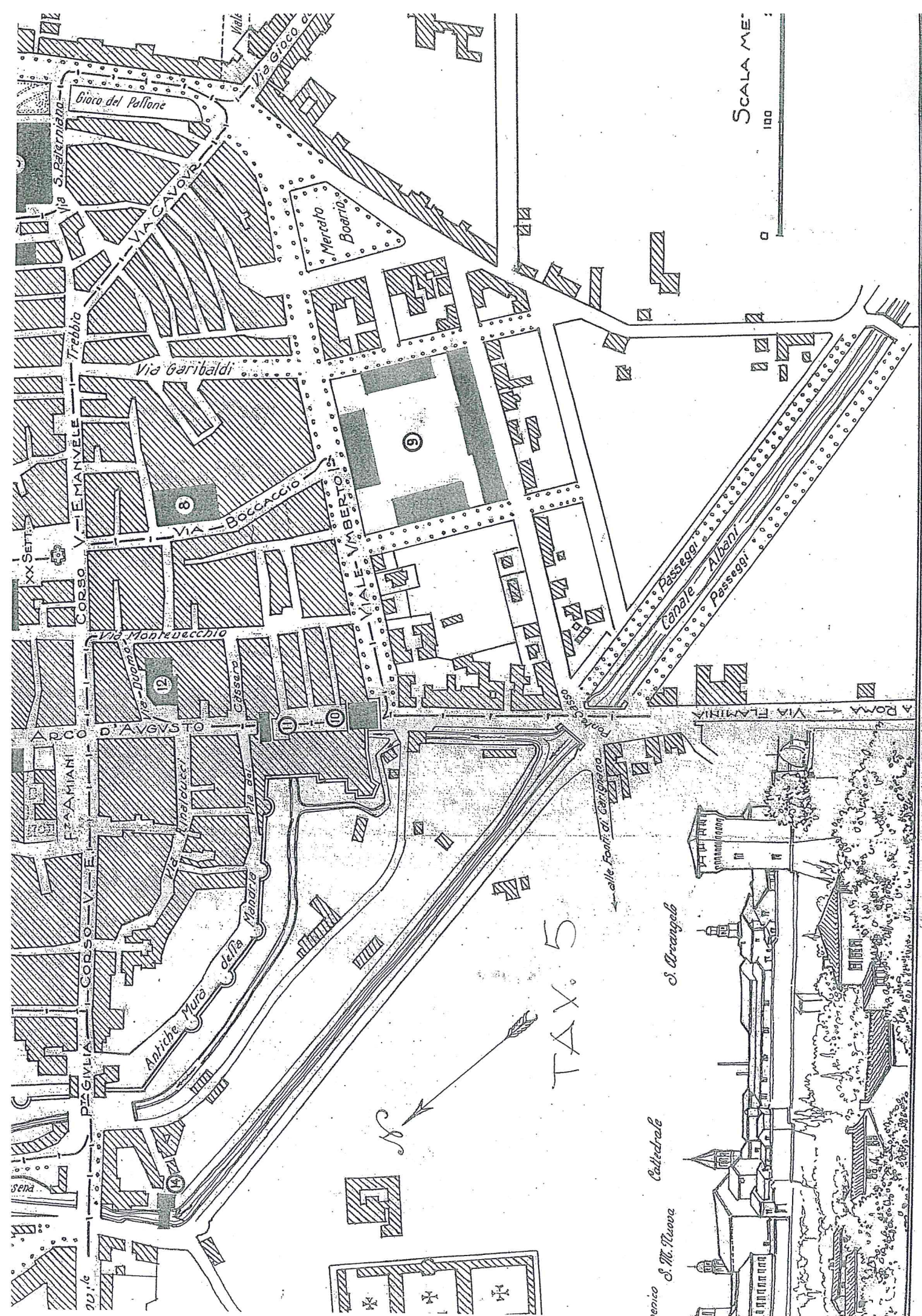


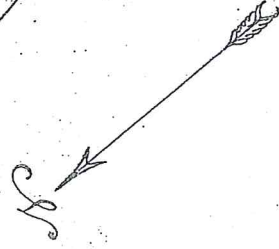


FOTO 5

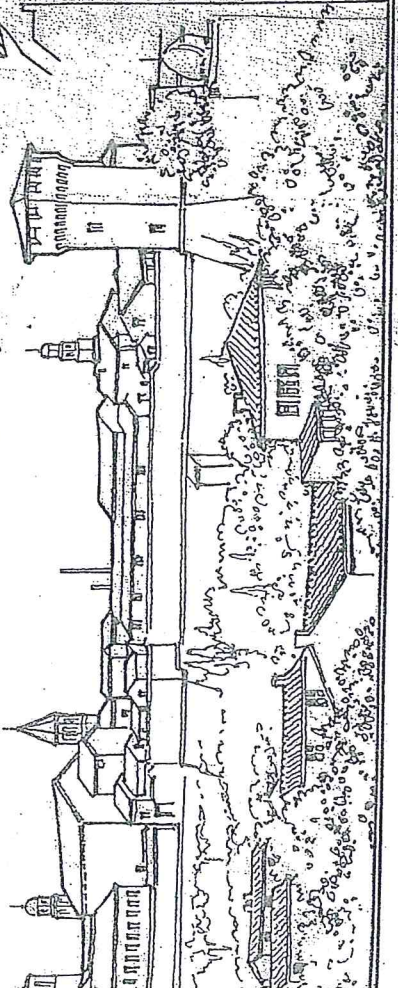


SCALA ME.
100

TAX. 5



Sanico S. M. Nuova
Cattedrale
S. Arancia



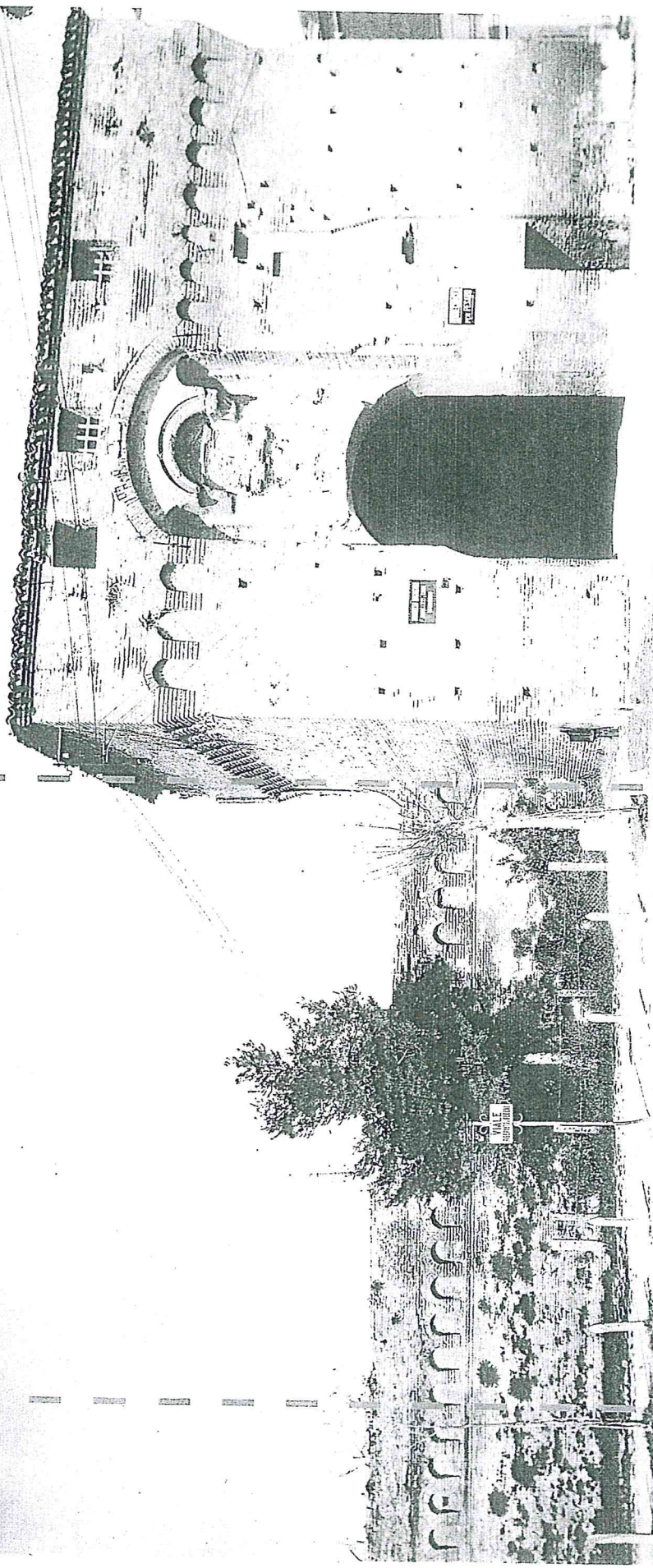
Labels on the map include: Via S. Paterniana, Gioco del Pallone, Via Gioio, Via Cavour, Mercato Boario, Trebbio, Via Garibaldi, Via Bocaccio, Via Emanuele, Corso, Via Montevucchio, Duomo, Cassero, Viale Umberto, Passaggi, Canale Albani, Passaggi, Via Flaminia, ARCO D'AVENSTO, PIAZZA F. AMIANI, CORSO V. E., Aniche Muro della Manara, Font. S. Gennaro, and Font. S. Gennaro.



28

FMTM 6

PARTE DI CORTINA MURARIA DEMOLITA



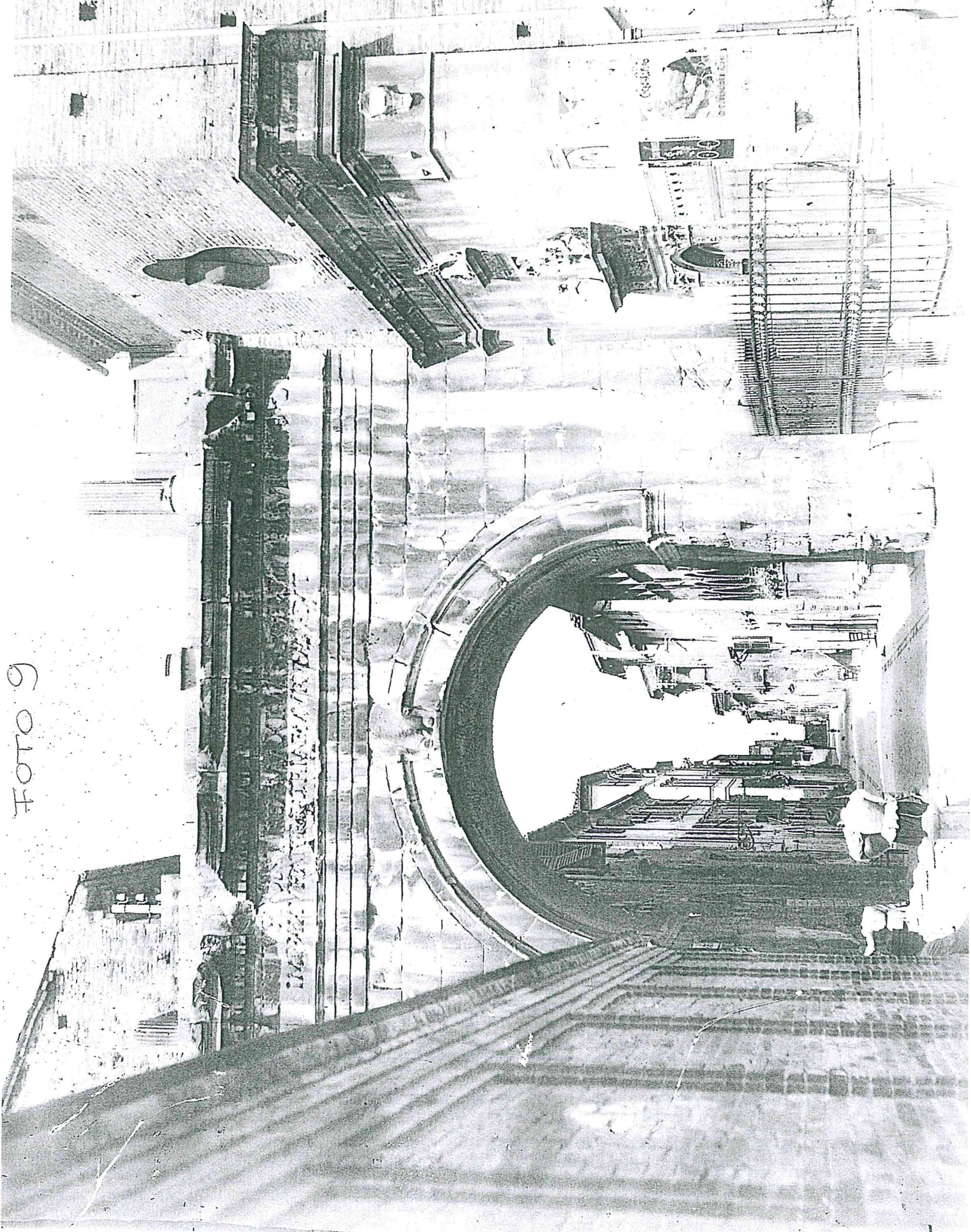
23

FOTO 7: PORTA MAGGIORE 1930 CIRCA



FOTO 8

FOTO 9



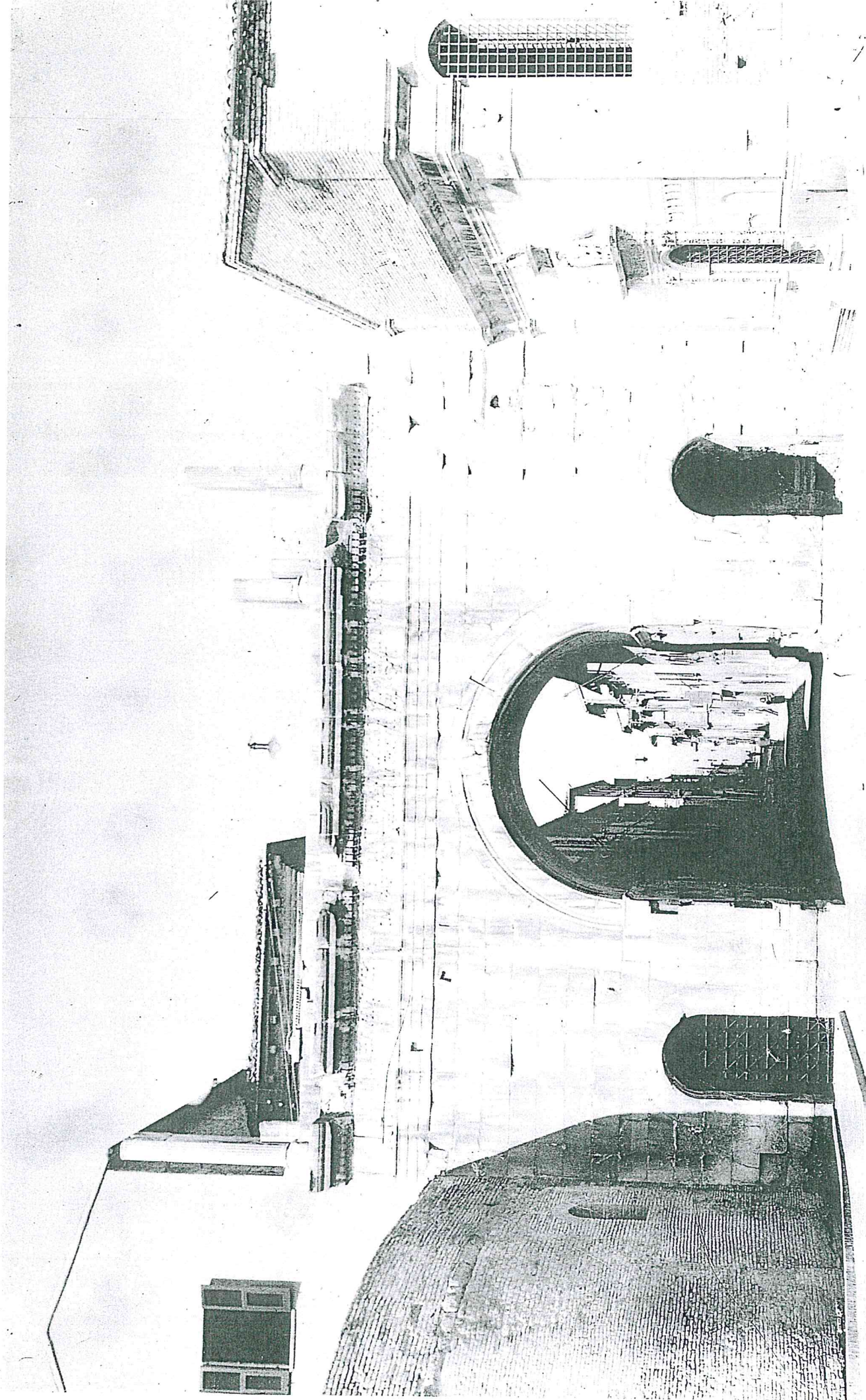


FOTO 10

63

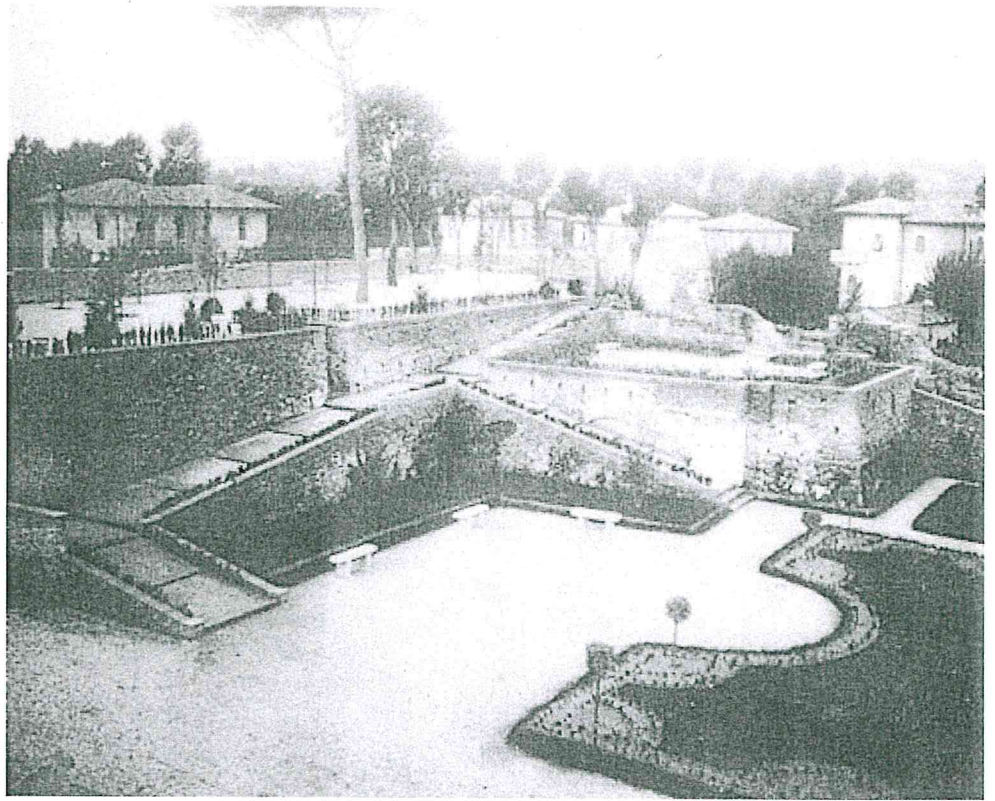


FOTO 11



FOTO 12

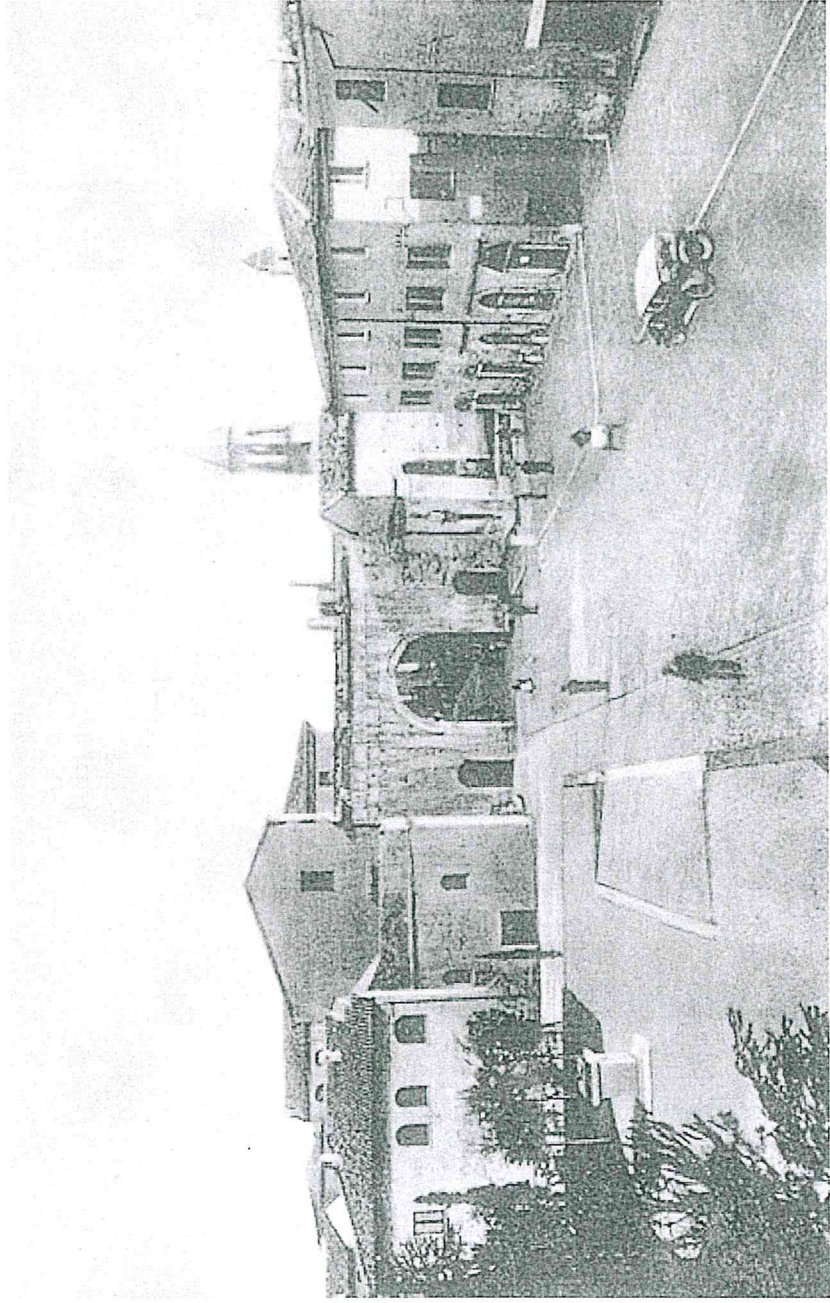


FOTO 13